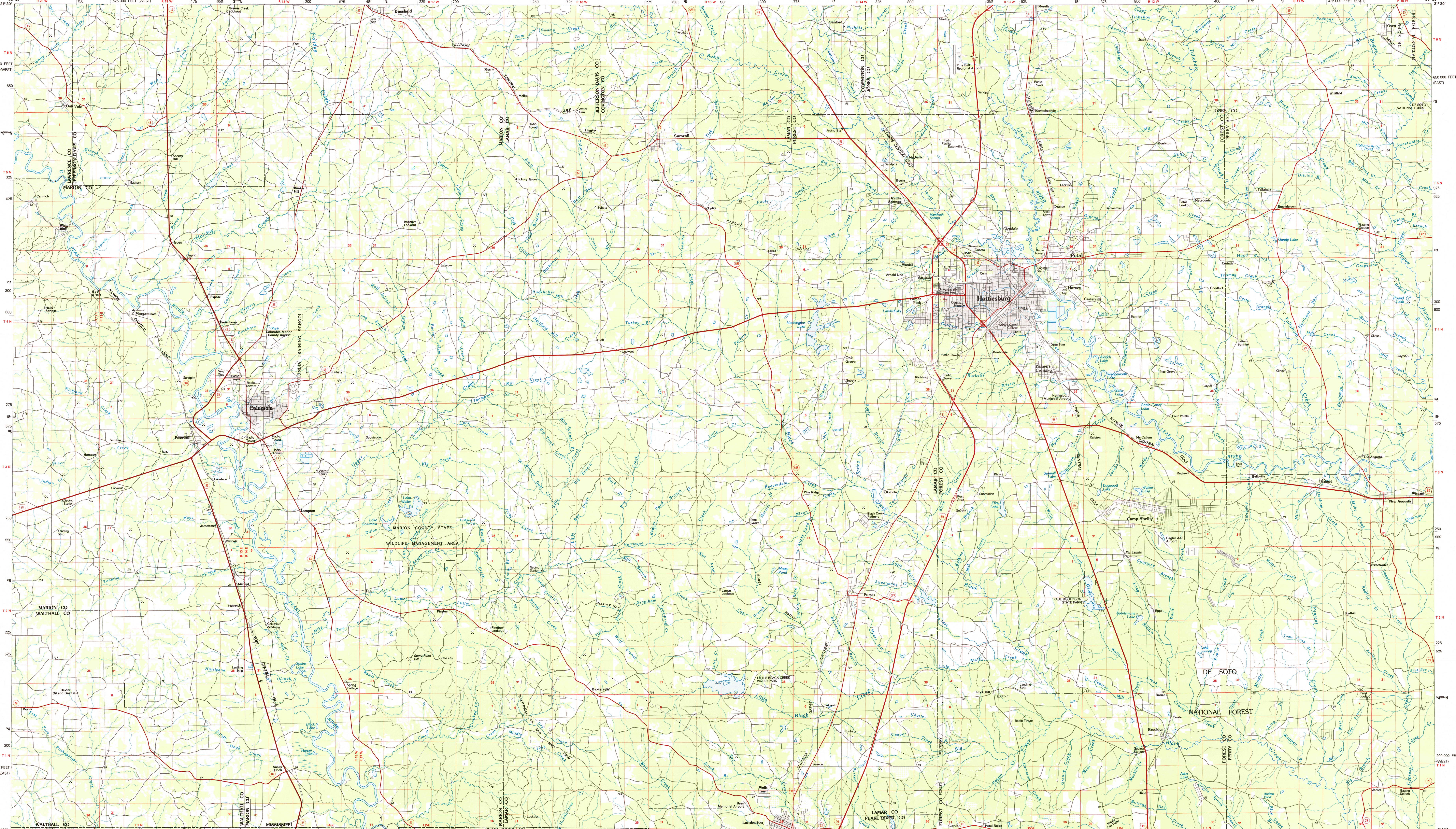


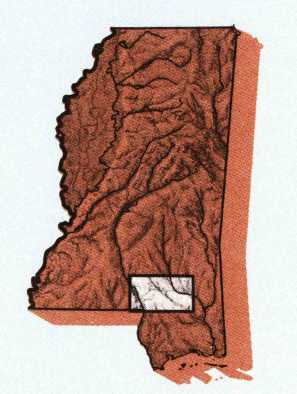
HATTIESBURG, MISSISSIPPI-LOUISIANA

30 X 60 MINUTE SERIES (PLANIMETRIC)



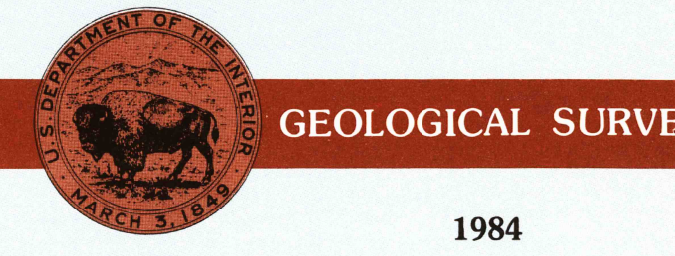
Hattiesburg MISSISSIPPI-LOUISIANA

1:100 000-scale planimetric map



30 X 60 MINUTE QUADRANGLE SHOWING

- Elevations in meters
- Highways, roads and other manmade structures
- Water features
- Woodland areas
- Geographic names



1984

Produced by the United States Geological Survey  
 Compiled from USGS 1:24 000-scale topographic maps dated 1963-1983. Planimetry revised from aerial photographs taken 1968-81 and other source data. Revised information not field checked. Map edited 1984.  
 Projection and 10 000-meter grid, zone 15, Universal Transverse Mercator  
 25 000-foot grid ticks based on Mississippi coordinate system, east and west zones  
 1927 North American Datum  
 To place on the predicted North American Datum 1983 move the projection lines 16 meters south and 6 meters east  
 There may be private inholdings within the boundaries of the National or State reservations shown on this map

NATIONAL GEODETIC VERTICAL DATUM OF 1929  
 ELEVATIONS SHOWN TO THE NEAREST METER

THIS MAP COMPLES WITH NATIONAL MAP ACCURACY STANDARDS

CONVERSION TABLE		DECLINATION DIAGRAM		ADJOINING MAPS		
Meters	Feet	Magnetic Declination		1	2	3
1	3.2808	1° 00' 00" N		4	1	5
2	6.5616	1° 00' 00" E		6	7	8
3	9.8424	1° 00' 00" S		1 Brookhaven		
4	13.1232	1° 00' 00" W		2 Laurel		
5	16.4040	1° 00' 00" E		3 Waynesboro		
6	19.6848	1° 00' 00" S		4 McComb		
7	22.9656	1° 00' 00" W		5 Clarksdale		
8	26.2464	1° 00' 00" E		6 Amite		
9	29.5272	1° 00' 00" S		7 Bogalusa		
10	32.8080	1° 00' 00" W		8 Mobile		

To convert meters to feet multiply by 3.2808  
 To convert feet to meters multiply by 0.3048

UTM grid convergence (GM) and true magnetic declination (MD) at center of map. Diagram is approximate.

FOR SALE BY U.S. GEOLOGICAL SURVEY, DENVER, COLORADO 80225  
 OR RESTON, VIRGINIA 22092

Topographic Map Symbols

- Primary highway, hard surface
- Secondary highway, hard surface
- Light duty road, principal street, hard or improved surface
- Other road or street, trail
- Railroad: standard gauge, narrow gauge
- Bridge, overpass, underpass
- Tunnel: road, railroad
- Ball up area, locality, elevation
- Archer, landing field, landing strip
- National boundary
- State boundary
- County boundary
- Nation or State reservation boundary
- Land grant boundary
- U.S. public lands survey: range, township; section
- Range, township; section line: protracted
- Power transmission line, pipeline
- Dam, dam with lock
- Cemetery, building
- Windmill, water well, spring
- Mine shaft, adit or cave, mine, quarry, gravel pit
- Campground, picnic area, U.S. location monument
- Ruin, old dwelling
- Disturbed surface: strip mine, lava, sand
- Contours: index, intermediate, supplementary
- Bathymetric contours: index, intermediate
- Stream, lake: perennial, intermittent
- Rapids, weir and small falls, large and small
- Area to be submerged: marsh, swamp
- Land subject to controlled inundation: woodland
- Scrub, mangrove
- Orchard, vineyard

A pamphlet describing topographic maps is available on request

SCALE 1:100 000  
 1 CENTIMETER ON THE MAP REPRESENTS 1 KILOMETER ON THE GROUND

KILOMETERS 0 1 2 3 4 5 6 7 8 9 10 11 12 13 14 15 16 17 18 19 20  
 MILES 0 1 2 3 4 5 6 7 8 9 10 11 12 13

200 000 FEET  
 1:100 000

HATTIESBURG, MISSISSIPPI-LOUISIANA  
 31089-A1-PL-100  
 1984

RETURN TO:  
 USGS AND HISTORICAL MAP ARCHIVES