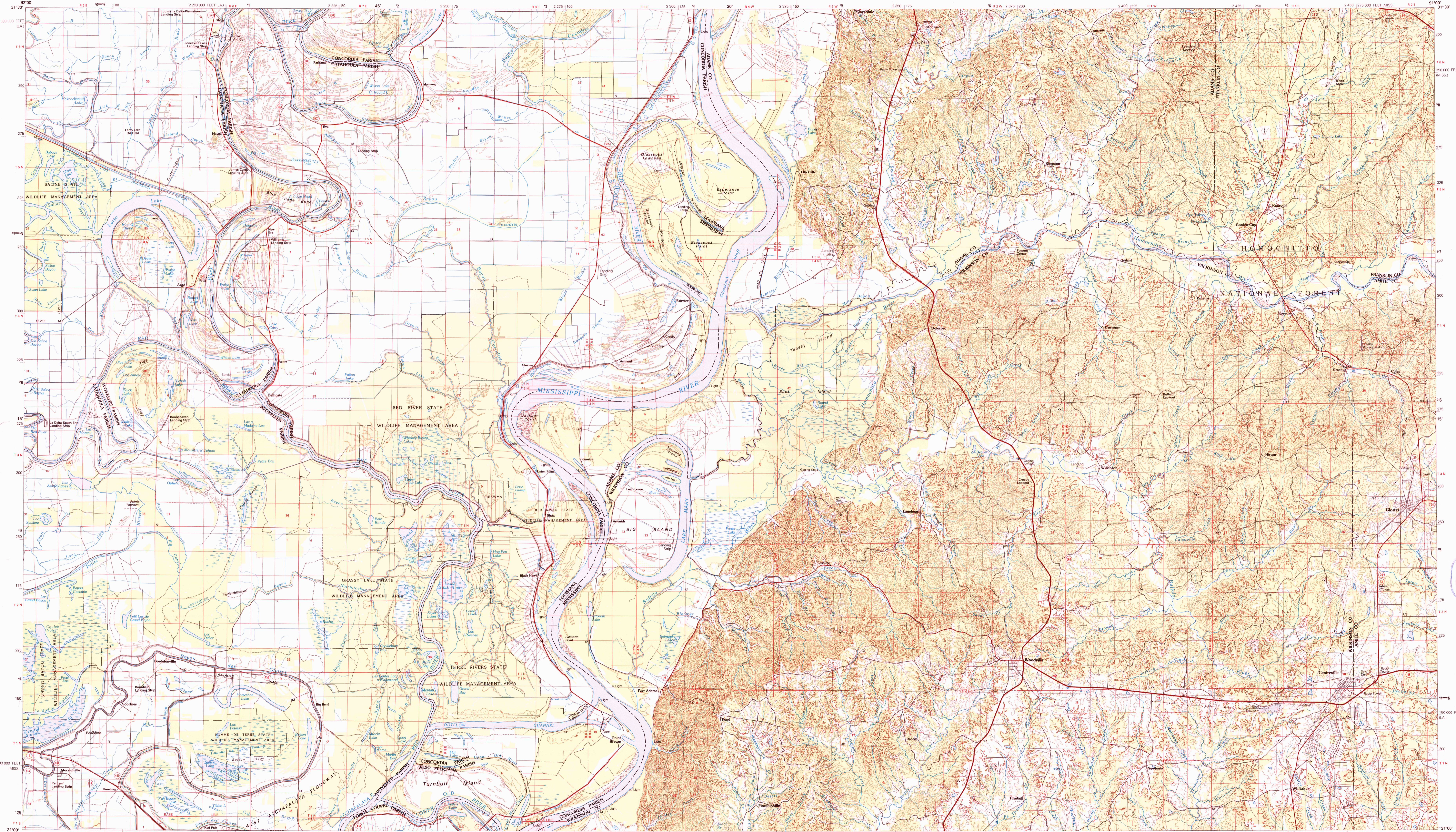


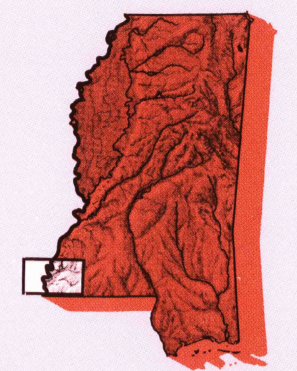
WOODVILLE, MISSISSIPPI-LOUISIANA

30 X 60 MINUTE SERIES (TOPOGRAPHIC)



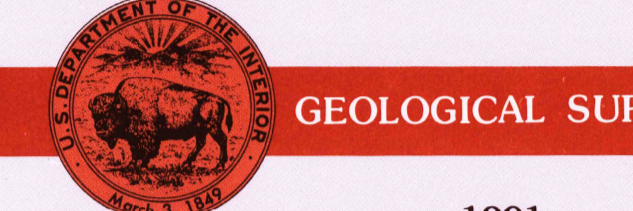
Woodville MISSISSIPPI-LOUISIANA

1:100 000-scale metric topographic map

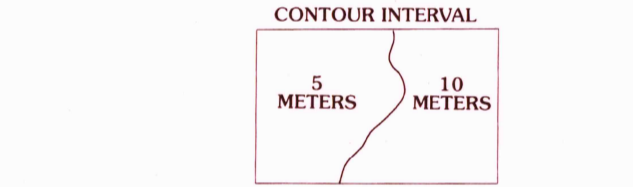


30 X 60 MINUTE QUADRANGLE SHOWING

- Contours and elevations in meters
- Highways, roads and other manmade structures
- Water features
- Woodland areas
- Geographic names



Produced by the United States Geological Survey  
 Compiled from USGS 1:24 000 and 1:62 500-scale topographic maps dated 1958-1963. Plantations revised from aerial photographs taken 1985-1986 and other source data. Revised information not field checked. Map edited 1991.  
 Projection and 10 000-meter grid, zone 15, Universal Transverse Mercator  
 25 000-foot grid ticks based on Mississippi coordinate system, west zone and Louisiana coordinate system, north zone 1927 North American Datum  
 To place on the predicted North American Datum 1983, move the projection lines 15 meters south and 11 meters east  
 There may be private inholdings within the boundaries of the National or State reservations shown on this map  
 CONTOUR INTERVAL 5 AND 10 METERS  
 NATIONAL GEODETIC VERTICAL DATUM OF 1929  
 ELEVATIONS SHOWN TO THE NEAREST METER



THIS MAP COMPLIES WITH NATIONAL MAP ACCURACY STANDARDS

CONVERSION TABLE	DECLINATION DIAGRAM	ADJOINING MAPS
Meters	Feet	1 2 3
2	6.5617	4 5
4	13.1234	6 7 8
6	19.6851	
8	26.2468	
10	32.8085	

To convert meters to feet multiply by 3.2808  
 To convert feet to meters multiply by 0.3048

UTM grid convergence (E/W) and magnetic declination at center of map diagram is approximate

FOR SALE BY U.S. GEOLOGICAL SURVEY DENVER, COLORADO 80225, OR RESTON, VIRGINIA 22092



Topographic Map Symbols

- Primary highway, hard surface
- Secondary highway, hard surface
- Light duty road, principal street, hard or improved surface
- Other road or street, trail
- Route marker, interstate, U.S. State
- Railroad: standard gage; narrow gage
- Bridge: overpass; underpass
- Tunnel: road; railroad
- Built up area, locality, elevation
- Airport, landing field; landing strip
- National boundary
- State boundary
- County boundary
- National or State reservation boundary
- Land grant boundary
- U.S. public lands survey: range, township; section
- Range, township; section line: protected
- Power transmission line, pipeline
- Dam, dam with lock
- Cemetery, building
- Windmill; water well; spring
- Mine shaft; oil or coal; mine, quarry; gravel pit
- Campground; zone area, U.S. location monument
- Ruin; cliff dwellings
- Distorted surface: strip mine, lava, sand
- Contours: index; intermediate; supplementary
- bathymetric contours: index; intermediate
- Stream, lake, perennial; intermittent
- Rapids, large and small; falls, large and small
- Area to be submerged; marsh, swamp
- Land subject to controlled inundation; woodland
- Sand; mangrove
- Other; viewpoint

A pamphlet describing topographic maps is available on request