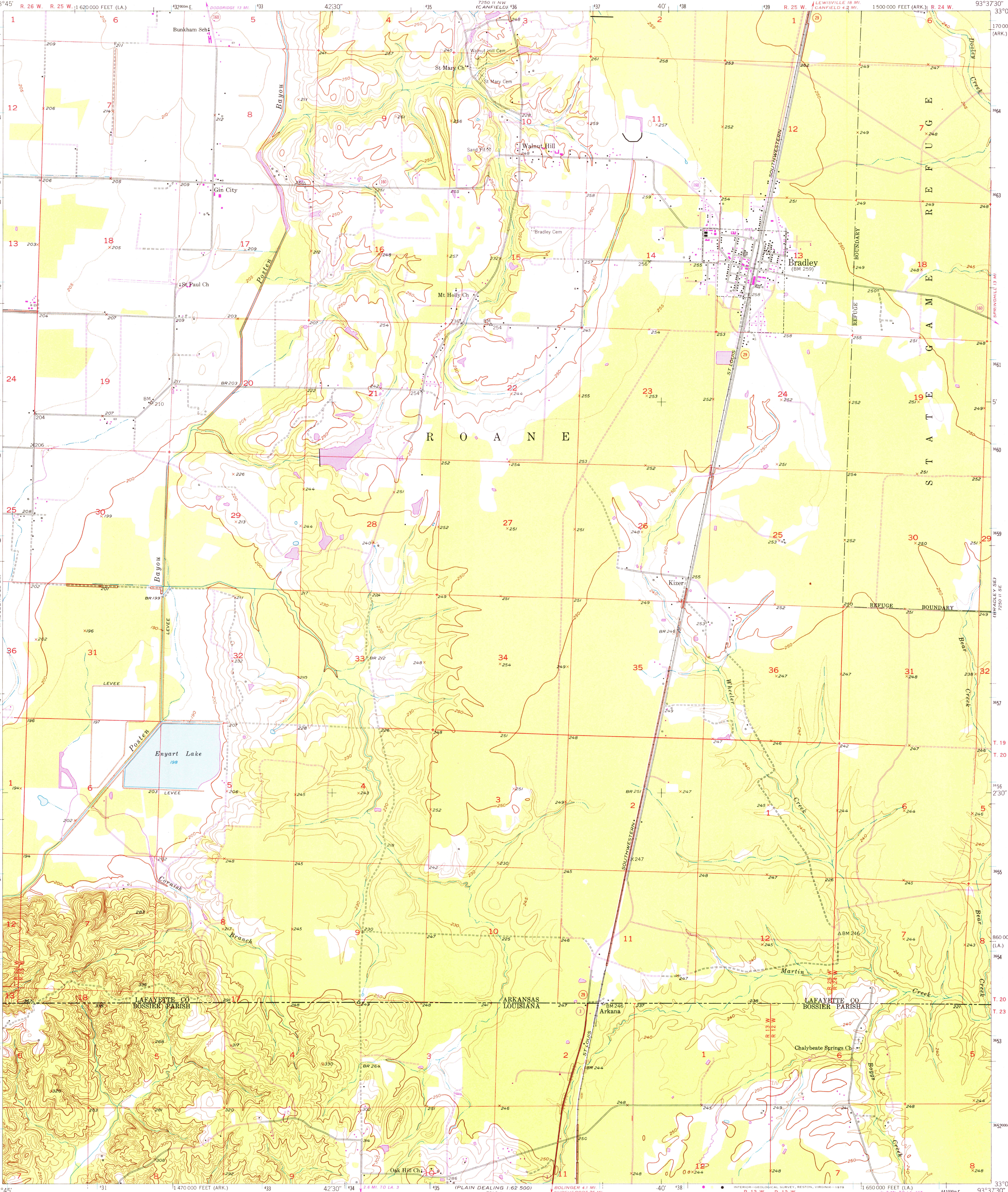


UNITED STATES
DEPARTMENT OF THE INTERIOR
GEOLOGICAL SURVEY



BRADLEY QUADRANGLE
ARKANSAS-LOUISIANA
7.5 MINUTE SERIES (TOPOGRAPHIC)



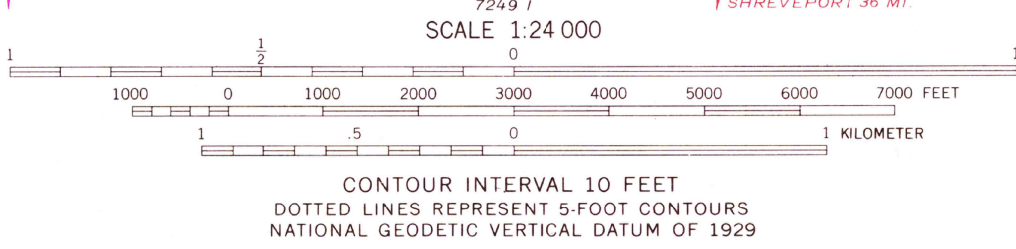
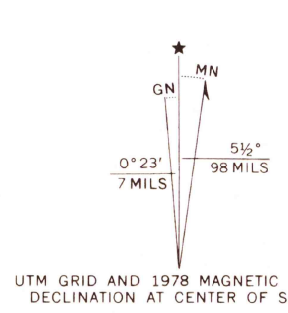
Mapped, edited, and published by the Geological Survey

Control by USGS and USC&GS

Culture and drainage in part compiled from aerial photographs taken 1949. Topography by plane-table surveys 1952

Polyconic projection. 1927 North American datum 10,000-foot grids based on Arkansas coordinate system, south zone, and Louisiana coordinate system, north zone 1000-meter Universal Transverse Mercator grid ticks, zone 15, shown in blue

Revisions shown in purple compiled from aerial photographs taken 1976 and other source data. This information not field checked. Map edited 1978



THIS MAP COMPLIES WITH NATIONAL MAP ACCURACY STANDARDS FOR SALE BY U.S. GEOLOGICAL SURVEY, DENVER, COLORADO 80225, OR RESTON, VIRGINIA 22092, ARKANSAS GEOLOGICAL COMMISSION, LITTLE ROCK, ARKANSAS 72204, AND STATE OF LOUISIANA, DEPARTMENT OF PUBLIC WORKS, BATON ROUGE, LOUISIANA 70804 A FOLDER DESCRIBING TOPOGRAPHIC MAPS AND SYMBOLS IS AVAILABLE ON REQUEST



ROAD CLASSIFICATION

Heavy-duty	4 LANE IS LANE	Light-duty
Medium-duty	2 LANE IS LANE	Unimproved dirt
U.S. Route		State Route

USGS
Historical File
Topographic Division

BRADLEY, ARK.-LA. 2150

1952
AMS 7250 II SW-SERIES V884

APR 11 1978