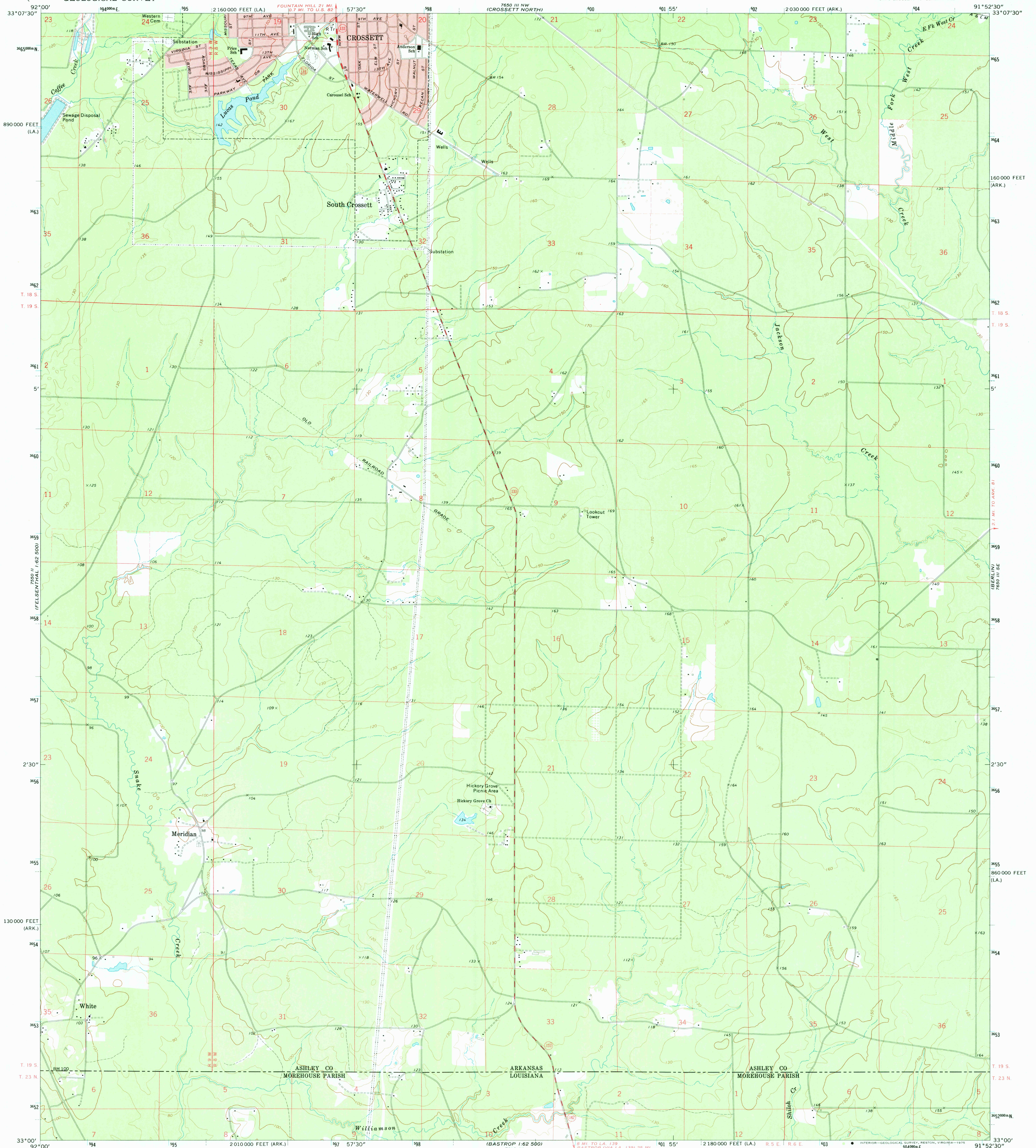
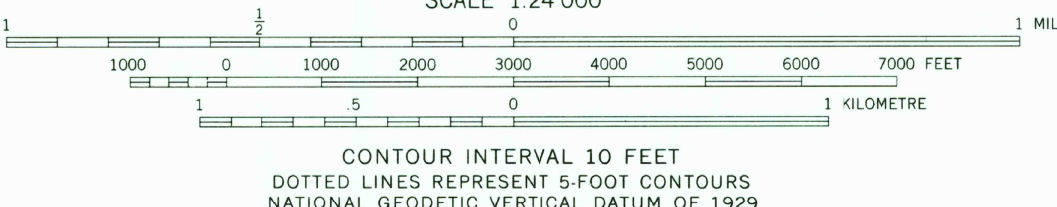
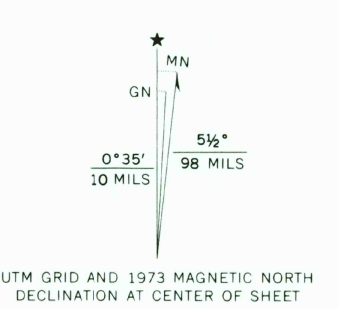


UNITED STATES
DEPARTMENT OF THE INTERIOR
GEOLOGICAL SURVEY

CROSSETT SOUTH QUADRANGLE
ARKANSAS—LOUISIANA
7.5 MINUTE SERIES (TOPOGRAPHIC)
SW/4 CROSSETT 15' QUADRANGLE



Maped, edited, and published by the Geological Survey
Control by USGS and USC&GS
Topography by photogrammetric methods from aerial
photographs taken 1972. Field checked 1973
Projection: Arkansas coordinate system, south zone
(Lambert conformal conic)
10,000-foot grid ticks based on Arkansas coordinate system,
south zone, and Louisiana coordinate system, north zone
1000-metre Universal Transverse Mercator grid ticks,
zone 15, shown in blue. 1927 North American datum
Red tint indicates area in which on-ly landmark buildings are shown
Fine red dashed lines indicate selected fence and field lines where
generally visible on aerial photographs. This information is unchecked



ROAD CLASSIFICATION
Primary highway, hard surface
Secondary highway, hard surface
Light-duty road, hard or improved surface
Unimproved road
Interstate Route
U. S. Route
State Route

THIS MAP COMPLIES WITH NATIONAL MAP ACCURACY STANDARDS
FOR SALE BY U. S. GEOLOGICAL SURVEY, DENVER, COLORADO 80225, OR RESTON, VIRGINIA 22092
ARKANSAS GEOLOGICAL COMMISSION, LITTLE ROCK, ARKANSAS 72201,
AND STATE OF LOUISIANA, DEPARTMENT OF PUBLIC WORKS, BATON ROUGE, LOUISIANA 70804
A FOLDER DESCRIBING TOPOGRAPHIC MAPS AND SYMBOLS IS AVAILABLE ON REQUEST

USGS
HISTORICAL FILE
TOPOGRAPHIC DIVISION

CROSSETT SOUTH, ARK.—LA.
SW/4 CROSSETT 15' QUADRANGLE
N3300—W9152.5/7.5
1973
AMS 7650 III SW—SERIES V884