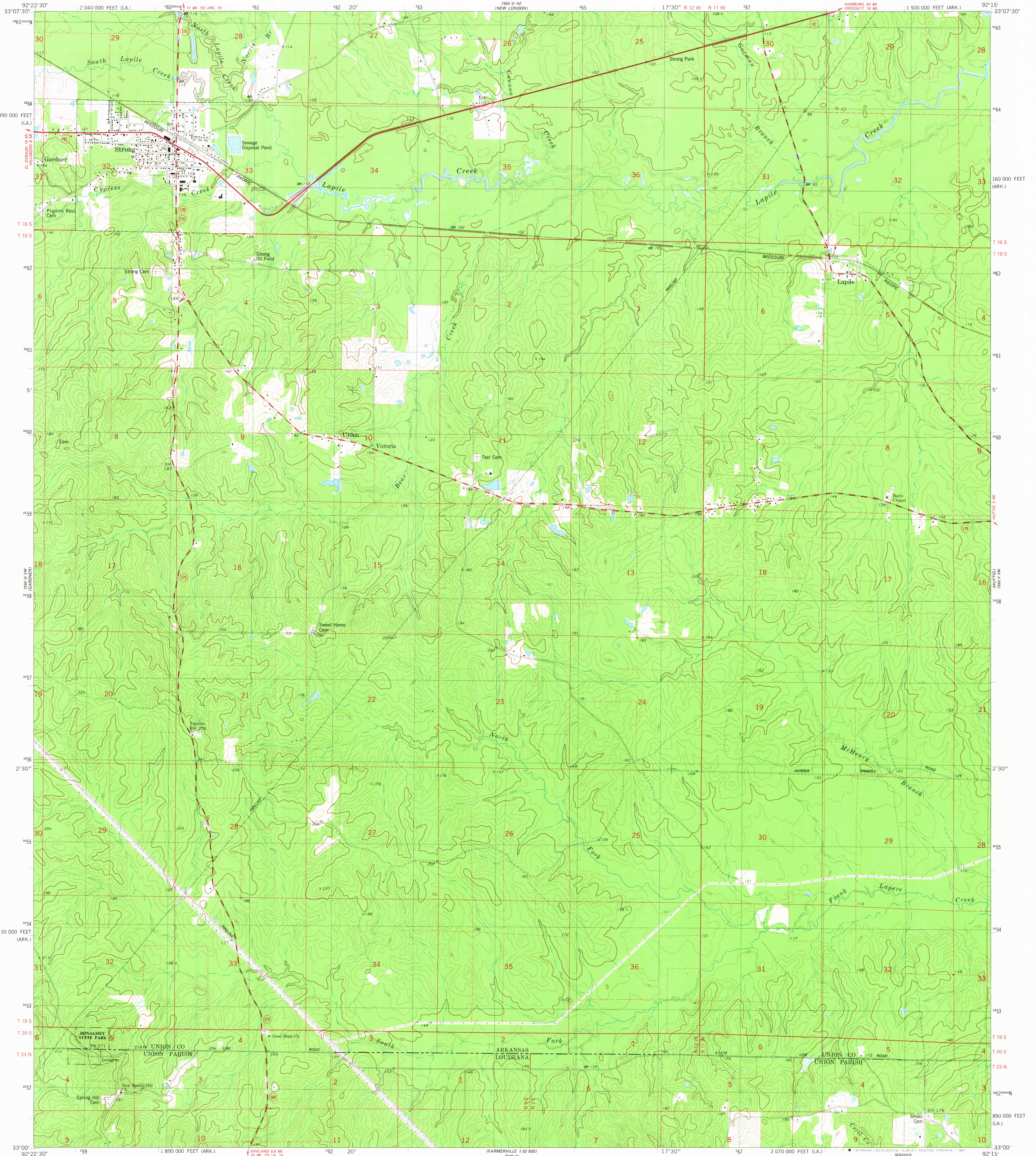


UNITED STATES
DEPARTMENT OF THE INTERIOR
GEOLOGICAL SURVEY

STRONG QUADRANGLE
ARKANSAS-LOUISIANA
7.5 MINUTE SERIES (TOPOGRAPHIC)

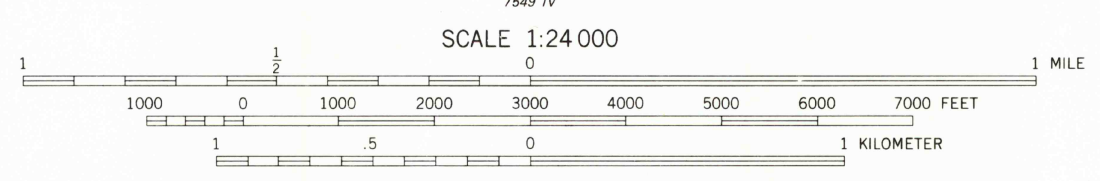
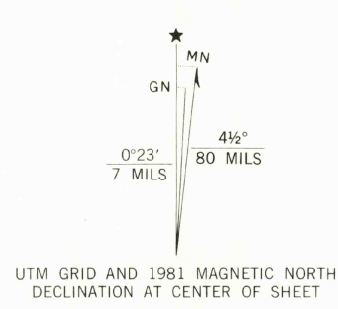


Mapped, edited, and published by the Geological Survey

Control by USGS and NOS/NOAA
Topography by photogrammetric methods from aerial photographs taken 1976. Field checked 1977. Map edited 1981

Projection: Arkansas coordinate system, south zone (Lambert conformal conic)
10,000-foot grid ticks based on Arkansas coordinate system, south zone and Louisiana coordinate system, north zone 1000-meter Universal Transverse Mercator grid, zone 15 1927 North American Datum
To place on the predicted North American Datum 1983 move the projection lines 11 meters south and 14 meters east as shown by dashed corner ticks

There may be private inholdings within the boundaries of the National or State reservations shown on this map



CONTOUR INTERVAL 10 FEET
DOTTED LINES REPRESENT 5-FOOT CONTOURS
NATIONAL GEODETIC VERTICAL DATUM OF 1929

THIS MAP COMPLIES WITH NATIONAL MAP ACCURACY STANDARDS
FOR SALE BY U. S. GEOLOGICAL SURVEY, DENVER, COLORADO 80225 OR RESTON, VIRGINIA 22092.
ARKANSAS GEOLOGICAL COMMISSION, LITTLE ROCK, ARKANSAS 72204.
AND STATE OF LOUISIANA, DEPARTMENT OF PUBLIC WORKS, BATON ROUGE, LOUISIANA 70804
A FOLDER DESCRIBING TOPOGRAPHIC MAPS AND SYMBOLS IS AVAILABLE ON REQUEST



QUADRANGLE LOCATION

ROAD CLASSIFICATION

Primary highway, hard surface	Light duty road, hard or improved surface
Secondary highway, hard surface	Unimproved road
Interstate Route	U. S. Route
	State Route

Fine red dashed lines indicate selected fence and field lines where generally visible on aerial photographs. This information is unchecked

STRONG, ARK.-LA.
N3300-W9215/7.5

1981
DMA 7550 III SE-SERIES V884

OCT 26 1981

Handwritten initials 'JTS' and a signature.