

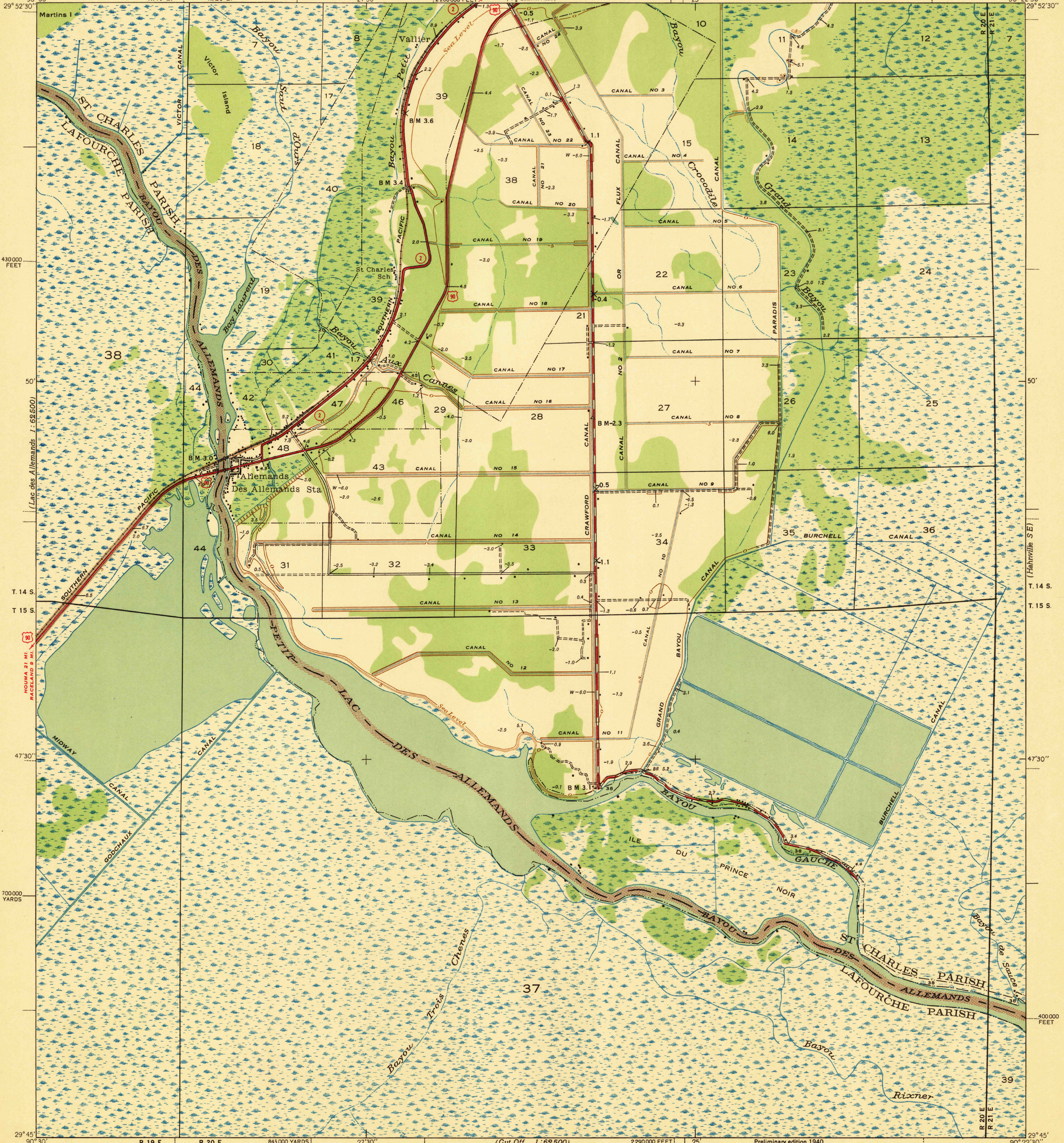
UNITED STATES  
DEPARTMENT OF THE INTERIOR  
GEOLOGICAL SURVEY

WAR DEPARTMENT  
CORPS OF ENGINEERS, U. S. ARMY  
(7 1/2 Hahnville)

LOUISIANA  
ALLEMANDS QUADRANGLE

(Lac des Allemands)  
62500

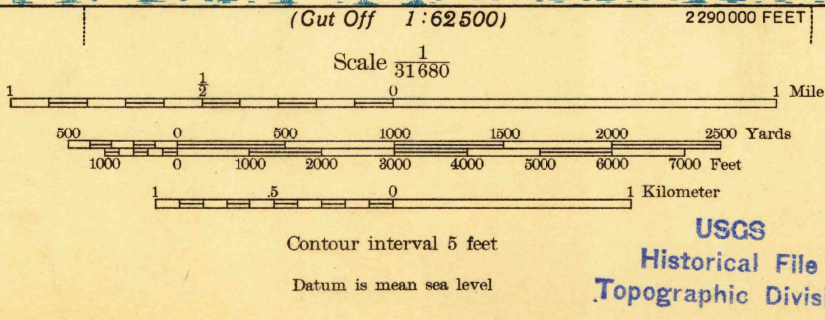
(Luling)  
62500



430000 FEET  
50'  
50'  
T. 14 S.  
T. 15 S.  
700000 YARDS

50'  
50'  
T. 14 S.  
T. 15 S.  
400000 FEET

Topography by W. B. Brewer and J. A. Shumate  
Surveyed in 1938  
Base compiled in cooperation with the State of Louisiana



ROUTES USUALLY TRAVELED  
HARD IMPERVIOUS SURFACES  
OTHER SURFACE IMPROVEMENTS  
Land lines added from General Land Office records adjusted to natural features and control

USGS  
Historical File  
Topographic Division

ALLEMANDS, LA.  
N 2945-W 9022.5/7.5

OCT 11 1940

(Cut Off)  
62500

U. S. G. S.  
FILE COPY