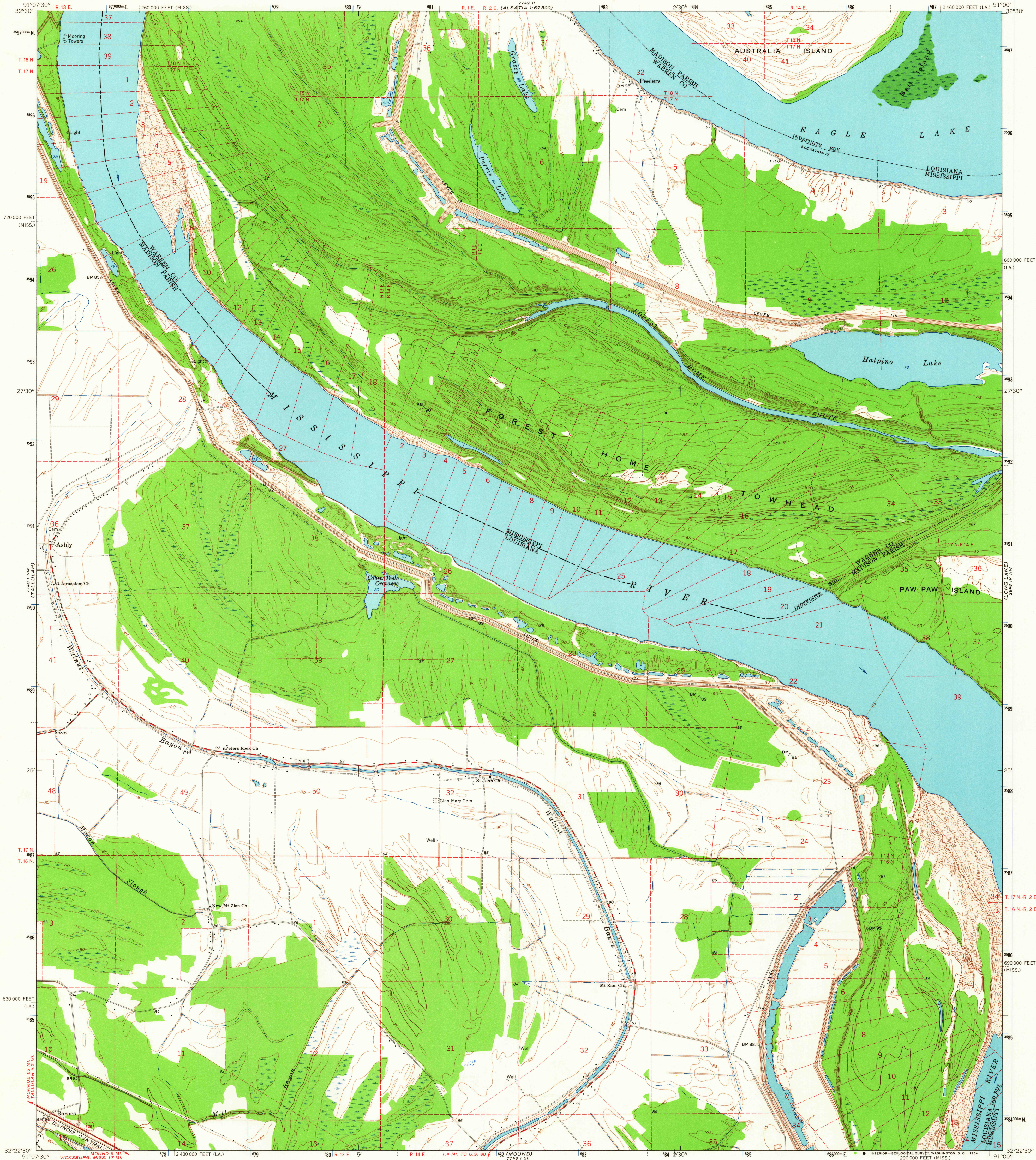


UNITED STATES
DEPARTMENT OF THE INTERIOR
GEOLOGICAL SURVEY

ASHLY QUADRANGLE
LOUISIANA—MISSISSIPPI
7.5 MINUTE SERIES (TOPOGRAPHIC)
NE/4 TALLA BENA 15' QUADRANGLE



Mapped, edited, and published by the Geological Survey

Control by USGS, USC&GS, USCE, and Louisiana Geodetic Survey

Planimetry by photogrammetric methods from aerial photographs taken 1962. Topography by planetable surveys 1962-63

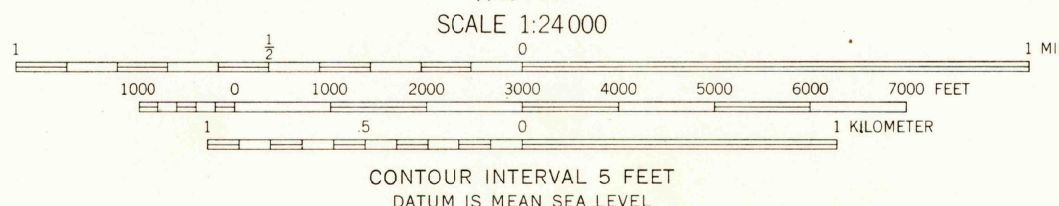
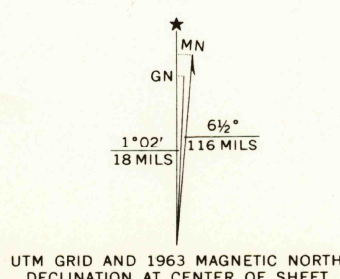
Polyconic projection. 1927 North American datum

10,000-foot grids based on Louisiana coordinate system, north zone and Mississippi coordinate system, west zone

1000-meter Universal Transverse Mercator grid ticks, zone 15, shown in blue

Where omitted, land lines have not been established

Fine red dashed lines indicate selected fence and field lines where generally visible on aerial photographs. This information is unchecked



USGS
Historical File
Topographic Division

ROAD CLASSIFICATION
Heavy-duty ——— Light-duty ———
Medium-duty ——— Unimproved dirt - - - - -
U. S. Route



ASHLY, LA.—MISS.
NE/4 TALLA BENA 15' QUADRANGLE
N3222.5—W9100/7.5

1963

AMS 7748 I NE—SERIES V885