

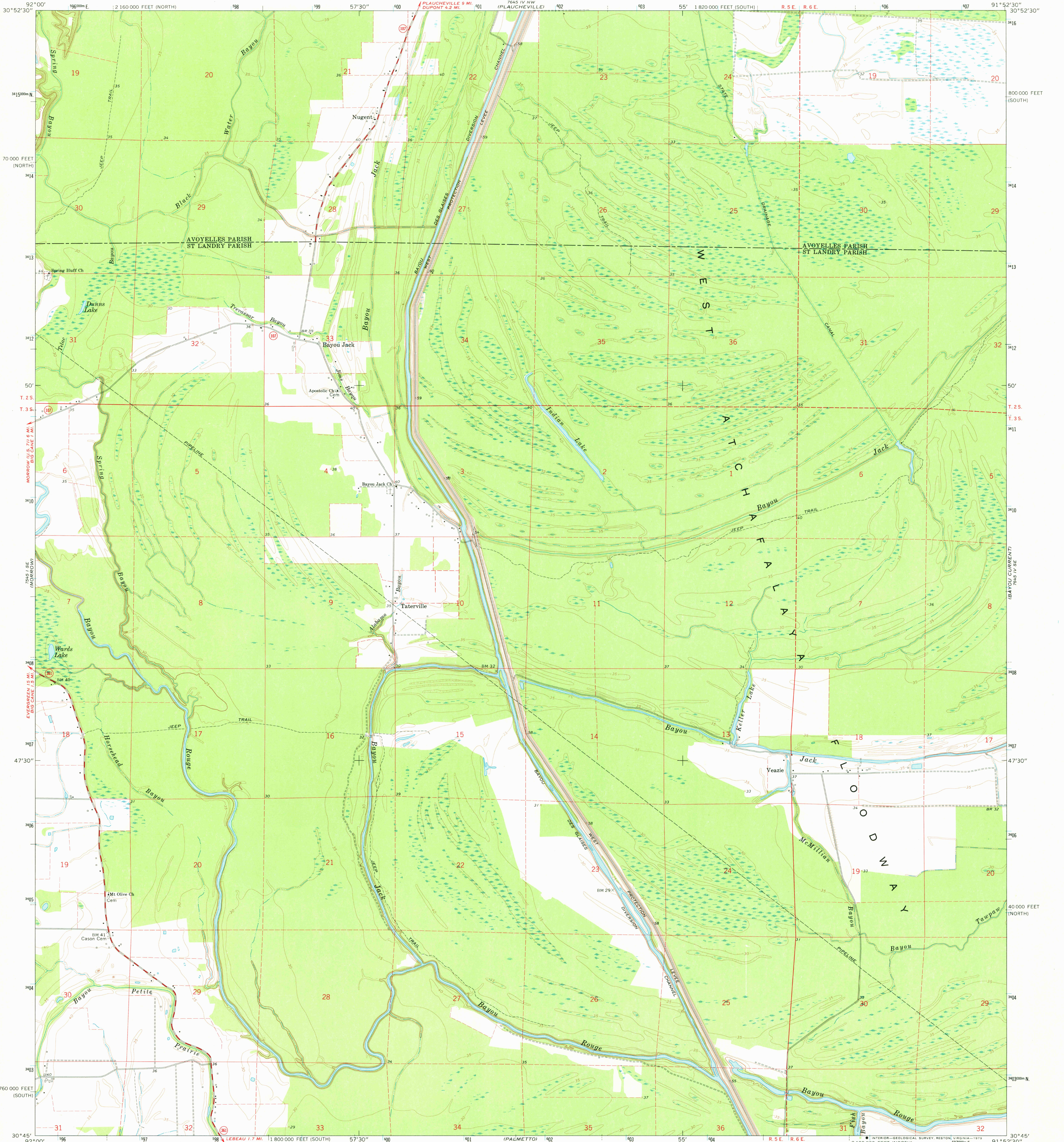
7246 I/NE
COITTESPORT

7246 I/SE
GIMMESPORT

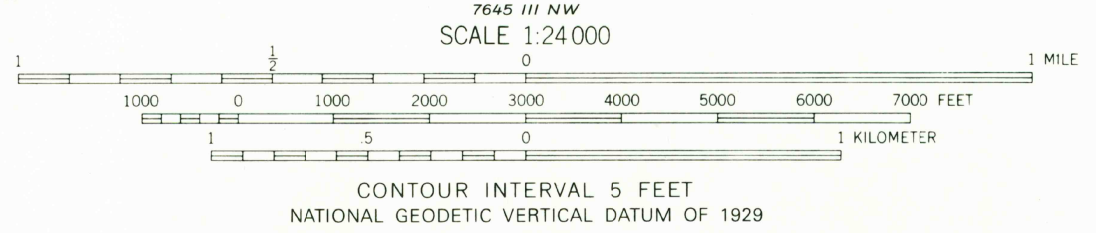
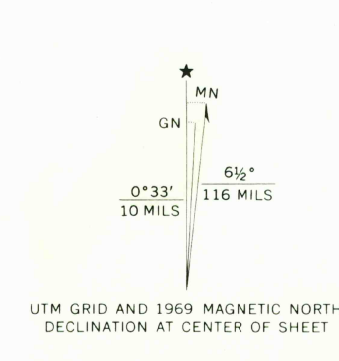
UNITED STATES
DEPARTMENT OF THE INTERIOR
GEOLOGICAL SURVEY



BAYOU JACK QUADRANGLE
LOUISIANA
7.5 MINUTE SERIES (TOPOGRAPHIC)



Maped, edited, and published by the Geological Survey
Control by USGS, USC&GS, and USCE
Planimetry by photogrammetric methods from aerial photographs
taken 1966. Topography by planetable surveys 1967-69
Polyconic projection. 1927 North American datum
10,000-foot grids based on Louisiana coordinate system, south and
north zones
1000-meter Universal Transverse Mercator grid ticks,
zone 15, shown in blue
Fine red dashed lines indicate selected fence and field lines where
generally visible on aerial photographs. This information is unchecked



THIS MAP COMPLIES WITH NATIONAL MAP ACCURACY STANDARDS
FOR SALE BY U. S. GEOLOGICAL SURVEY, DENVER, COLORADO 80225, OR RESTON, VIRGINIA 22092
AND STATE OF LOUISIANA, DEPARTMENT OF PUBLIC WORKS, BATON ROUGE, LOUISIANA 70804
A FOLDER DESCRIBING TOPOGRAPHIC MAPS AND SYMBOLS IS AVAILABLE ON REQUEST

ROAD CLASSIFICATION
Secondary highway, all weather, Light duty road, all weather,
hard surface improved surface
Unimproved road, fair or dry weather
State Route

FEB 13 1980

USGS
Historical File
Topographic Division

BAYOU JACK, LA.
N3045-W9152.5/7.5
1969
AMS 7645 IV SW-SERIES V885

QUADRANGLE LOCATION

1980