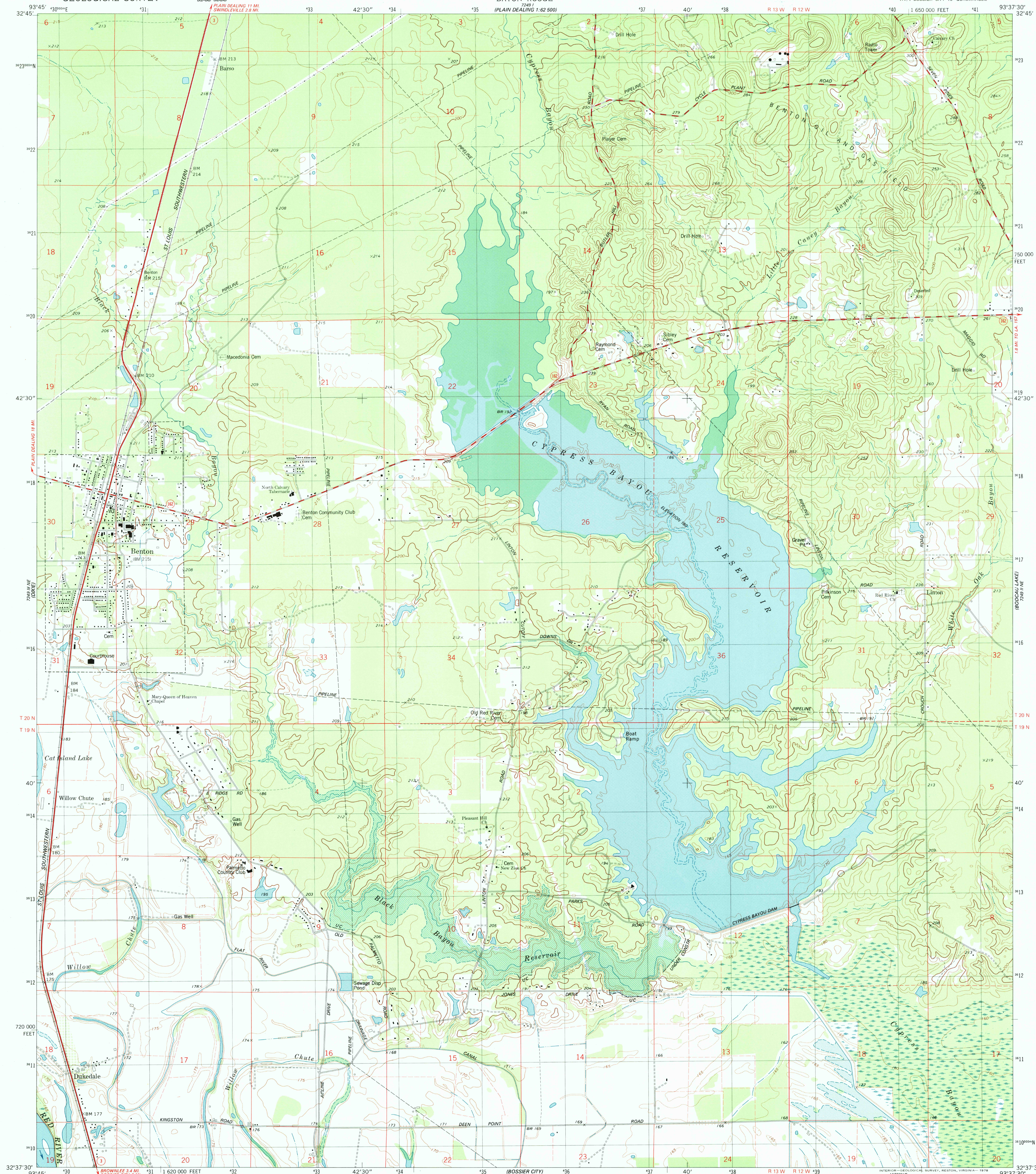


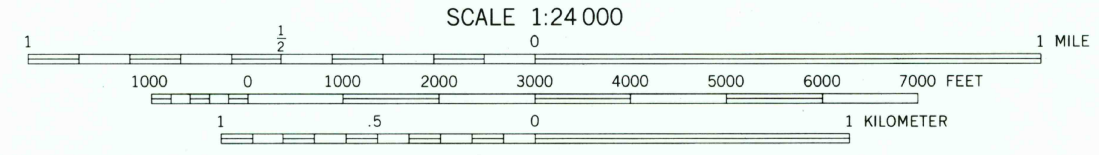
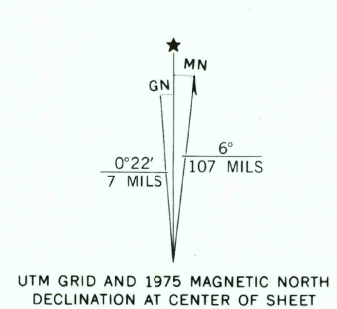
750 000 FEET



750 000 FEET



Maped, edited, and published by the Geological Survey. Control by USGS and NOS/NOAA. Topography by photogrammetric methods from aerial photographs taken 1974. Field checked 1975. Projection and 10,000-foot grid ticks: Louisiana coordinate system, north zone (Lambert conformal conic) 1000-meter Universal Transverse Mercator grid, zone 15 1927 North American datum. Blue hatching indicates area to be submerged to 185 feet. Fine red dashed lines indicate selected fence and field lines where generally visible on aerial photographs. This information is unchecked.



CONTOUR INTERVAL 10 FEET. DOTTED LINES REPRESENT 5-FOOT CONTOURS. NATIONAL GEODETIC VERTICAL DATUM OF 1929.

THIS MAP COMPLIES WITH NATIONAL MAP ACCURACY STANDARDS FOR SALE BY U. S. GEOLOGICAL SURVEY, DENVER, COLORADO 80225, OR RESTON, VIRGINIA 22092 AND STATE OF LOUISIANA, DEPARTMENT OF PUBLIC WORKS, BATON ROUGE, LOUISIANA 70804. A FOLDER DESCRIBING TOPOGRAPHIC MAPS AND SYMBOLS IS AVAILABLE ON REQUEST.



ROAD CLASSIFICATION: Primary highway, hard surface; Secondary highway, hard surface; Interstate Route; U. S. Route; Light-duty road, hard or improved surface; Unimproved road; State Route.

RECEIVED OCT 31 1999

BENTON, LA. NW/4 BOSSIER CITY 15' QUADRANGLE N3237.5 - W9337.5/7.5

USGS NMD HISTORICAL MAP ARCHIVES

1975 AMS 7249 II NW—SERIES V885

