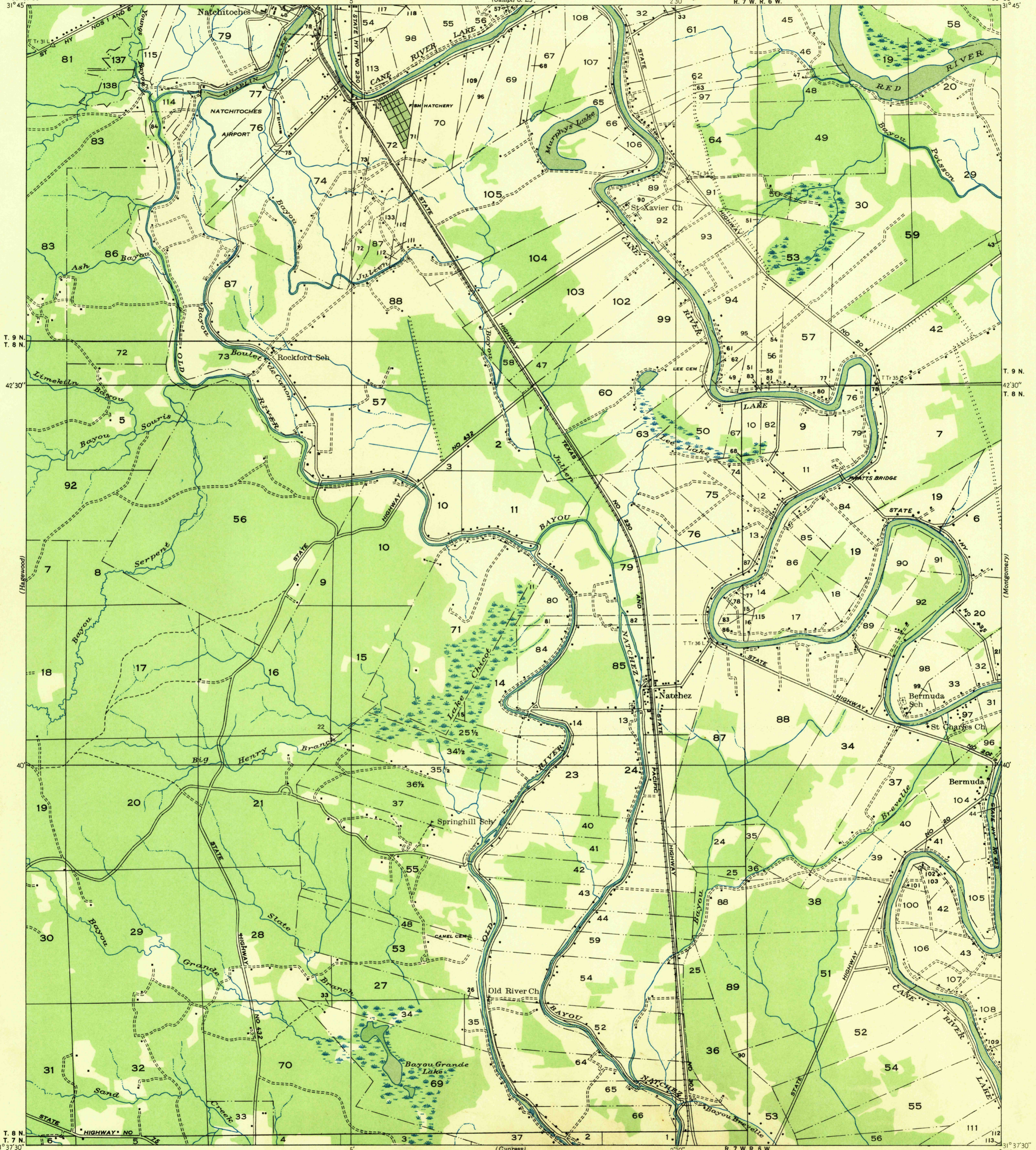
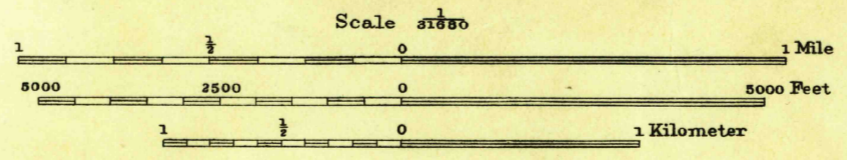


Unedited advance sheet  
Subject to correction



Glenn S. Smith, Division Engineer  
Compiled by Geological Survey from aerial photographs  
Field examination in 1936-1937

71°  
TRUE NORTH  
MAGNETIC NORTH  
APPROXIMATE MEAN  
DECLINATION, 1933



USGS  
Historical File  
Topographic Division

Polygonic projection, 1927 North American datum  
Land lines added from General Land Office  
records adjusted to natural features and control

U. S. G. S.  
FILE COPY

BERMUDA, LA.