

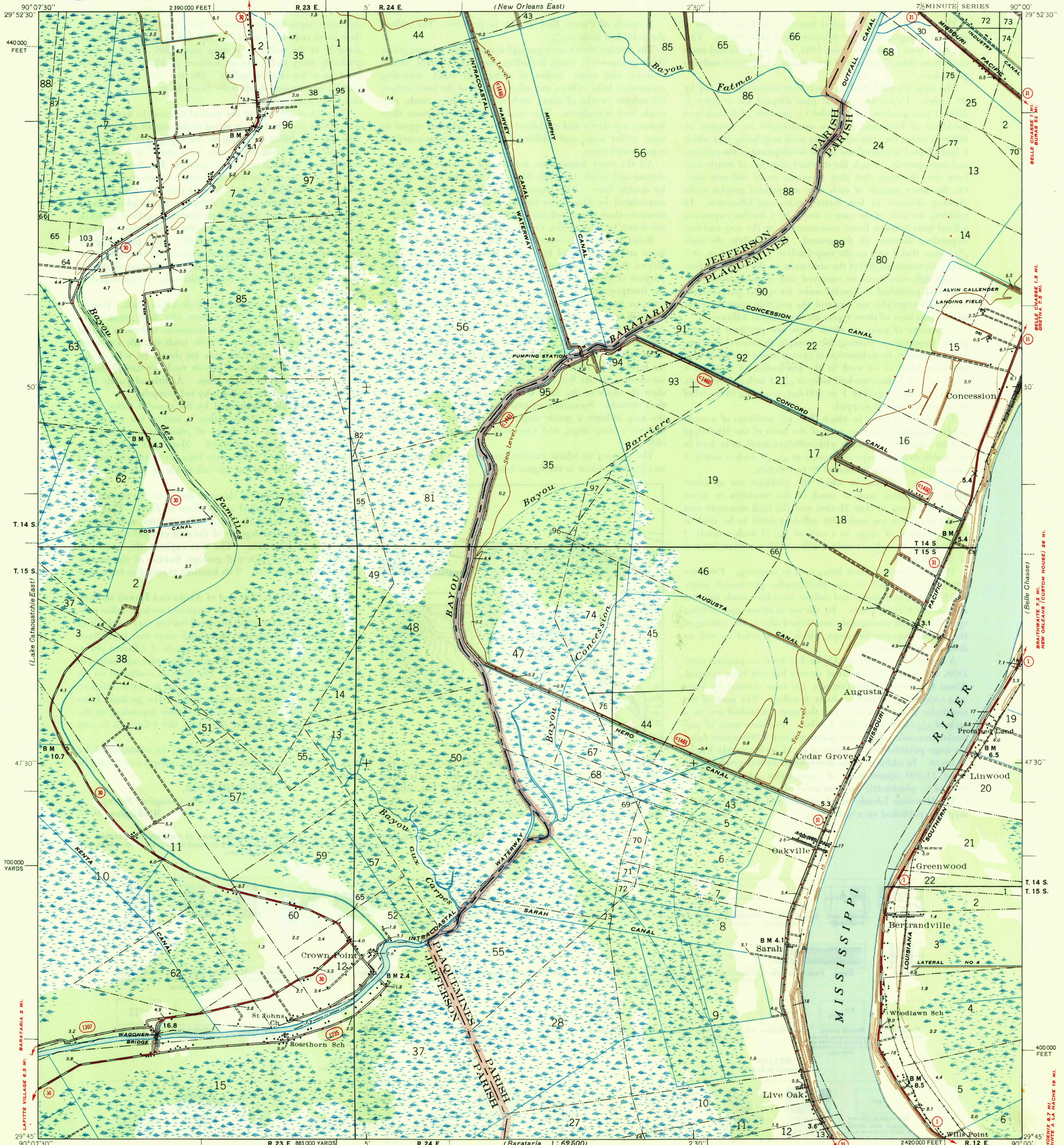
U. S. G. S.
FILE COPY
Inspection and Editing.

UNITED STATES
DEPARTMENT OF THE INTERIOR
GEOLOGICAL SURVEY

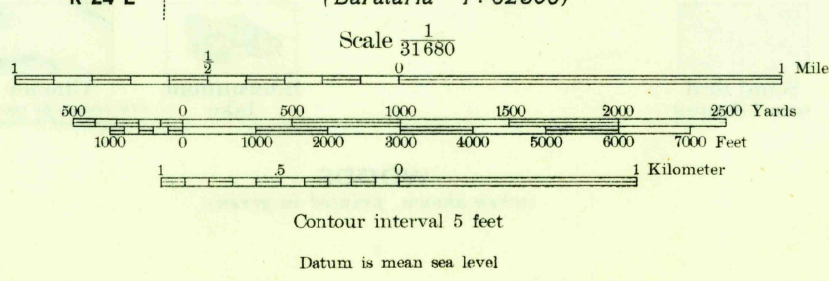
WAR DEPARTMENT
CORPS OF ENGINEERS, U. S. ARMY
(New Orleans East)

NEW ORLEANS (CUSTOM HOUSE) 7.6 MI.
GREYNA 4 MI.

LOUISIANA
BERTRANDVILLE QUADRANGLE
7 1/2 MINUTE SERIES



Topography by J. B. Leachman, J. P. Rydeen, and Elmer Elshire
Surveyed in 1938
Base compiled in cooperation with the State of Louisiana



ROAD CLASSIFICATION
1946
Dependable hard surface
heavy-duty road
Secondary hard-surface
all-weather road
More than two lanes indicated along road with tick at point of change

Dry weather roads
Loose-surface graded
Unsurfaced, graded
Dirt road

U. S. Route (15)
State Route (26)

USGS
Historical File
Topographic Division
U. S. G. S.
FILE COPY
Inspection and Editing.

Polygonic projection. 1927 North American datum
5000 yard grid based on U. S. zone system, C
10000 foot grid based on Louisiana (South)
rectangular coordinate system
Land lines added from General Land Office
records adjusted to natural features and control
BERTRANDVILLE, LA.
Edition of 1947
N2945-W9000/7.5

MAY 27 1947

2140