

Plain Dealing SW

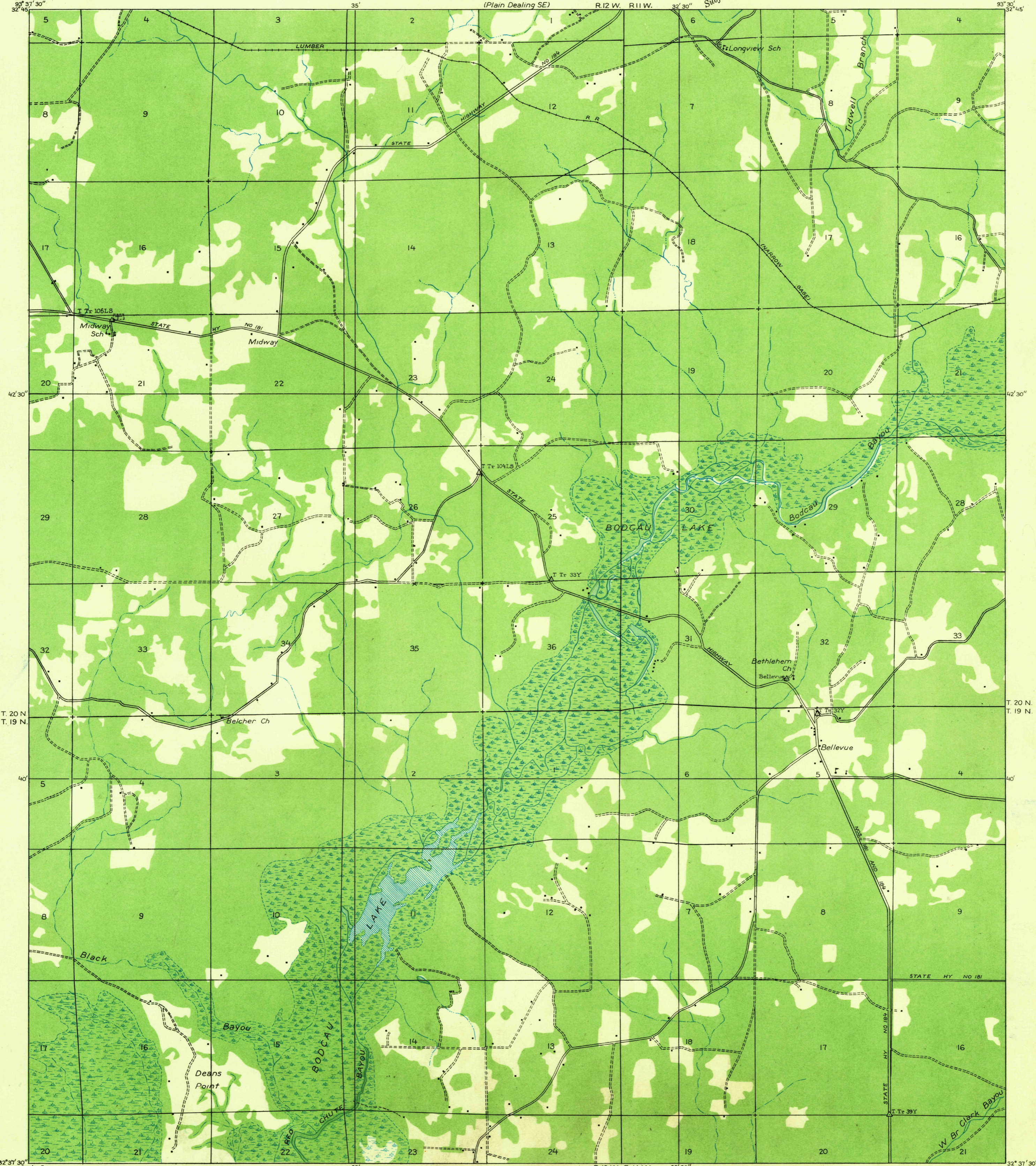
U. S. G. S.  
FILE COPY  
Inspection and Editing.

DEPARTMENT OF THE INTERIOR  
U. S. GEOLOGICAL SURVEY

STATE OF LOUISIANA  
BOARD OF STATE ENGINEERS  
HARRY JACOBS, CHIEF ENGINEER  
(Plain Dealing SE)

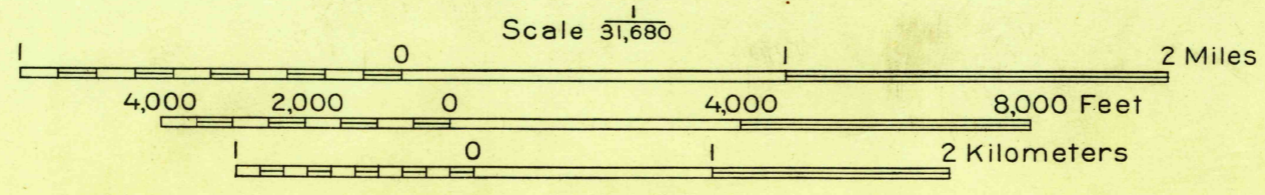
LOUISIANA  
(BOSSIER PARISH)  
BOSSIER QUADRANGLE  
(N E QUARTER)

(Sept 1927)  
62500



Glenn S. Smith, Division Engineer  
Compiled by U. S. Geological Survey after field examination  
of aerial photographs taken by Air Corps, U. S. Army  
Control by U. S. Geological Survey and U. S. Coast and Geodetic Survey  
Field examination in 1932

TRUE NORTH  
MAGNETIC NORTH  
APPROXIMATE MEAN  
DECLINATION, 1932



USGS  
Historical File  
Topographic Division

Polyconic projection, 1927 North American datum  
Land lines added from General Land Office records adjusted to natural features and control  
Township lines  
Township lines, adjustment indefinite  
Section lines, adjustment indefinite  
Section lines  
Grant lines  
Grant lines, adjustment indefinite  
Ditches  
Shallow ditches

BOSSIER, LA.  
(N E)

Map changed to Bossier, LA. NE 188