

(Colfax) 62500

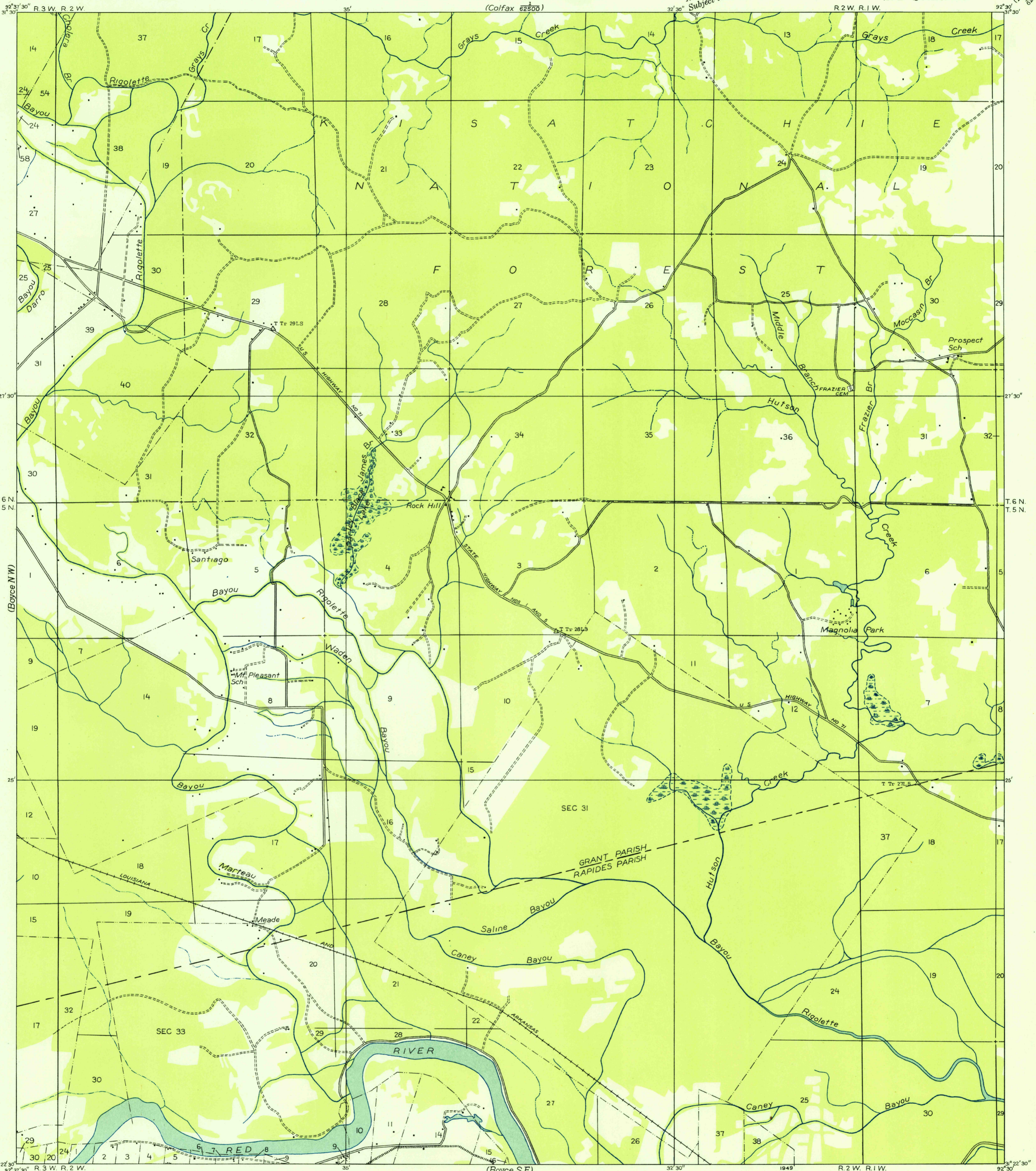
UNITED STATES DEPARTMENT OF THE INTERIOR GEOLOGICAL SURVEY

U. S. G. S. FILE COPY Inspection and Editing.

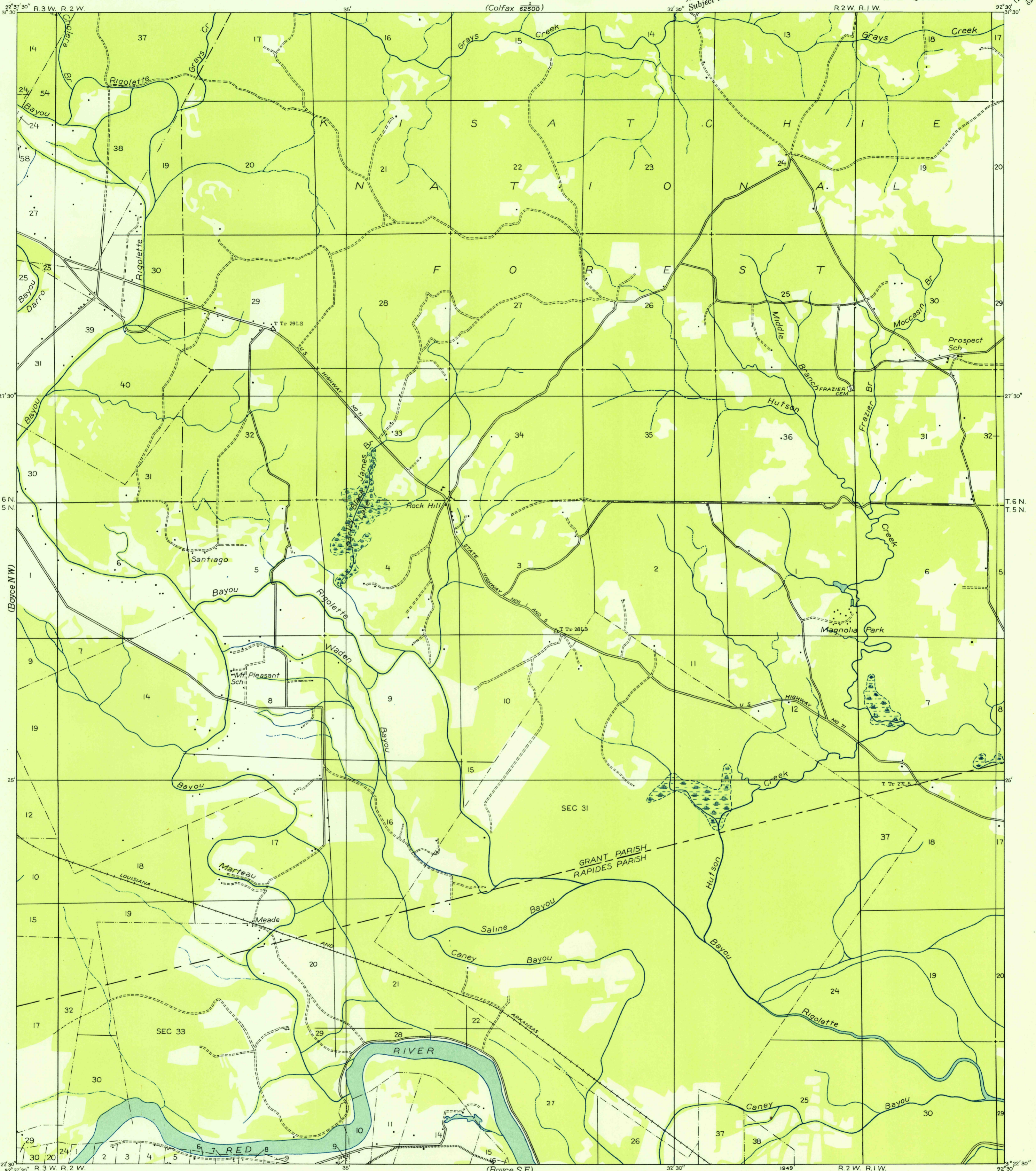
STATE OF LOUISIANA BOARD OF STATE ENGINEERS

LOUISIANA BOYCE QUADRANGLE (NE QUARTER)

(Pollock) 62500

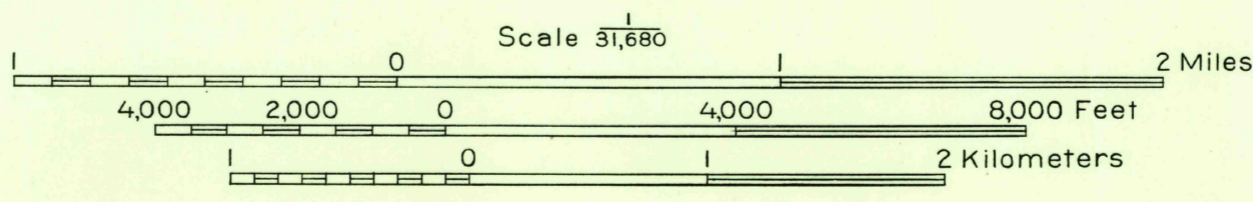


Advance sheet Subject to correction



Glenn S. Smith, Division Engineer  
Compiled by U. S. Geological Survey after field examination  
of aerial photographs taken by Air Corps, U. S. Army  
Control by U. S. Geological Survey  
Field examination in 1932

TRUE NORTH  
MAGNETIC NORTH  
APPROXIMATE MEAN  
DECLINATION, 1932



USGS  
Historical File  
Topographic Division

Polyconic projection, 1927 North American datum  
Land lines added from General Land Office  
records adjusted to natural features and control  
Township lines  
Township lines, adjustment indefinite  
Section lines  
Section lines, adjustment indefinite  
Grant lines  
Grant lines, adjustment indefinite  
Ditches  
Shallow ditches

U. S. G. S. FILE COPY Inspection and Editing.

BOYCE, LA. (N E)

N 31225-W 9230/75

SEP 22 1949

1110