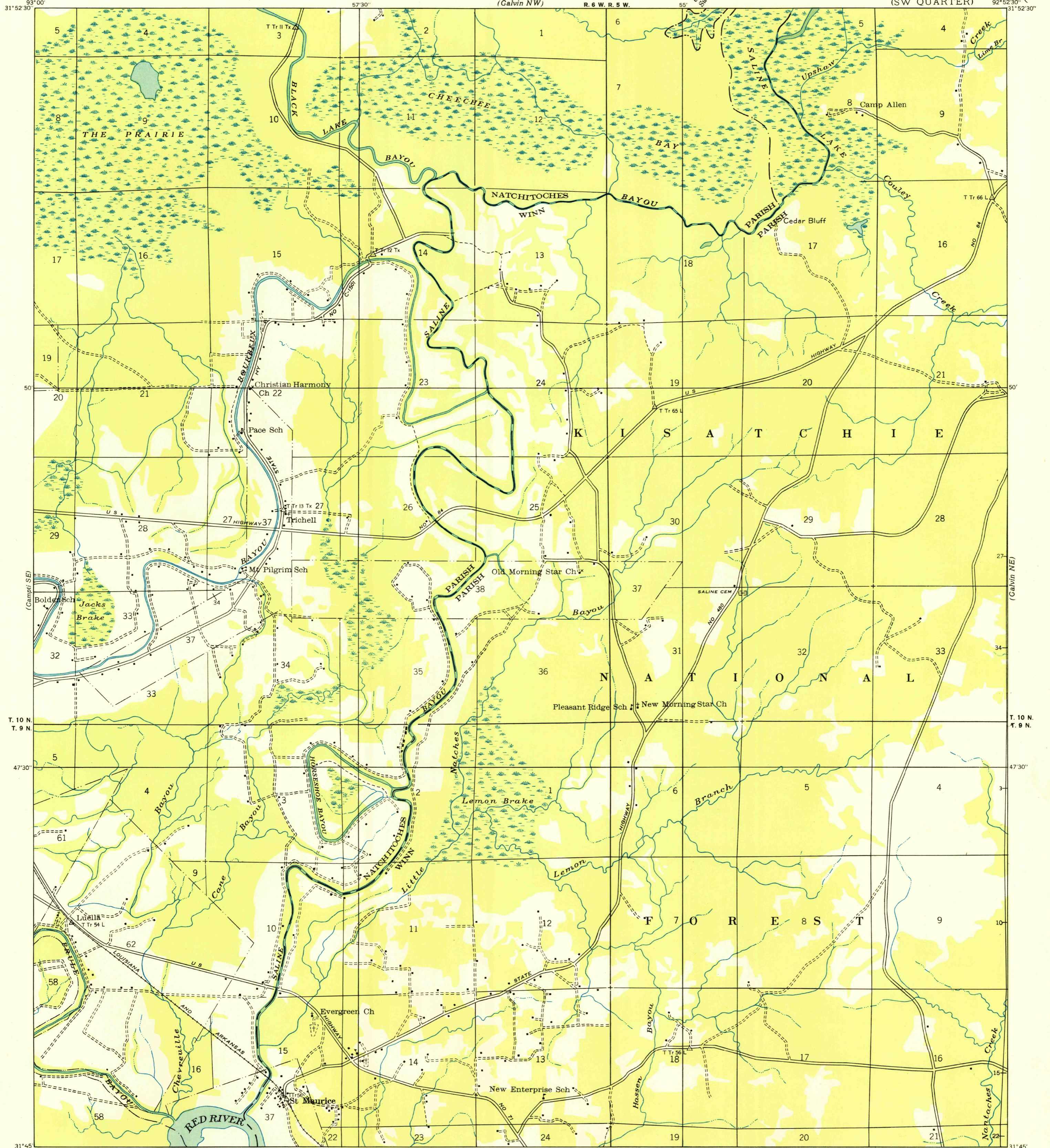


U.S.G.S.  
FILE COPY  
Inspection and Editing.

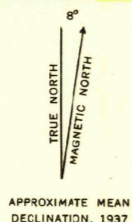
UNITED STATES  
DEPARTMENT OF THE INTERIOR  
GEOLOGICAL SURVEY

STATE OF LOUISIANA  
BOARD OF STATE ENGINEERS  
(Calvin NW) R. 6 W. R. 5 W.

LOUISIANA  
CALVIN QUADRANGLE  
(SW QUARTER) 92° 52' 30" (Calvin NE)



Glenn S. Smith, Division Engineer  
Compiled by Geological Survey from aerial photographs  
Field examination in 1937



USGS  
Historical File  
Topographic Division

U.S.G.S.  
FILE COPY  
Inspection and Editing.

CALVIN, LA.  
(S. W.)

OCT 14 1949 1075