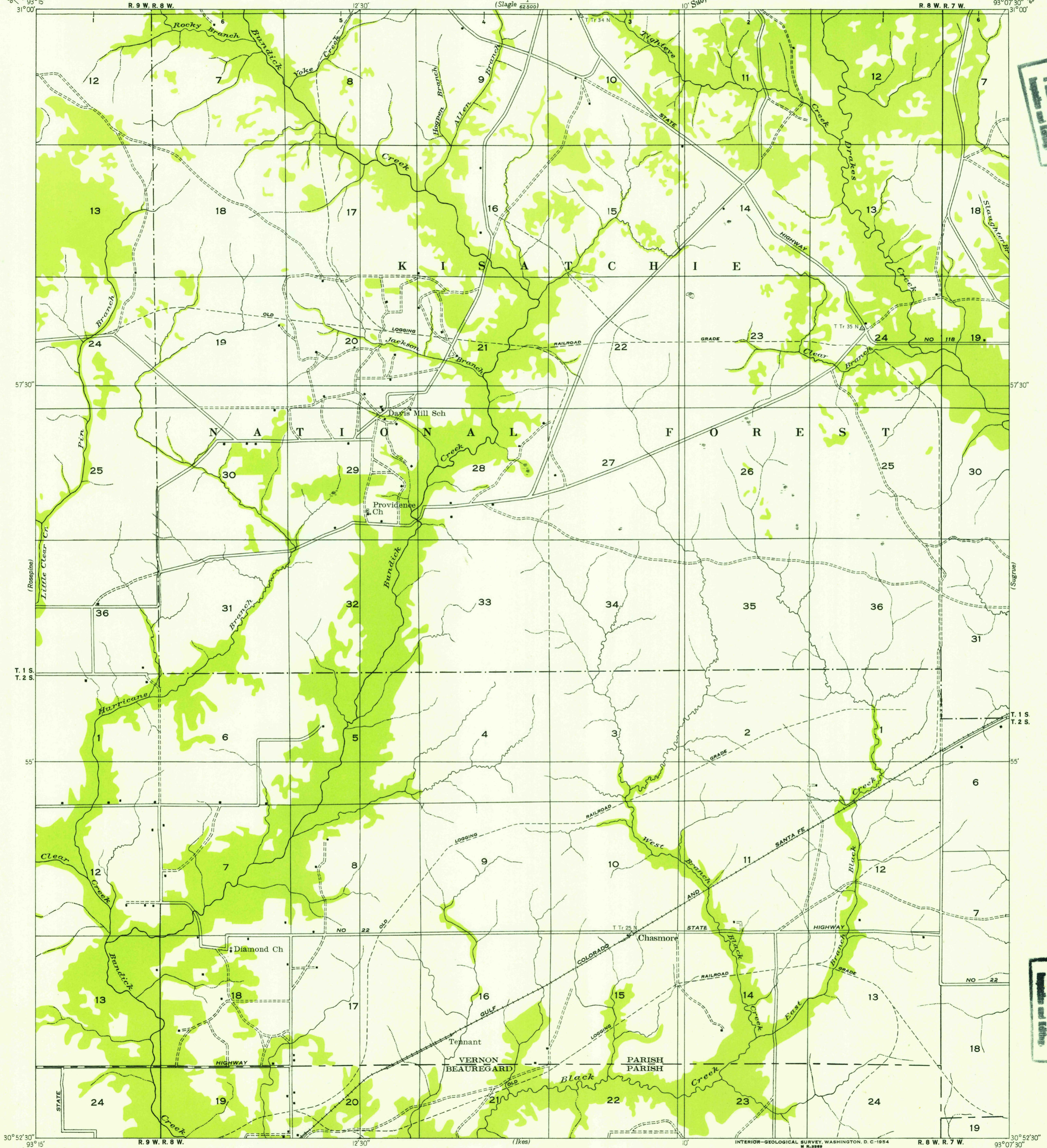


Advance sheet.  
10' Subject to correction.

(Slagle)  
62500

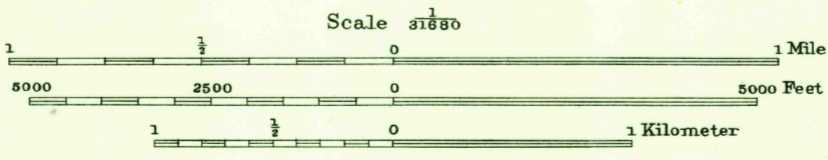


FILE COPY  
Geological Survey  
Washington, D.C.

FILE COPY  
Geological Survey  
Washington, D.C.

Glenn S. Smith, Division Engineer  
Compiled by Geological Survey from aerial photograph.  
Field examination in 1935

TRUE NORTH  
MAGNETIC NORTH  
APPROXIMATE MEAN  
DECLINATION, 1935



USGS  
Historical File  
Topographic Division

CHASMORE, LA.  
N 3052.5 - W 9307.5 / 7.5

JUN 2 1954

1055