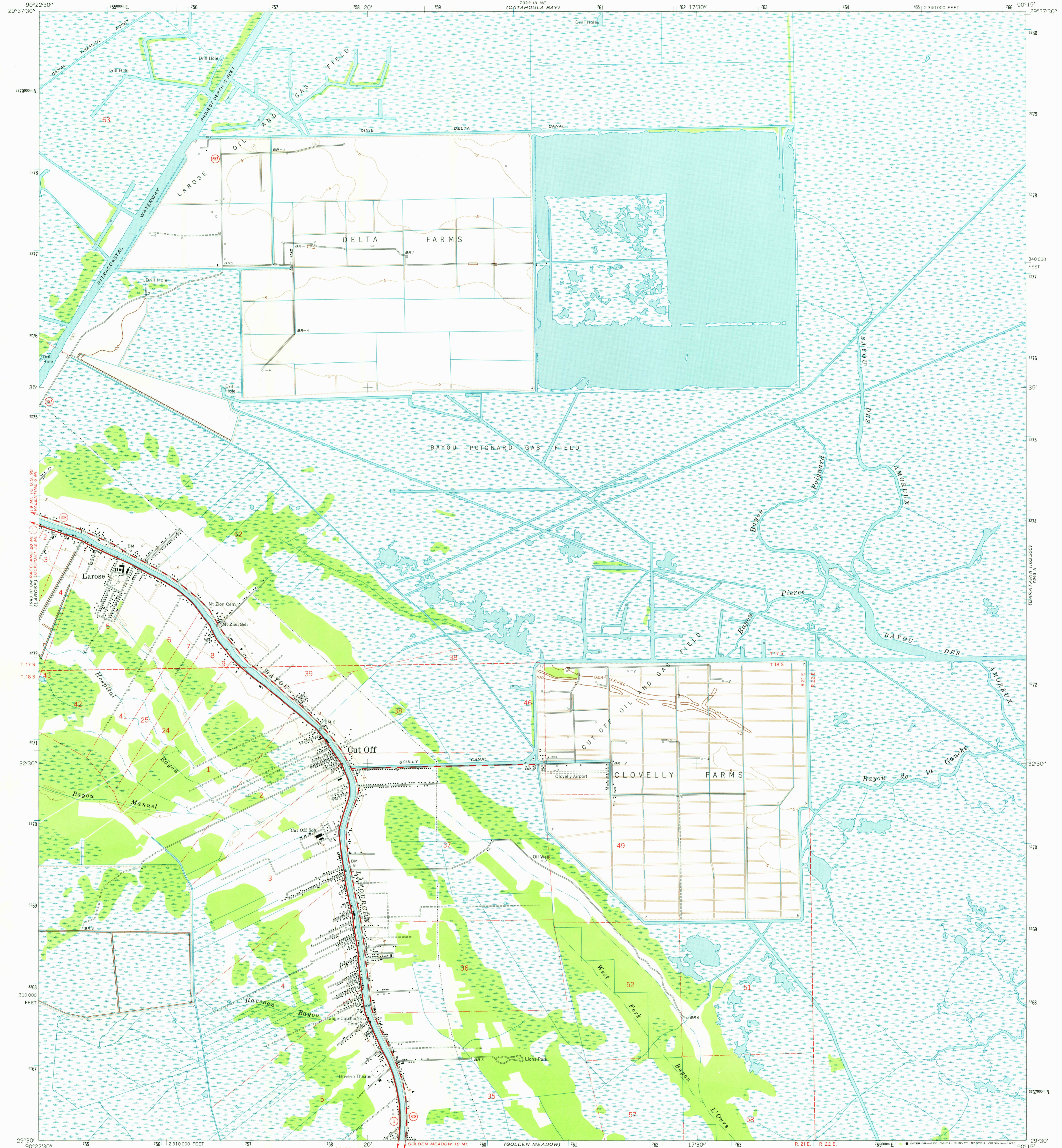


754 11 W
754 11 W
754 11 W

UNITED STATES
DEPARTMENT OF THE INTERIOR
GEOLOGICAL SURVEY

CUT OFF QUADRANGLE
LOUISIANA-LAFOURCHE PARISH
7.5 MINUTE SERIES (TOPOGRAPHIC)
SE/4 CUT OFF 15' QUADRANGLE

754 11 W
754 11 W
754 11 W

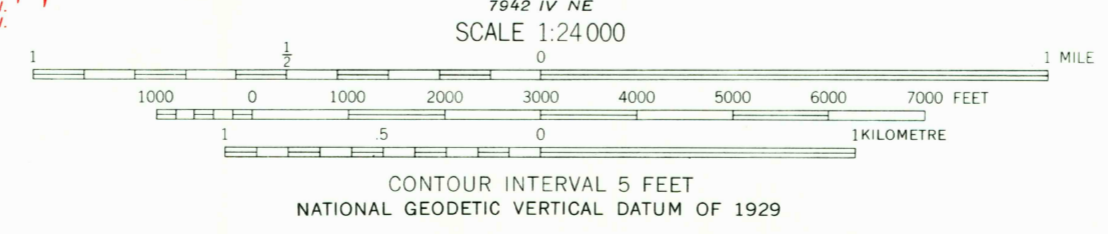


754 11 W
754 11 W
754 11 W

Maped, edited, and published by the Geological Survey in cooperation with State of Louisiana, Department of Public Works
Control by USGS and USC&GS
Planimetry by photogrammetric methods from aerial photographs taken 1962. Topography by planetable surveys 1963
Polyconic projection. 1927 North American datum
10,000-foot grid based on Louisiana coordinate system, south zone
1000-metre Universal Transverse Mercator grid ticks, zone 15, shown in blue
Where omitted, land lines have not been established

LAKE SCULLY CAMP
754 11 W
754 11 W
754 11 W

UTM GRID AND 1963 MAGNETIC NORTH DECLINATION AT CENTER OF SHEET
1°19' 23 MILS
6" 107 MILS



754 11 W
754 11 W
754 11 W

ROAD CLASSIFICATION
Heavy-duty ——— Light-duty ———
Medium-duty ——— Unimproved dirt - - - - -
State Route (circle with number)

CONTOUR INTERVAL 5 FEET
NATIONAL GEODETIC VERTICAL DATUM OF 1929

SCALE 1:24,000

QUADRANGLE LOCATION

USGS
HISTORICAL FILE
TOPOGRAPHIC DIVISION

CUT OFF, LA.
SE/4 CUT OFF 15' QUADRANGLE
N2930-W9015/7.5

1963

AMS 7943 III SE-SERIES V885

FEB 10 1976

THIS MAP COMPLIES WITH NATIONAL MAP ACCURACY STANDARDS
FOR SALE BY U. S. GEOLOGICAL SURVEY, DENVER, COLORADO 80225, OR RESTON, VIRGINIA 22092
AND BY THE STATE OF LOUISIANA, DEPARTMENT OF PUBLIC WORKS, BATON ROUGE, LOUISIANA 70804
A FOLDER DESCRIBING TOPOGRAPHIC MAPS AND SYMBOLS IS AVAILABLE ON REQUEST