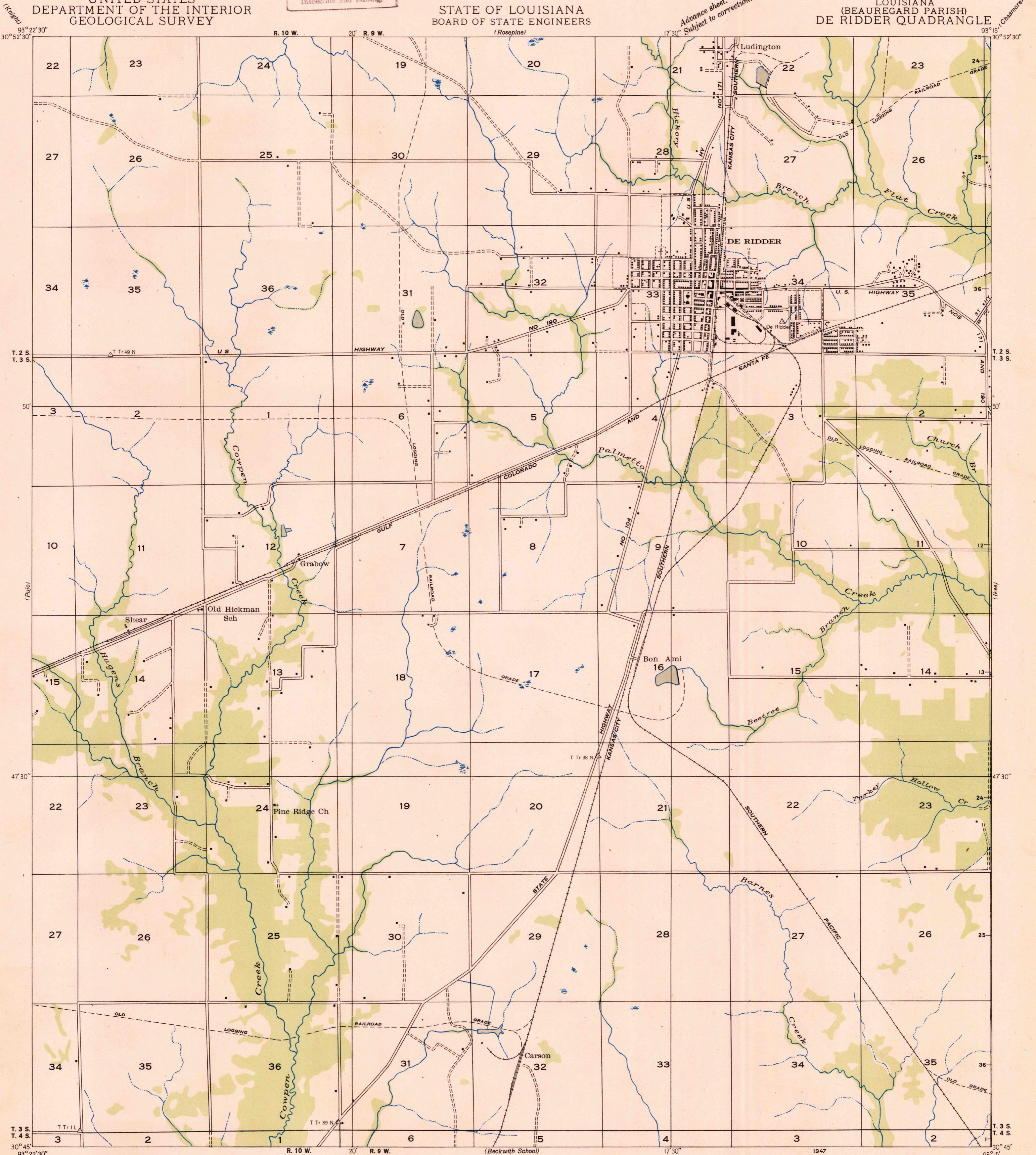


U. S. G. S.  
**FILE COPY**  
Inspection and Editing.

UNITED STATES  
DEPARTMENT OF THE INTERIOR  
GEOLOGICAL SURVEY

STATE OF LOUISIANA  
BOARD OF STATE ENGINEERS

LOUISIANA  
(BEAUREGARD PARISH)  
DE RIDDER QUADRANGLE

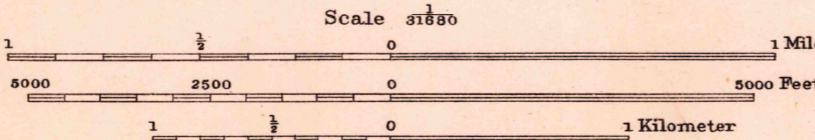


Advance sheet.  
Subject to correction.

(Chasmore)

Glenn S. Smith, Division Engineer  
Compiled by Geological Survey from aerial photographs  
Field examination in 1935

TRUE NORTH  
MAGNETIC NORTH  
APPROXIMATE MEAN  
DECLINATION, 1935



USGS  
Historical File  
Topographic Division  
**FILE COPY**  
Inspection and Editing.

Polyconic projection, 1927 North American datum  
Land lines added from General Land Office  
records adjusted to natural features and control

Township lines, adjustment indefinite	---
Section lines	---
Section lines, adjustment indefinite	---

DE RIDDER, LA.  
N 3045-W 9315/7.5

MAY 19 1947 630