

U.S.G.S.  
FILE COPY  
Inspection and Editing.

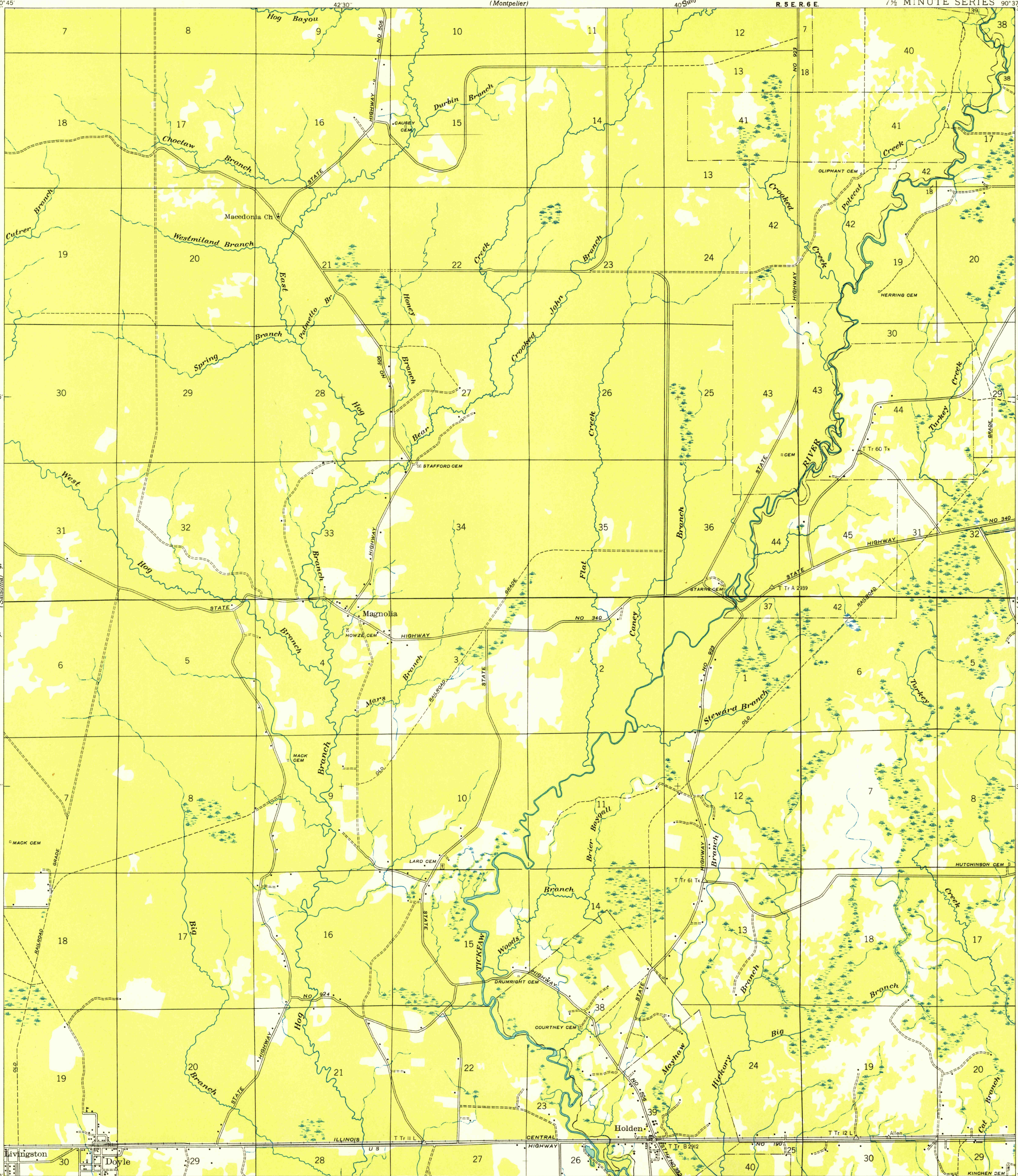
UNITED STATES  
DEPARTMENT OF THE INTERIOR  
GEOLOGICAL SURVEY

STATE OF LOUISIANA  
DEPARTMENT OF PUBLIC WORKS  
BATON ROUGE  
(Montpelier)

LOUISIANA  
(LIVINGSTON PARISH)  
DOYLE QUADRANGLE  
7 1/2 MINUTE SERIES

(Pipe Grove)  
30° 45'  
30° 37' 30"  
35'  
T. 5 S.  
T. 6 S.  
32° 30'  
30° 30'  
30° 45'

(Amite)  
36° 37' 30"  
36° 30'  
T. 5 S.  
T. 6 S.  
32° 30'  
30° 30'

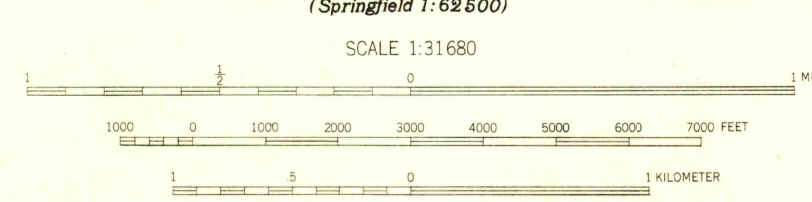


Unedited advance sheet  
Subject to correction

R. 5 E. R. 6 E.

Compiled by Geological Survey from aerial photographs  
Field examination in 1940

64°  
MAGNETIC NORTH  
APPROXIMATE MEAN  
DECLINATION 1940



Polyconic projection. 1927 North American datum  
Land lines added from General Land Office  
records adjusted to natural features and control

USGS  
Historical File  
Topographic Division  
Inspection and Editing.

DOYLE, LA.  
N 3030-W9037.5/7.5