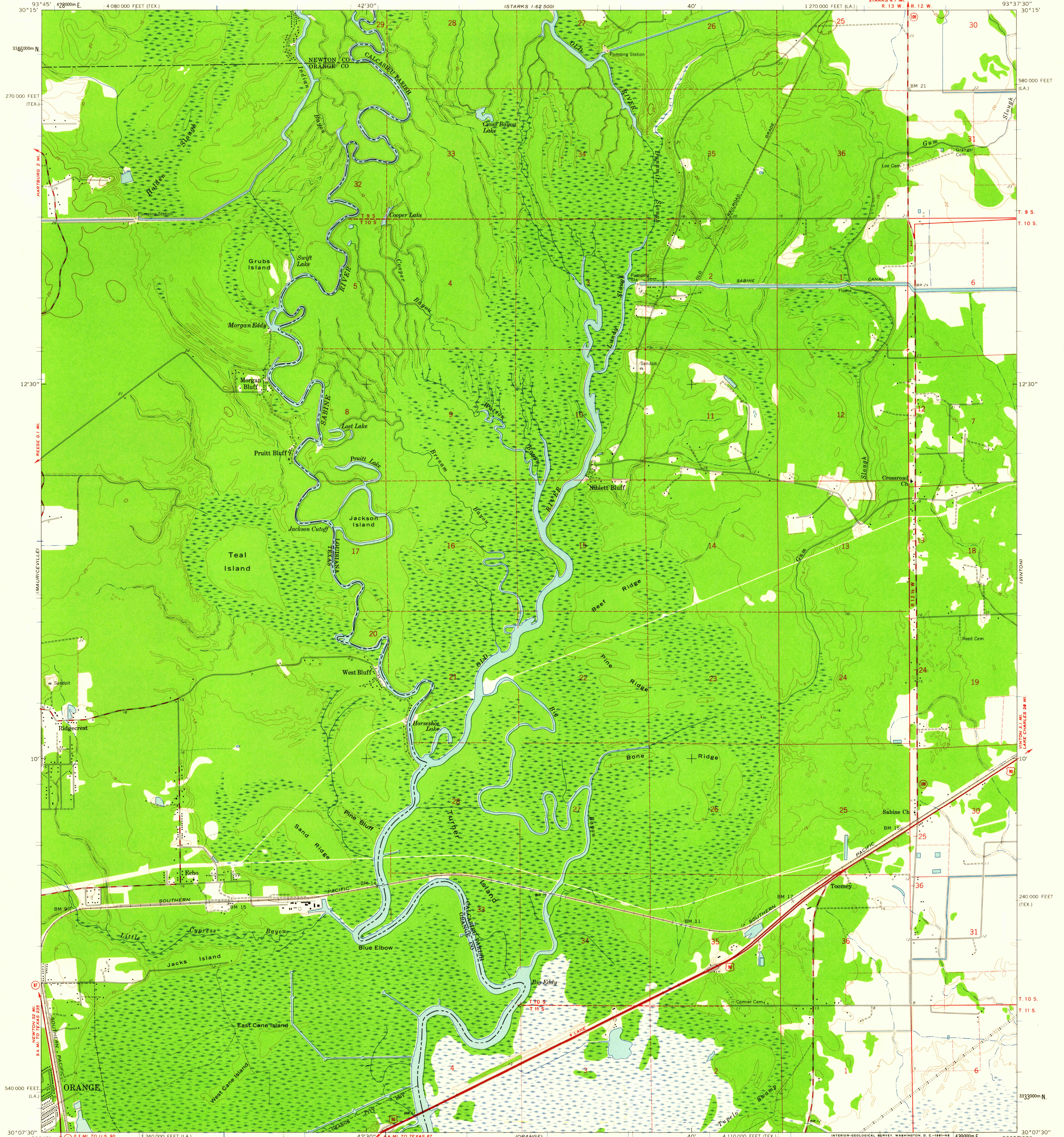


UNITED STATES
DEPARTMENT OF THE INTERIOR
GEOLOGICAL SURVEY

ECHO QUADRANGLE
LOUISIANA-TEXAS
7.5 MINUTE SERIES (TOPOGRAPHIC)
NW 1/4 ORANGE 15' QUADRANGLE

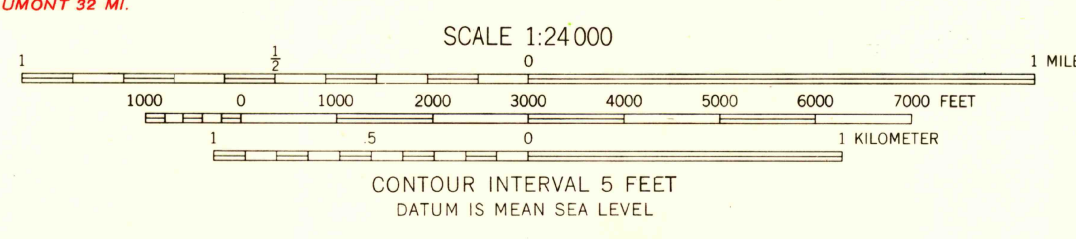
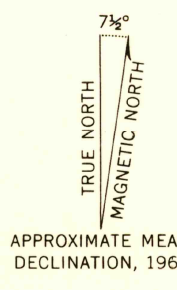


Mapped, edited, and published by the Geological Survey
Control by USGS and USC&GS

Culture and drainage in part compiled from aerial photographs taken 1959. Topography enlarged from 1:62 500-scale map of Orange quadrangle, 15 minute series. Original map by planetable surveys 1955. Revised 1960

Polyconic projection. 1927 North American datum
10,000-foot grids based on Louisiana coordinate system, south zone and Texas coordinate system, central zone
1000-meter Universal Transverse Mercator grid ticks, zone 15, shown in blue

Dashed land lines indicate approximate locations
Dotted land lines established by private survey for the State of Louisiana
Fine red dashed lines indicate selected fence and field lines where generally visible on aerial photographs. This information is unchecked



THIS MAP COMPLIES WITH NATIONAL MAP ACCURACY STANDARDS
FOR SALE BY U. S. GEOLOGICAL SURVEY, DENVER 25, COLORADO OR WASHINGTON 25, D. C.
AND BY THE STATE OF LOUISIANA, DEPARTMENT OF PUBLIC WORKS, BATON ROUGE 4, LOUISIANA
A FOLDER DESCRIBING TOPOGRAPHIC MAPS AND SYMBOLS IS AVAILABLE ON REQUEST

USCG Historical File Topographic Division

ROAD CLASSIFICATION	
Heavy-duty	Light-duty
Medium-duty	Unimproved dirt
U.S. Route	State Route



ECHO, LA.-TEX.
NW 1/4 ORANGE 15' QUADRANGLE
N 3007.5-W 9337.5/7.5

USGS
FILE COPY
TOPOGRAPHIC DIVISION

1960

SEP - 5 1960
2630