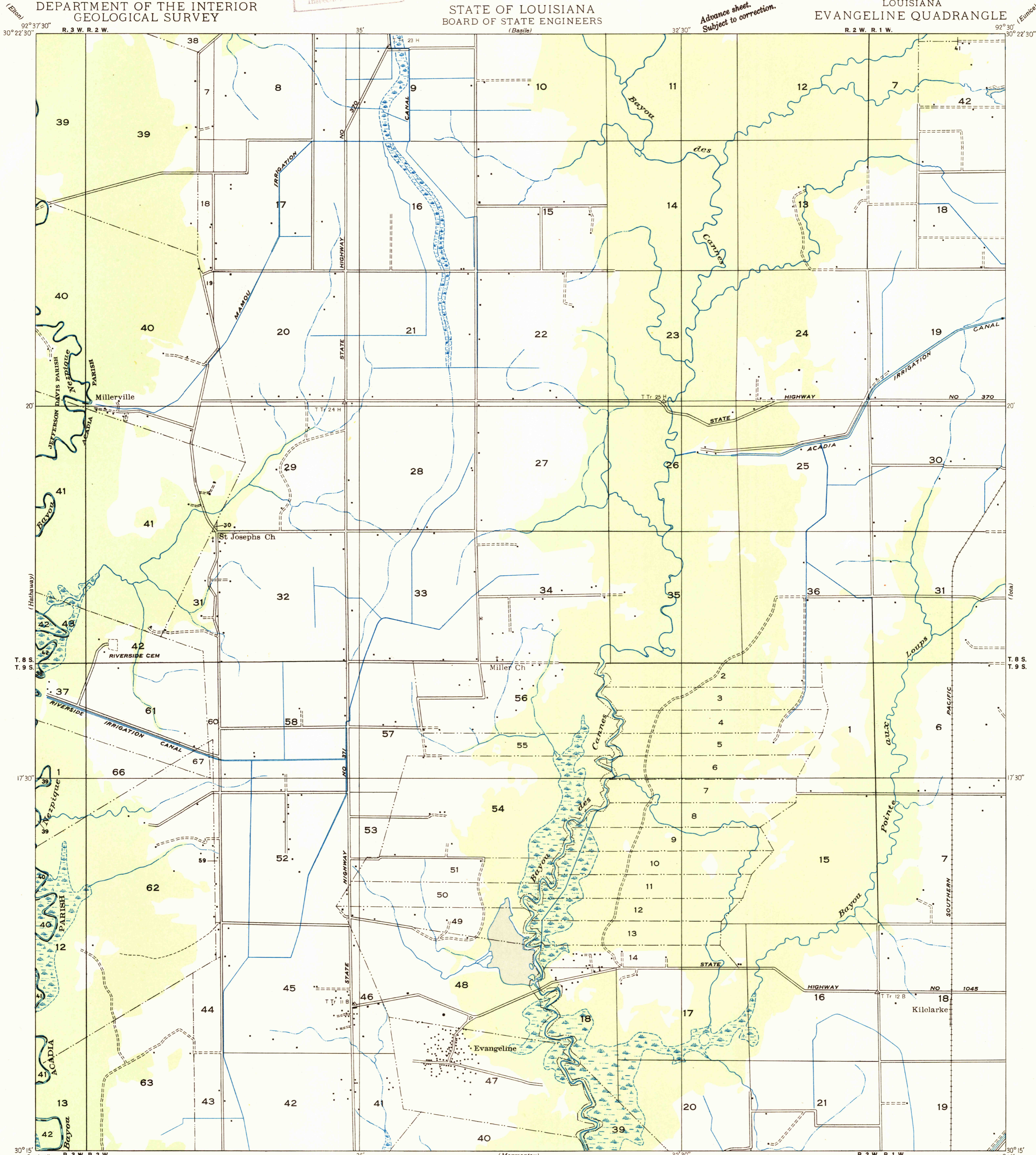


U.S.G.S.  
FILE COPY  
Inspection and Editing

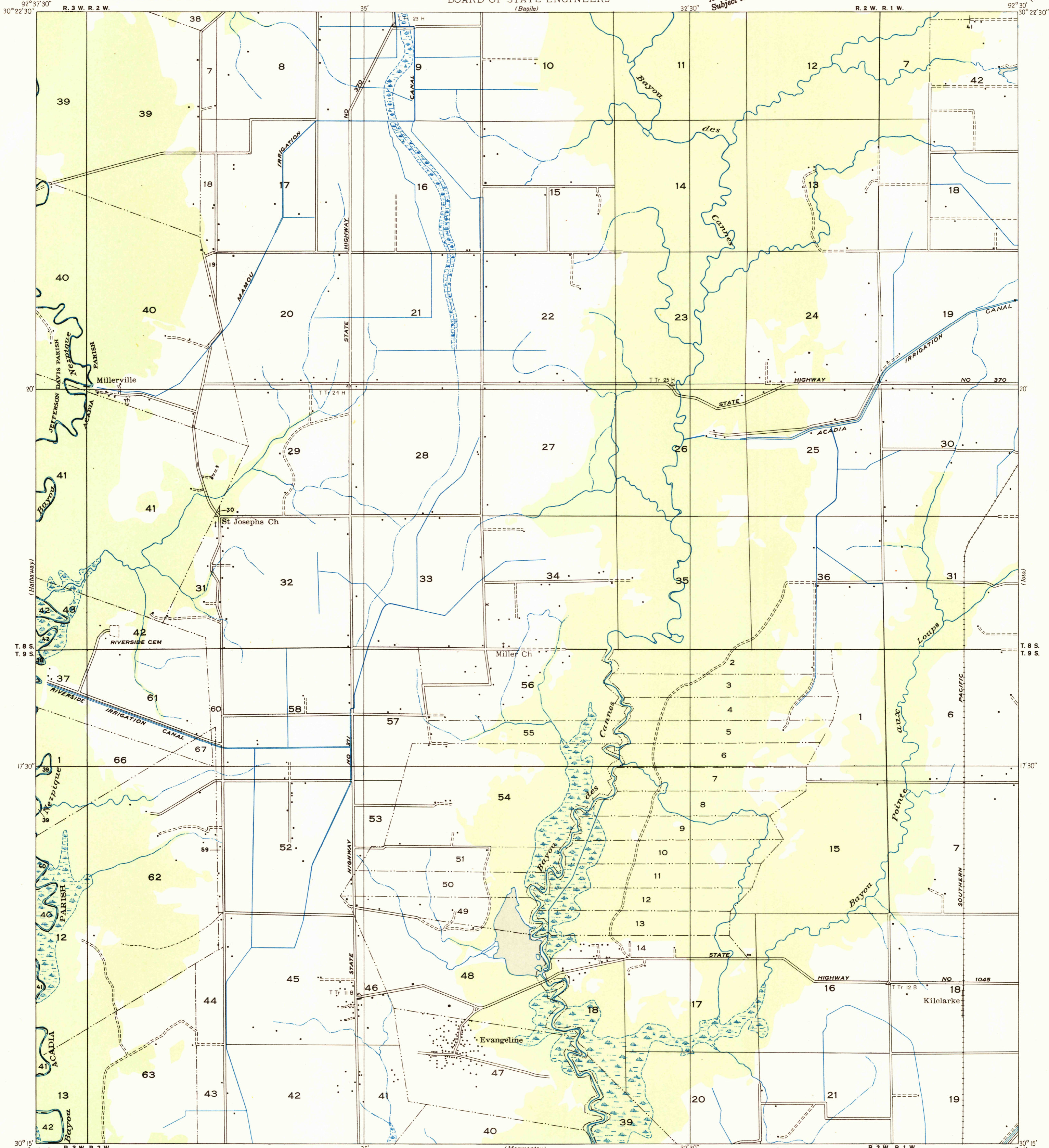
UNITED STATES  
DEPARTMENT OF THE INTERIOR  
GEOLOGICAL SURVEY

STATE OF LOUISIANA  
BOARD OF STATE ENGINEERS

LOUISIANA  
EVANGELINE QUADRANGLE

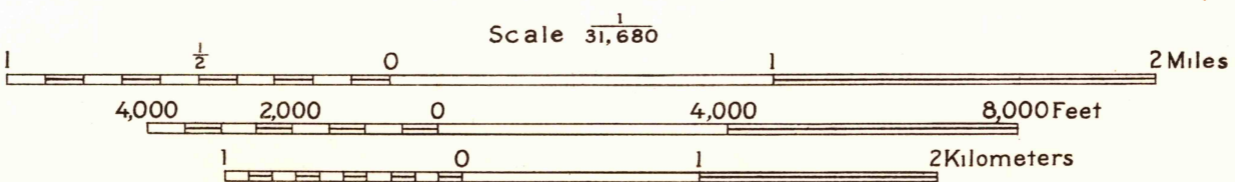


Advance sheet.  
Subject to correction.



Glenn S. Smith, Division Engineer  
Compiled by Geological Survey from aerial photographs  
Field examination in 1935

TRUE NORTH  
MAGNETIC NORTH  
APPROXIMATE MEAN DECLINATION, 1985



USGS  
Historical File  
Topographic Division  
FILE COPY  
Inspection and Editing

Polygonic projection. 1927 North American datum  
Land lines added from General Land Office  
records adjusted to natural features and control

EVANGELINE, LA.  
N 3015-W 9230/7.5

MAR 26 1947

625