

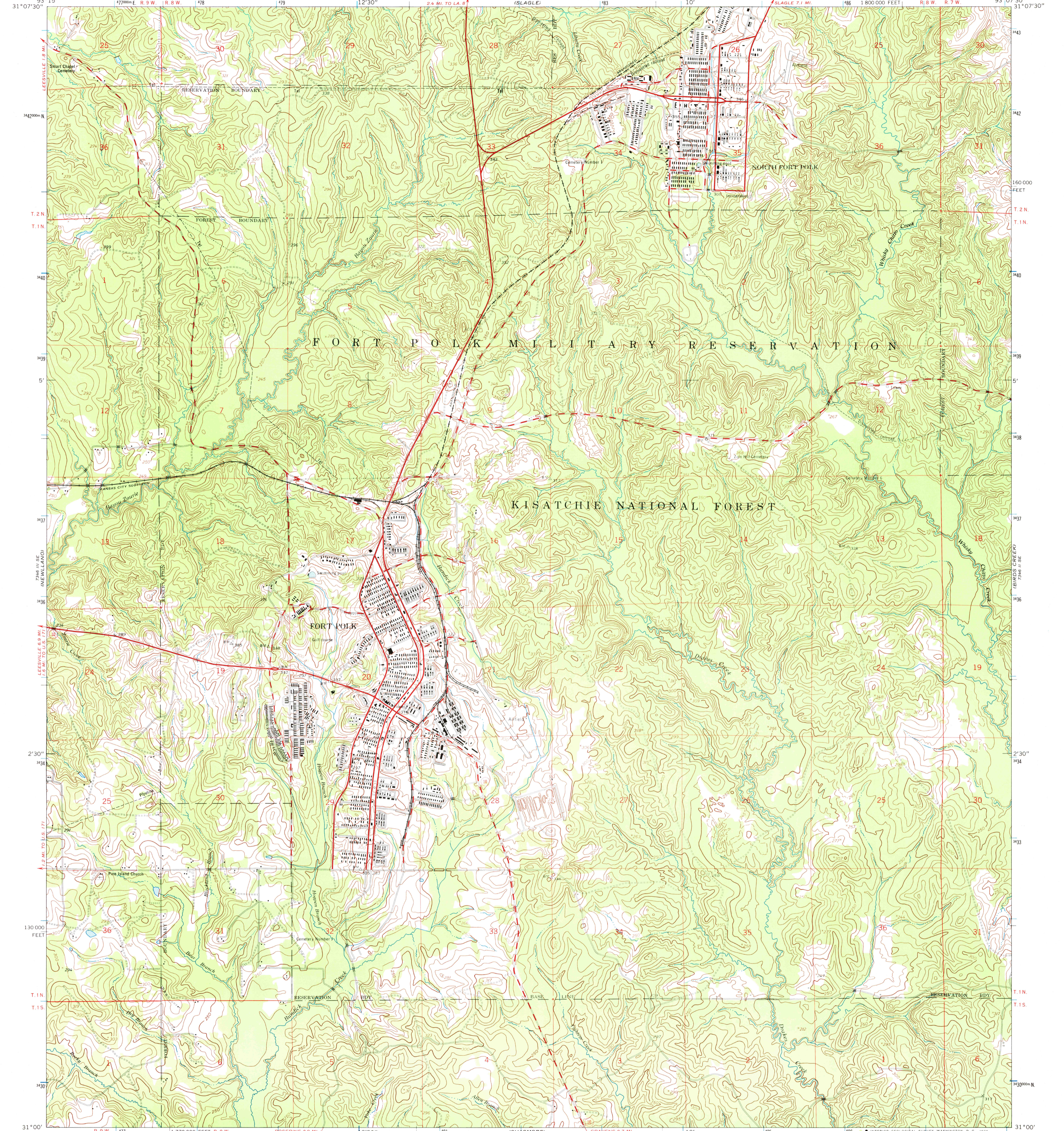
LEESVILLE 1.8 MI.

UNITED STATES  
DEPARTMENT OF THE INTERIOR  
GEOLOGICAL SURVEY

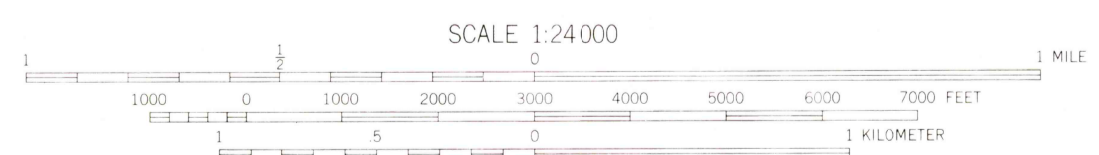
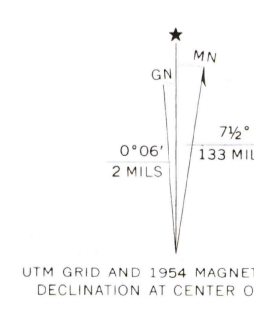
UNITED STATES  
DEPARTMENT OF THE ARMY  
CORPS OF ENGINEERS

FORT POLK QUADRANGLE  
LOUISIANA—VERNON PARISH  
7.5 MINUTE SERIES (TOPOGRAPHIC)  
SW/4 SLAGLE 15' QUADRANGLE

SLAGLE 7.1 MI.



Mapped by the Army Map Service  
Published for civil use by the Geological Survey  
Control by USGS, USC&GS, USCE, and Louisiana Geodetic Survey  
Topography from aerial photographs by photogrammetric methods  
Aerial photographs taken 1951. Field check 1954  
Polyconic projection. 1927 North American datum  
10,000-foot grid based on Louisiana coordinate system, north zone  
1000-meter Universal Transverse Mercator grid ticks,  
zone 15, shown in blue  
Unchecked elevations are shown in brown



SCALE 1:24 000  
CONTOUR INTERVAL 10 FEET  
DASHED LINES REPRESENT 5-FOOT CONTOURS  
DATUM IS MEAN SEA LEVEL



ROAD CLASSIFICATION

Heavy-duty	Light-duty
Medium-duty	Unimproved dirt
State Route	

THIS MAP COMPLIES WITH NATIONAL MAP ACCURACY STANDARDS  
FOR SALE BY U. S. GEOLOGICAL SURVEY, DENVER, COLORADO 80225 OR WASHINGTON, D. C. 20242,  
AND BY THE STATE OF LOUISIANA, DEPARTMENT OF PUBLIC WORKS, BATON ROUGE, LOUISIANA 70804  
A FOLDER DESCRIBING TOPOGRAPHIC MAPS AND SYMBOLS IS AVAILABLE ON REQUEST

FORT POLK, LA.  
SW/4 SLAGLE 15' QUADRANGLE  
N3100—W9307.5/7.5

1954  
AMS 7346 II SW—SERIES W885

JAN 1 1954  
1090