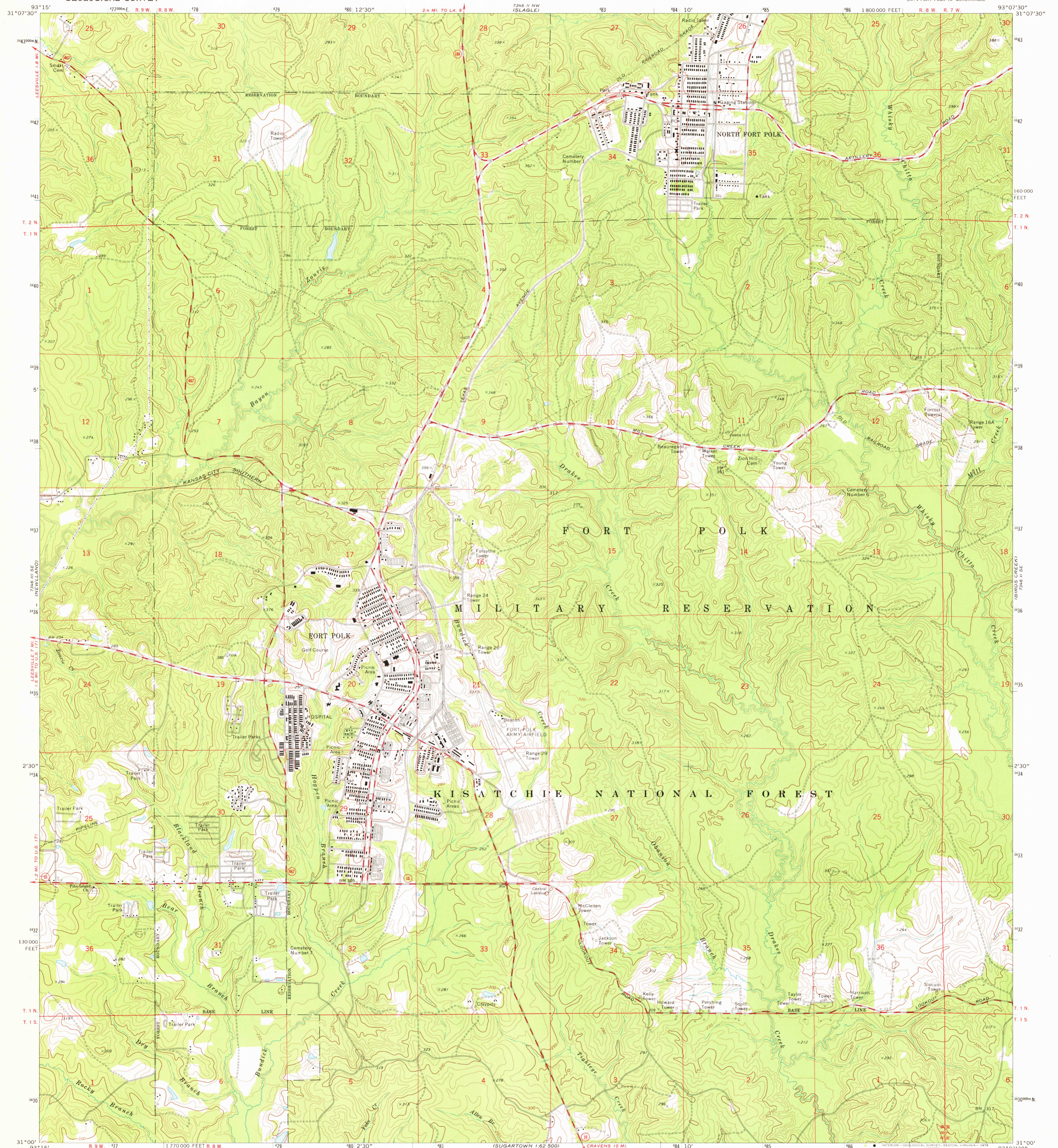


2.4 MI. TO LEESVILLE (LEESVILLE)

UNITED STATES
DEPARTMENT OF THE INTERIOR
GEOLOGICAL SURVEY

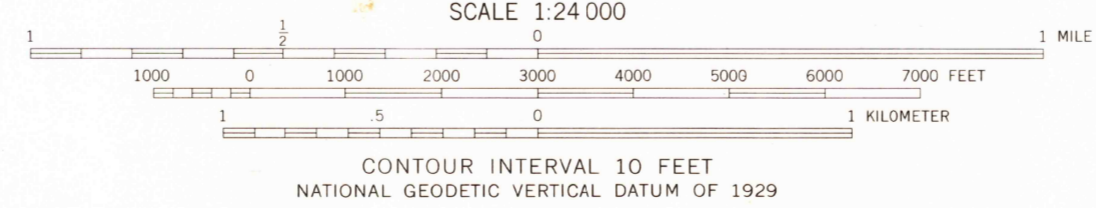
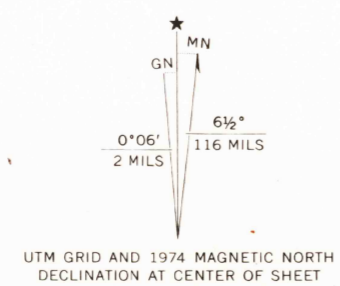
FORT POLK QUADRANGLE
LOUISIANA—VERNON PARISH
7.5 MINUTE SERIES (TOPOGRAPHIC)
SW 1/4 FORT POLK 15' QUADRANGLE

2.4 MI. TO LEESVILLE (LEESVILLE SOUTH)



2.4 MI. TO LEESVILLE (LEESVILLE)

Mapped by the Army Map Service
Edited and published by the Geological Survey
Revised in cooperation with Louisiana Department of Public Works
Control by USGS and USC&GS
Topography by photogrammetric methods from aerial photographs taken 1951. Field checked 1954. Revised from aerial photographs taken 1973. Field checked 1974
Polyconic projection. 1927 North American datum
10,000-foot grid based on Louisiana coordinate system, north zone
1000-meter Universal Transverse Mercator grid ticks, zone 15, shown in blue



THIS MAP COMPLIES WITH NATIONAL MAP ACCURACY STANDARDS
FOR SALE BY U. S. GEOLOGICAL SURVEY, DENVER, COLORADO 80225, OR RESTON, VIRGINIA 22092
AND BY THE STATE OF LOUISIANA, DEPARTMENT OF PUBLIC WORKS, BATON ROUGE, LOUISIANA 70804
A FOLDER DESCRIBING TOPOGRAPHIC MAPS AND SYMBOLS IS AVAILABLE ON REQUEST



ROAD CLASSIFICATION

Primary highway, hard surface	Light duty road, hard or improved surface
Secondary highway, hard surface	Unimproved road
Interstate Route	U. S. Route
	State Route

USGS
Historical File
Topographic Division
1974
AMS 7346 II SW—SERIES V885

FORT POLK, LA APR 09 1976
SW 1/4 FORT POLK 15' QUADRANGLE
N 3100—W 9307.5/7.5