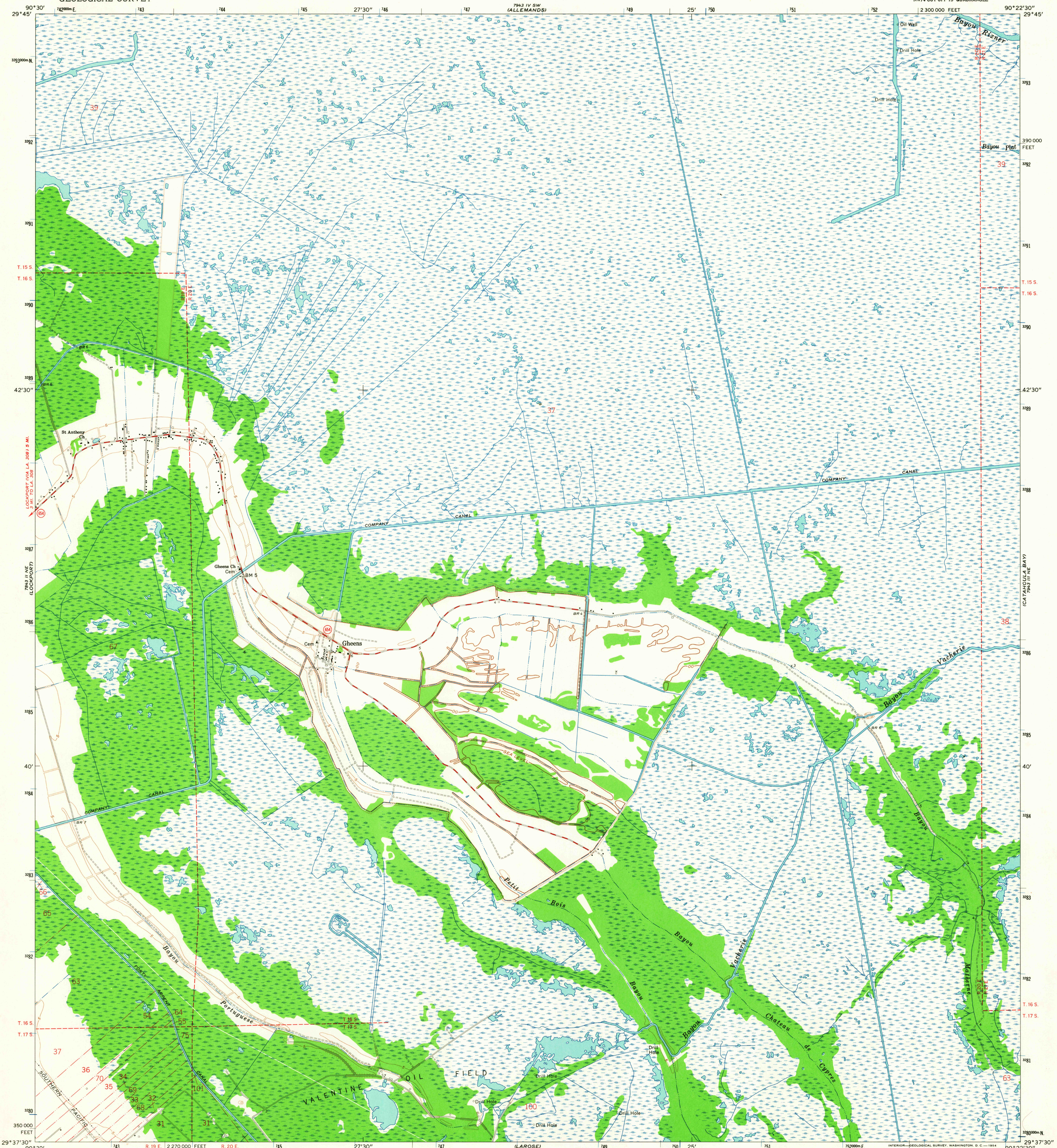
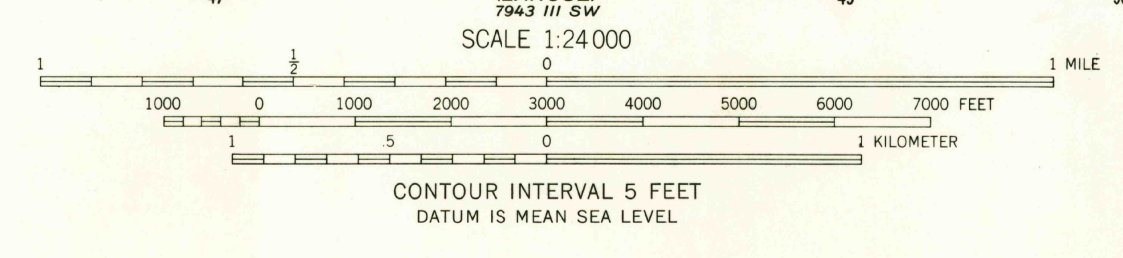
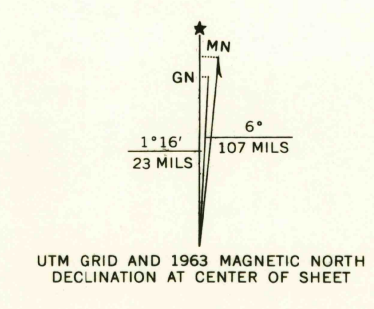


UNITED STATES
DEPARTMENT OF THE INTERIOR
GEOLOGICAL SURVEY

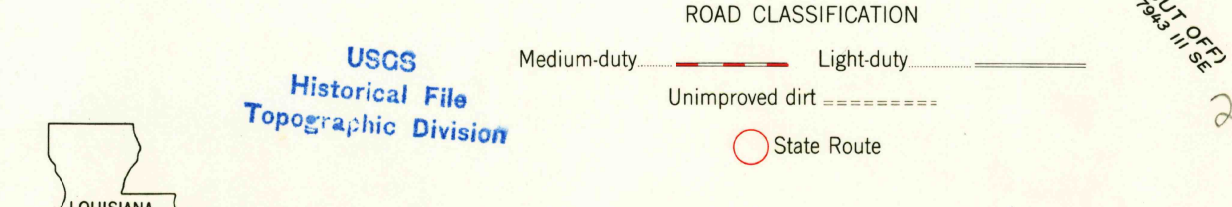
GHEENS QUADRANGLE
LOUISIANA-LAFORCHE PARISH
7.5 MINUTE SERIES (TOPOGRAPHIC)
NW/4 CUT OFF 15' QUADRANGLE



Mapped, edited, and published by the Geological Survey in cooperation with State of Louisiana Department of Public Works Control by USGS and USC&GS
Planimetry by photogrammetric methods from aerial photographs taken 1962. Topography by planetable surveys 1963
Polyconic projection. 1927 North American datum 10,000-foot grid based on Louisiana coordinate system, south zone 1000-meter Universal Transverse Mercator grid ticks, zone 15, shown in blue
Where omitted, land lines have not been established



THIS MAP COMPLIES WITH NATIONAL MAP ACCURACY STANDARDS FOR SALE BY U.S. GEOLOGICAL SURVEY, DENVER 25, COLORADO OR WASHINGTON 25, D.C. AND BY THE STATE OF LOUISIANA, DEPARTMENT OF PUBLIC WORKS, BATON ROUGE 4, LOUISIANA A FOLDER DESCRIBING TOPOGRAPHIC MAPS AND SYMBOLS IS AVAILABLE ON REQUEST



U.S.G.S.
FILE COPY
TOPOGRAPHIC DIVISION

GHEENS, LA.
NW/4 CUT OFF 15' QUADRANGLE
N2937.5—W9022.5/7.5
1963
AMS 7943 III NW—SERIES V885

APR 28 1964