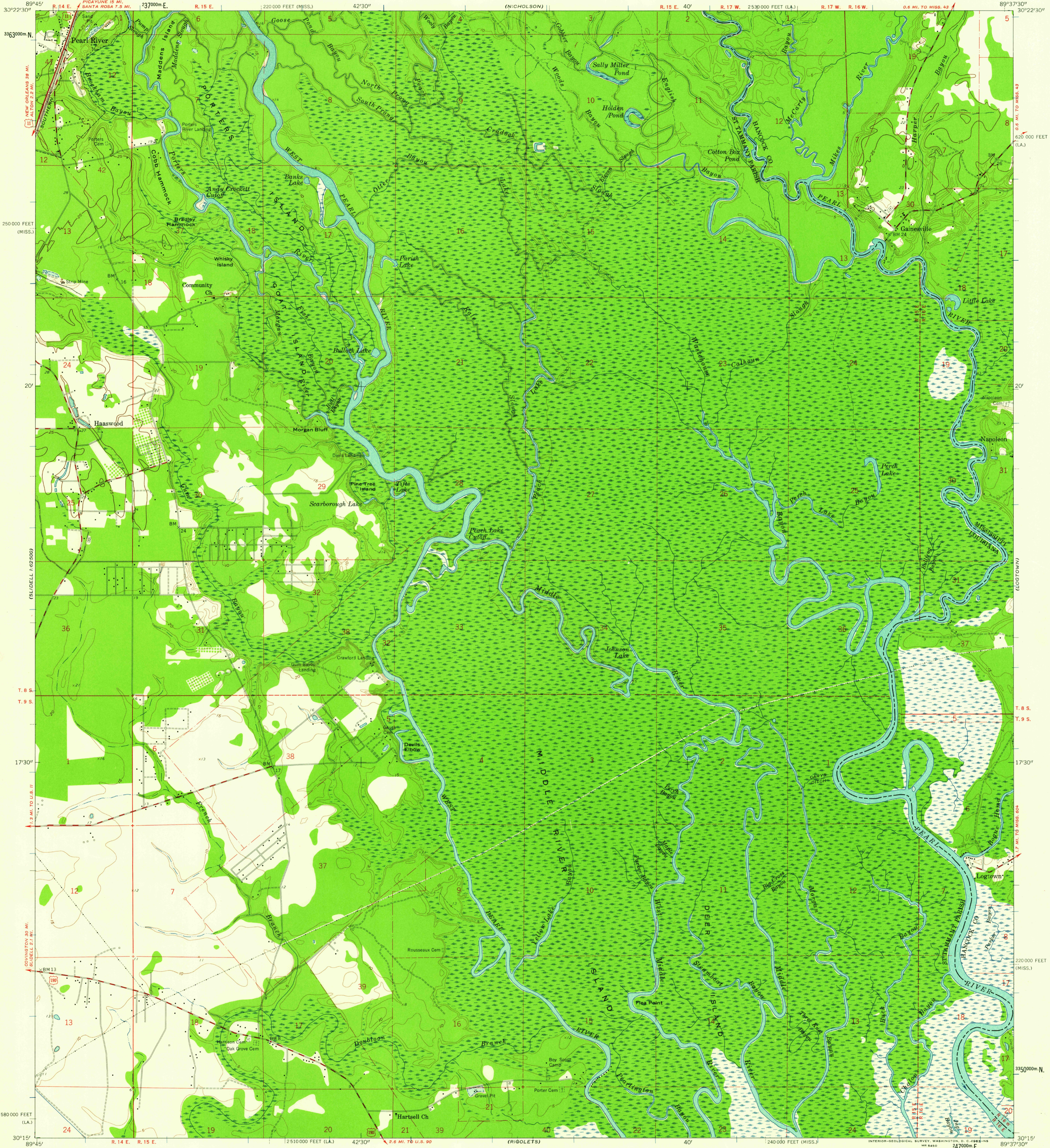


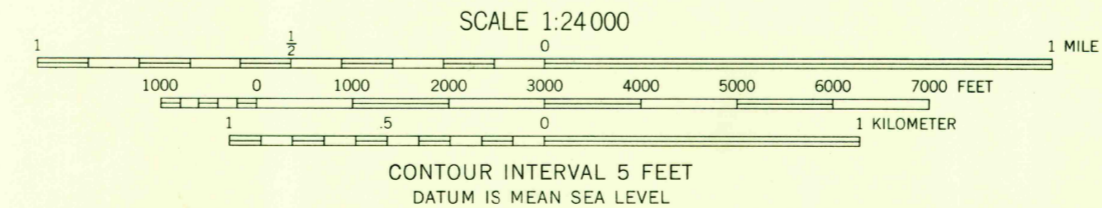
UNITED STATES
DEPARTMENT OF THE INTERIOR
GEOLOGICAL SURVEY

HAASWOOD QUADRANGLE
LOUISIANA - MISSISSIPPI
7.5 MINUTE SERIES (TOPOGRAPHIC)
SW 1/4 NICHOLSON 15' QUADRANGLE



Mapped, edited, and published by the Geological Survey
Control by USGS and USC&GS
Culture and drainage in part compiled from aerial photographs taken 1954. Topography by planetable surveys 1955 and 1957-1959
Polyconic projection, 1927 North American datum
10,000-foot grids based on Louisiana coordinate system, south zone, and Mississippi coordinate system, east zone
1000-meter Universal Transverse Mercator grid ticks, zone 16, shown in blue
Dashed land lines indicate approximate locations

APPROXIMATE MEAN DECLINATION, 1959
TRUE NORTH
MAGNETIC NORTH



USGS
Historical File
Topographic Division
ROAD CLASSIFICATION
Heavy-duty ——— Light-duty ———
Medium-duty ——— Unimproved dirt ———
U.S. Route



THIS MAP COMPLIES WITH NATIONAL MAP ACCURACY STANDARDS
FOR SALE BY U. S. GEOLOGICAL SURVEY, DENVER 25, COLORADO OR WASHINGTON 25, D. C.
AND BY THE STATE OF LOUISIANA, DEPARTMENT OF PUBLIC WORKS, BATON ROUGE 4, LOUISIANA
A FOLDER DESCRIBING TOPOGRAPHIC MAPS AND SYMBOLS IS AVAILABLE ON REQUEST

HAASWOOD, LA. - MISS.
SW 1/4 NICHOLSON 15' QUADRANGLE
N 3015 - W 8937.5/7.5
1959

6115