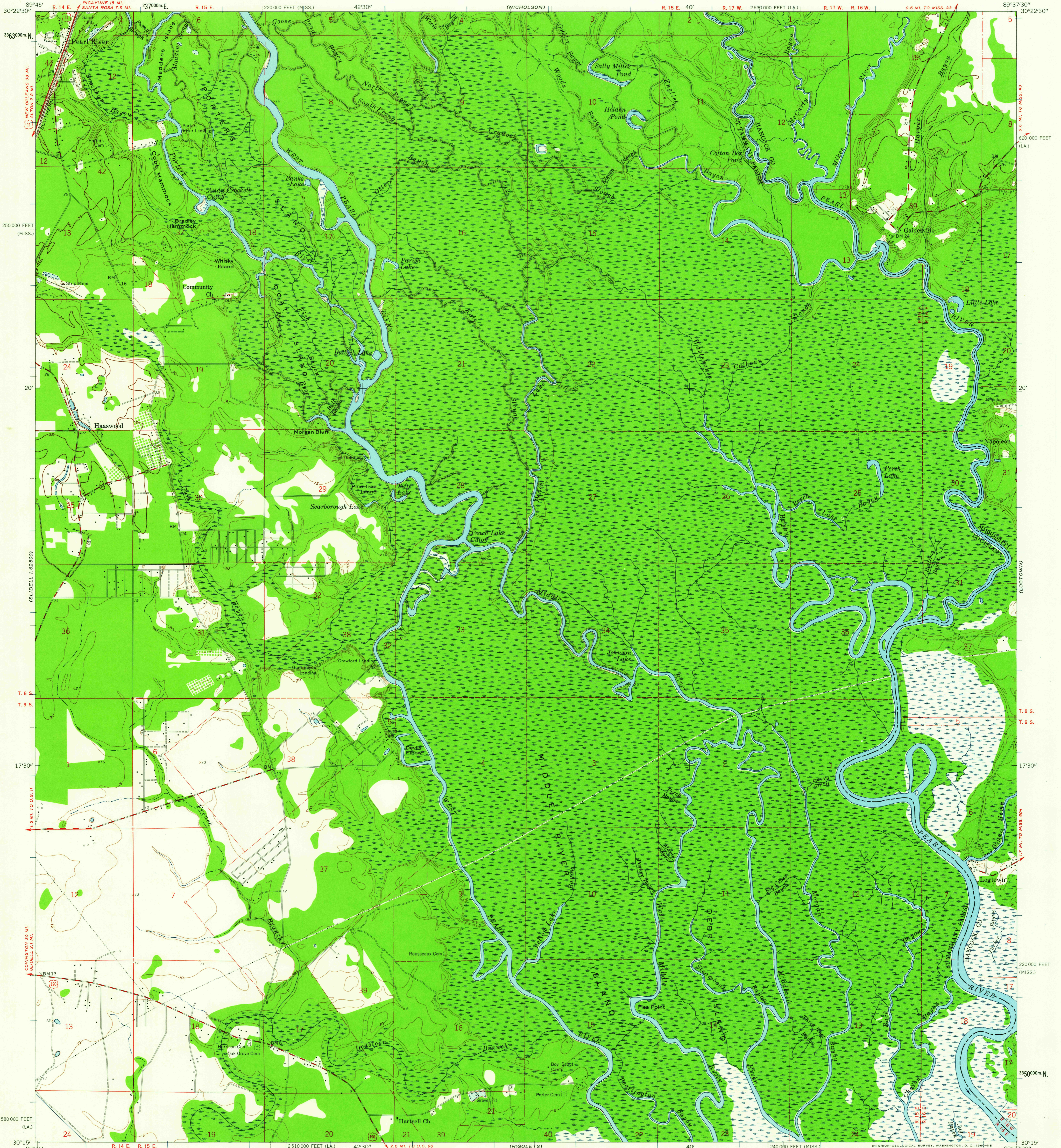


UNITED STATES
DEPARTMENT OF THE INTERIOR
GEOLOGICAL SURVEY

HAASWOOD QUADRANGLE
LOUISIANA—MISSISSIPPI
7.5 MINUTE SERIES (TOPOGRAPHIC)
SW/4 NICHOLSON 15' QUADRANGLE



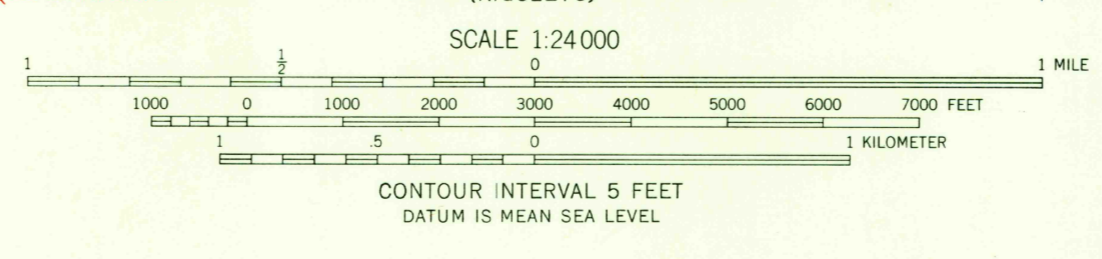
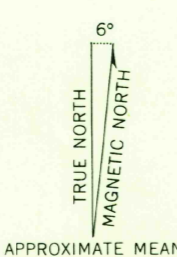
Mapped, edited, and published by the Geological Survey

Control by USGS and USC&GS

Culture and drainage in part compiled from aerial photographs taken 1954. Topography by planimetric surveys 1955 and 1957-1959

Polycyclic projection. 1927 North American datum 10,000-foot grids based on Louisiana coordinate system, south zone, and Mississippi coordinate system, east zone 1000-meter Universal Transverse Mercator grid ticks, zone 16, shown in blue

Dashed land lines indicate approximate locations



CONTOUR INTERVAL 5 FEET
DATUM IS MEAN SEA LEVEL

USGS
Historical File
Topographic Division

ROAD CLASSIFICATION
Heavy-duty ——— Light-duty ———
Medium-duty ——— Unimproved dirt - - - - -
U.S. Route



U.S.G.S.
FILE COPY
TOPOGRAPHIC DIVISION

HAASWOOD, LA.—MISS.
SW/4 NICHOLSON 15' QUADRANGLE
N 3015—W 8937.5/7.5

1959

JUN - 2 1959

2040