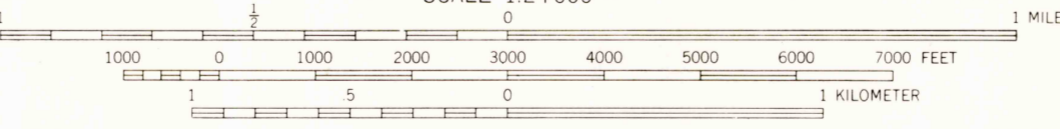
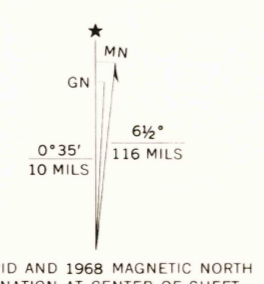


Mapped by the U.S. Coast and Geodetic Survey
Edited and published by the Geological Survey
Revised in cooperation with Louisiana Department of Public Works
Control by USC&GS
Planimetry by photogrammetric methods from aerial photographs
taken 1948. Topography by planetable surveys 1949
Revised by the Geological Survey 1968
Selected hydrographic data compiled from USC&GS Charts 1276 (1967) and
1277 (1966). This information is not intended for navigational purposes
Polyconic projection. 1927 North American datum
10,000-foot grid based on Louisiana coordinate system, south zone
1000-meter Universal Transverse Mercator grid ticks, zone 15, shown in blue
Where omitted, land lines have not been established
or are not shown because of insufficient data
All or part of this quadrangle lies within a subsidence area



CONTOUR INTERVAL 5 FEET
DATUM IS MEAN SEA LEVEL
DEPTH CURVES AND SOUNDINGS IN FEET—DATUM IS MEAN LOW WATER
SHORELINE SHOWN REPRESENTS THE APPROXIMATE LINE OF MEAN HIGH WATER
THE MEAN RANGE OF TIDE IS APPROXIMATELY 1 FOOT

THIS MAP COMPLIES WITH NATIONAL MAP ACCURACY STANDARDS
FOR SALE BY U.S. GEOLOGICAL SURVEY, DENVER, COLORADO 80225, OR WASHINGTON, D.C. 20242
AND BY THE STATE OF LOUISIANA, DEPARTMENT OF PUBLIC WORKS, BATON ROUGE, LOUISIANA 70804
A FOLDER DESCRIBING TOPOGRAPHIC MAPS AND SYMBOLS IS AVAILABLE ON REQUEST



USGS NMU HISTORICAL MAP
SEP 3 - 1985
REC'D FILE COPY

ROAD CLASSIFICATION
Medium-duty ——— Light-duty ———
Unimproved dirt =-----
State Route ○
HAMMOCK LAKE, LA.
NE/4 MARSH ISLAND 15' QUADRANGLE
N2937.5—W9145.7.5
1968
AMS 7643 III NE—SERIES V885