

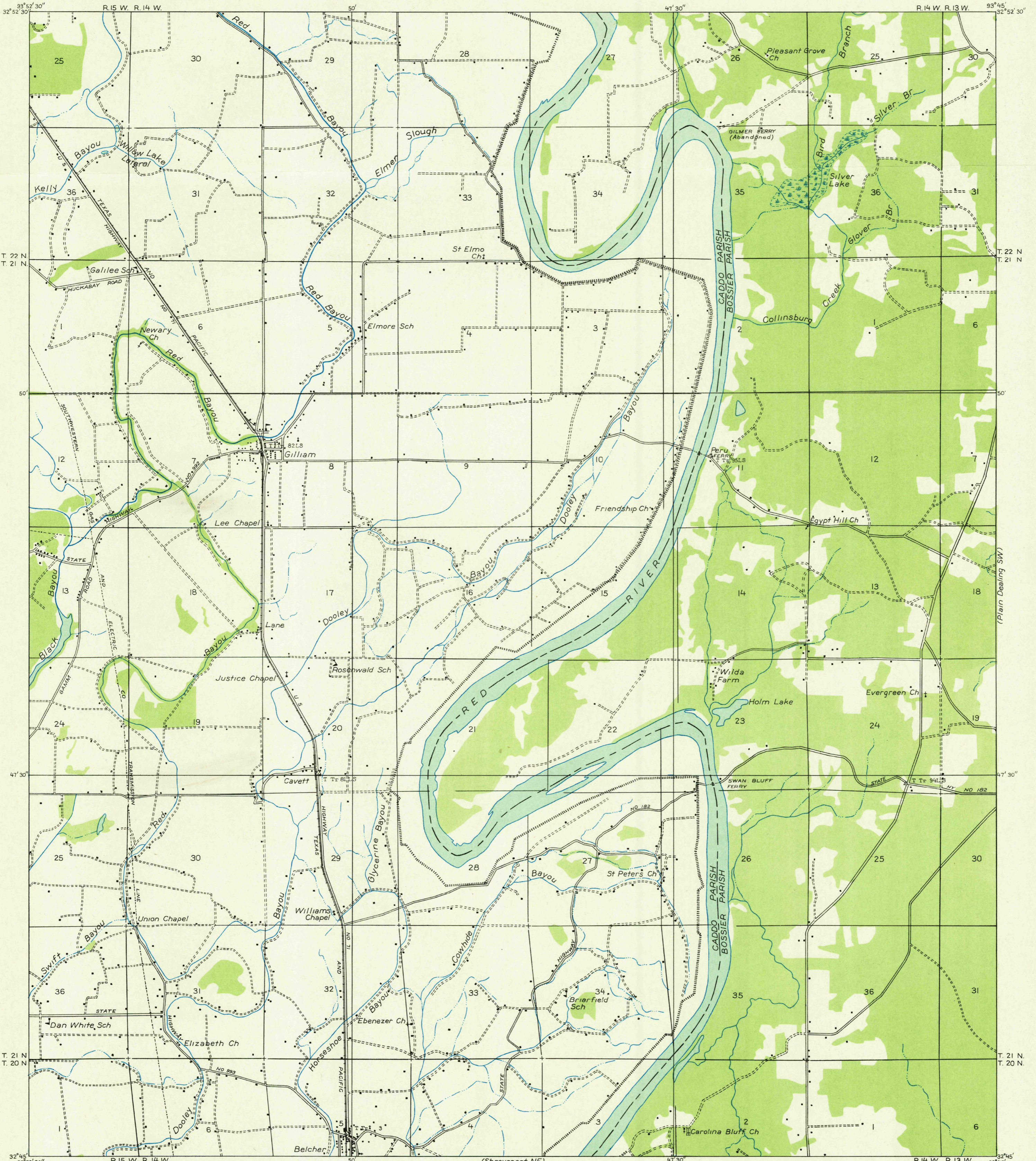
DEPARTMENT OF THE INTERIOR
U. S. GEOLOGICAL SURVEY

STATE OF LOUISIANA
BOARD OF STATE ENGINEERS
HARRY JACOBS, CHIEF ENGINEER

LOUISIANA
HOSSTON QUADRANGLE
(S E QUARTER)

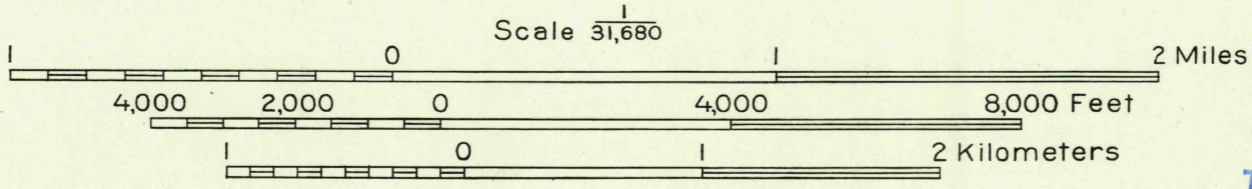
Advance sheet
Subject to correction

(Plain Dealing NW)



Glenn S. Smith, Division Engineer
Compiled by U. S. Geological Survey after field examination
of aerial photographs taken by Air Corps, U. S. Army
Control by U. S. Geological Survey
Field examination in 1932

TRUE NORTH
MAGNETIC NORTH
APPROXIMATE MEAN
DECLINATION, 1932



USGS
Historical File
Topographic Division

Polygonic projection. 1927 North American datum
Land lines added from General Land Office
records adjusted to natural features and control
Township lines
Township lines, adjustment indefinite
Section lines, adjustment indefinite
Section lines, adjustment indefinite
Grant lines
Grant lines, adjustment indefinite
Ditches
Shallow ditches

HOSSTON, LA.
(S E)

(Plain Dealing SW)

(Bossier NW)