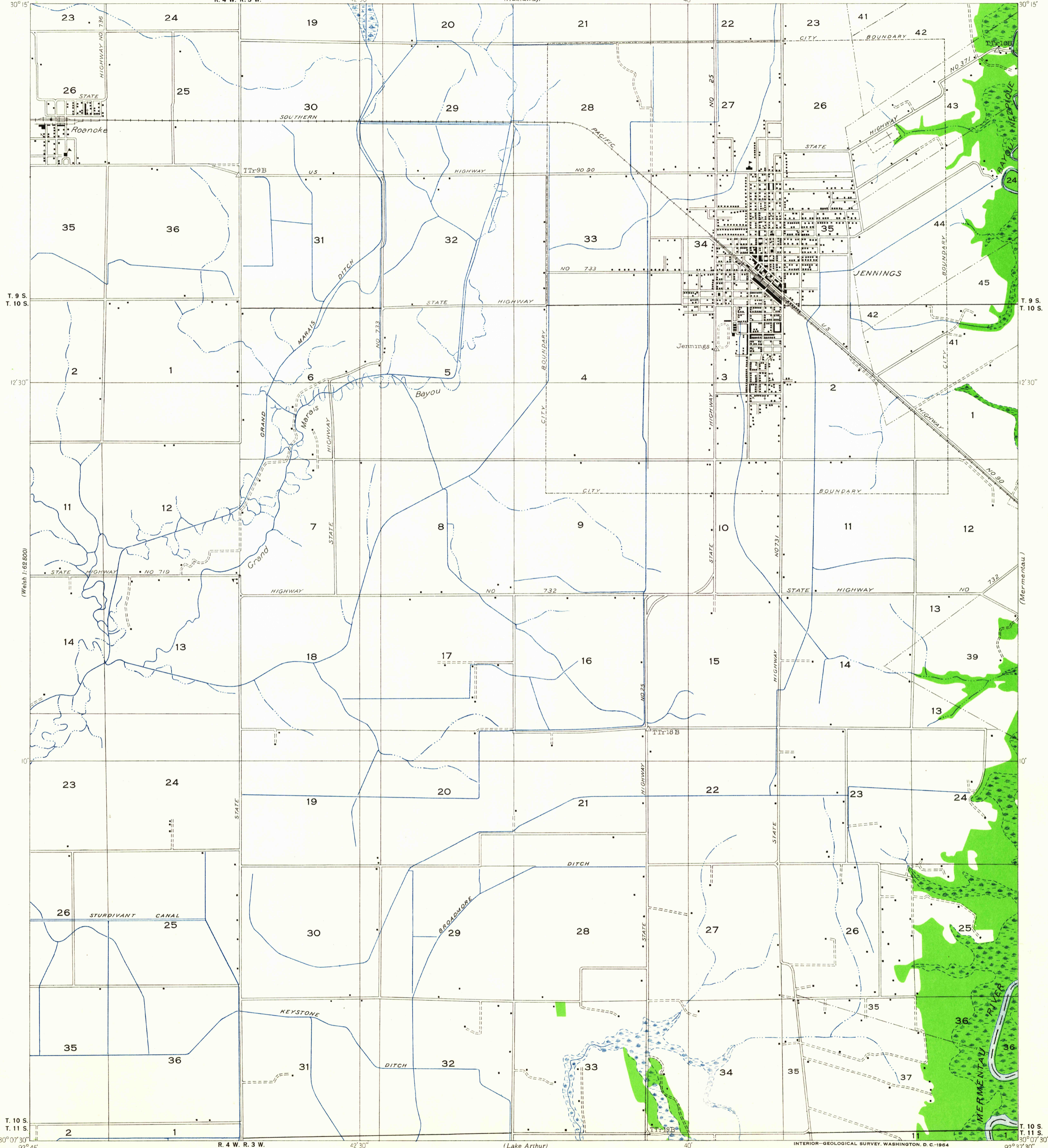
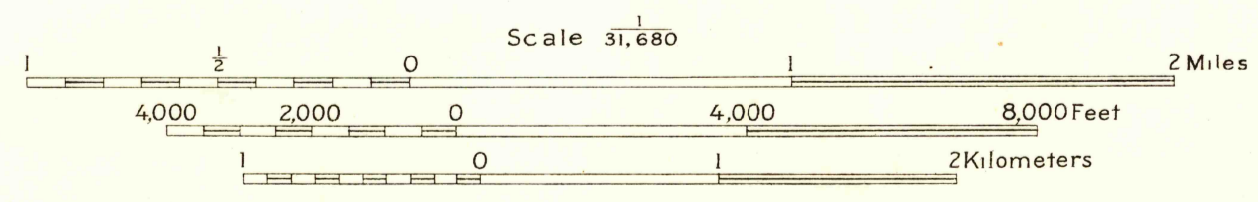


Advance sheet.  
Subject to correction.



Glenn S. Smith, Division Engineer  
Compiled by U. S. Geological Survey after field examination  
of aerial photographs taken by Air Corps, U. S. Army  
Control by U. S. Geological Survey and U. S. Coast and Geodetic Survey  
Field examination in 1933

TRUE NORTH  
MAGNETIC NORTH  
APPROXIMATE MEAN  
DECLINATION, 1933



USGS  
Historical File  
Topographic Division

Interior-Geological Survey, Washington, D. C. 1964  
Polyconic projection, 1927 North American datum  
Land lines added from General Land Office  
records adjusted to natural features and control

Township lines	---
Township lines, adjustment indefinite	- - - -
Section lines	---
Section lines, adjustment indefinite	- - - -
Grant lines	---
Grant lines, adjustment indefinite	- - - -
Ditches	---
Shallow ditches	---

FOR SALE BY U. S. GEOLOGICAL SURVEY, DENVER 25, COLORADO OR WASHINGTON 25, D. C.  
AND BY THE STATE OF LOUISIANA, DEPARTMENT OF PUBLIC WORKS, BATON ROUGE 4, LOUISIANA  
A FOLDER DESCRIBING TOPOGRAPHIC MAPS AND SYMBOLS IS AVAILABLE ON REQUEST

JENNINGS, LA  
N 30075-W9237.5/7.5

Jul 20, 1954