

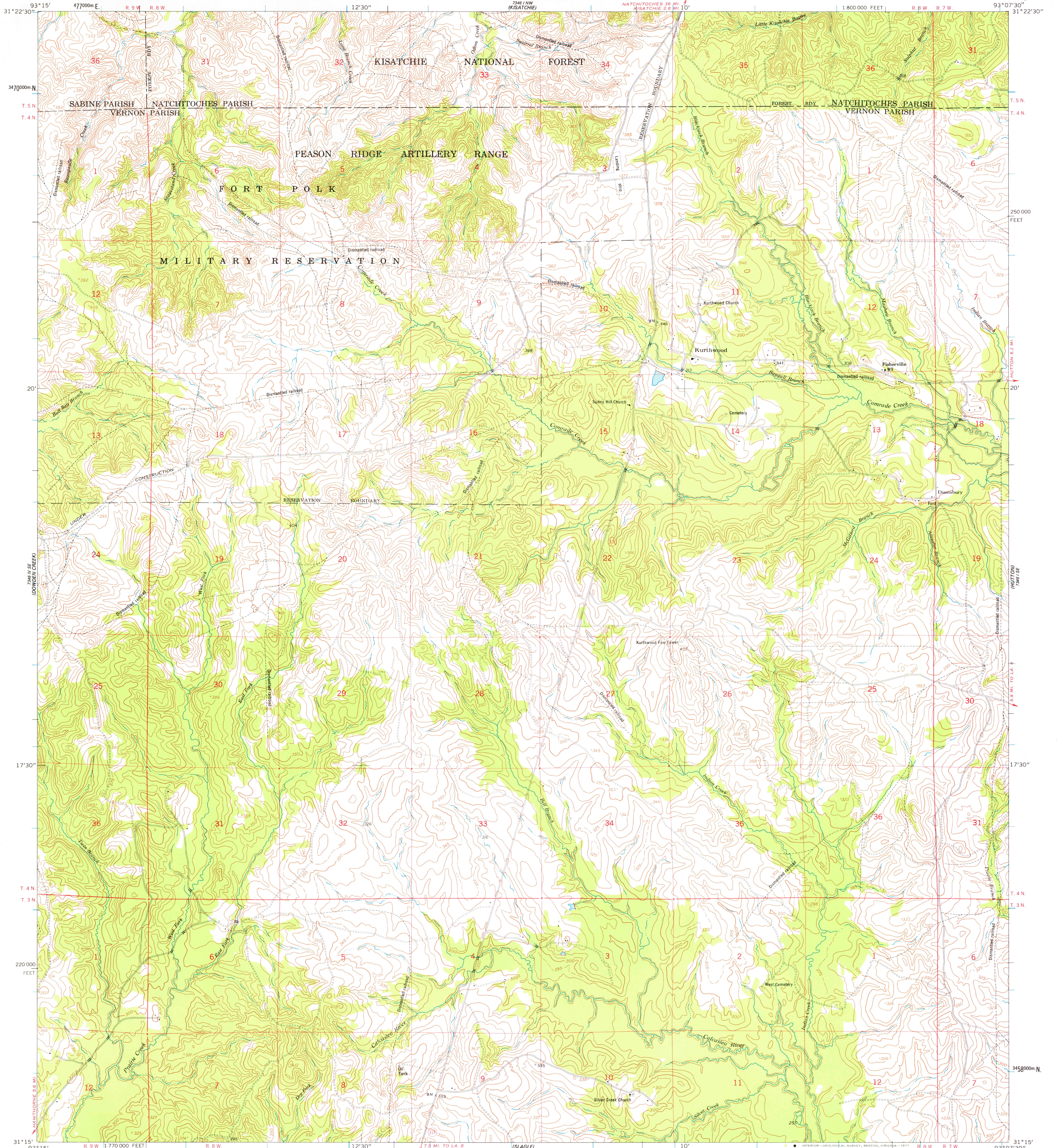
7346 I NW
KISATCHEE

UNITED STATES
DEPARTMENT OF THE INTERIOR
GEOLOGICAL SURVEY

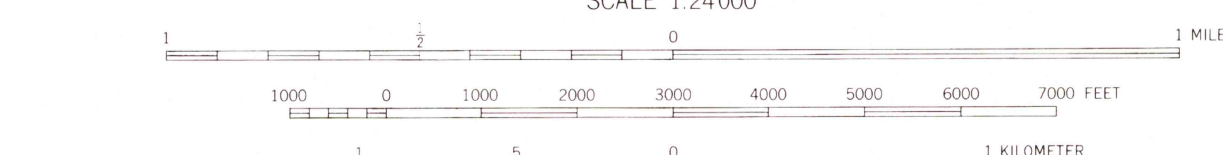
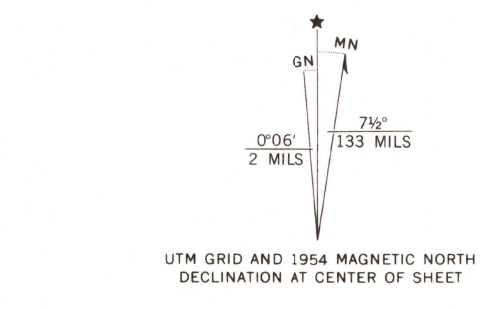
UNITED STATES
DEPARTMENT OF THE ARMY
CORPS OF ENGINEERS

KURTHWOOD QUADRANGLE
LOUISIANA
7.5 MINUTE SERIES (TOPOGRAPHIC)

7346 I SW
KISATCHEE



Mapped by the Army Map Service
Published for civil use by the Geological Survey
Control by USGS, USC&GS, USCE, and Louisiana Geodetic Survey
Topography from aerial photographs by photogrammetric methods
Aerial photographs taken 1953. Field check 1954
Polyconic projection. 1927 North American datum
10,000-foot grid based on Louisiana coordinate system, north zone
1000-meter Universal Transverse Mercator grid ticks,
zone 15, shown in blue
Unchecked elevations are shown in brown
Map photoinspected 1972
No major culture or drainage changes observed



CONTOUR INTERVAL 10 FEET
DASHED LINES REPRESENT 5-FOOT CONTOURS
NATIONAL GEODETIC VERTICAL DATUM OF 1929



ROAD CLASSIFICATION
Light-duty ——— Unimproved dirt - - - - -
State Route ○

THIS MAP COMPLIES WITH NATIONAL MAP ACCURACY STANDARDS
FOR SALE BY U. S. GEOLOGICAL SURVEY, DENVER, COLORADO 80225, OR RESTON, VIRGINIA 22092
AND STATE OF LOUISIANA, DEPARTMENT OF PUBLIC WORKS, BATON ROUGE, LOUISIANA 70804
A FOLDER DESCRIBING TOPOGRAPHIC MAPS AND SYMBOLS IS AVAILABLE ON REQUEST

USGS
Historical File
Topographic Division

KURTHWOOD, LA.
N3115—W9307.5/7.5
1954
PHOTOINSPECTED 1972
AMS 7346 I SW—SERIES V885

1800
MAR 15 1977