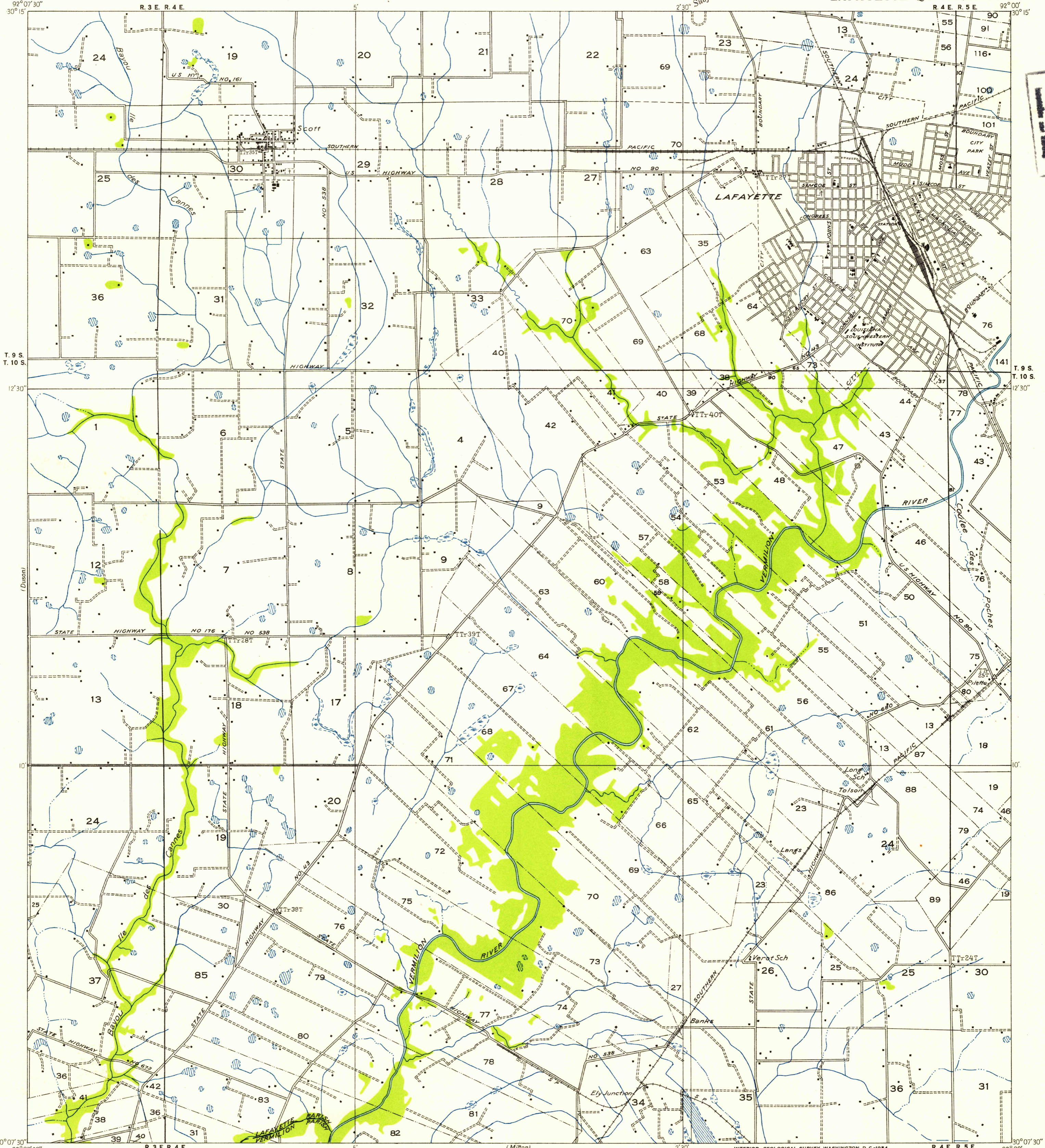


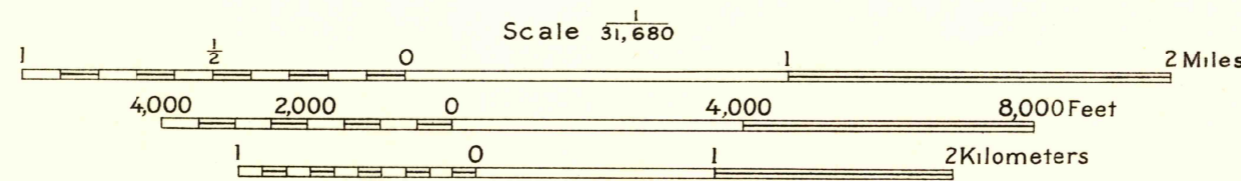
Advance sheet  
Subject to correction



FILE COPY

Glenn S. Smith, Division Engineer  
Compiled by U. S. Geological Survey after field examination  
of aerial photographs taken by Air Corps, U. S. Army  
Control by U. S. Geological Survey and U. S. Coast and Geodetic Survey  
Field examination in 1934

TRUE NORTH  
MAGNETIC NORTH  
APPROXIMATE MEAN  
DECLINATION, 1994



USGS  
Historical File  
Topographic Division

FILE COPY

Polyconic projection. 1927 North American datum  
Land lines added from General Land Office  
records adjusted to natural features and control  
Township lines, adjustment indefinite  
Section lines  
Section lines, adjustment indefinite  
Grant lines  
Grant lines, adjustment indefinite  
Ditches  
Shallow ditches

LAFAYETTE, LA.

N 3007.5-W 9200/7.5

AUG 3 1954

1105