

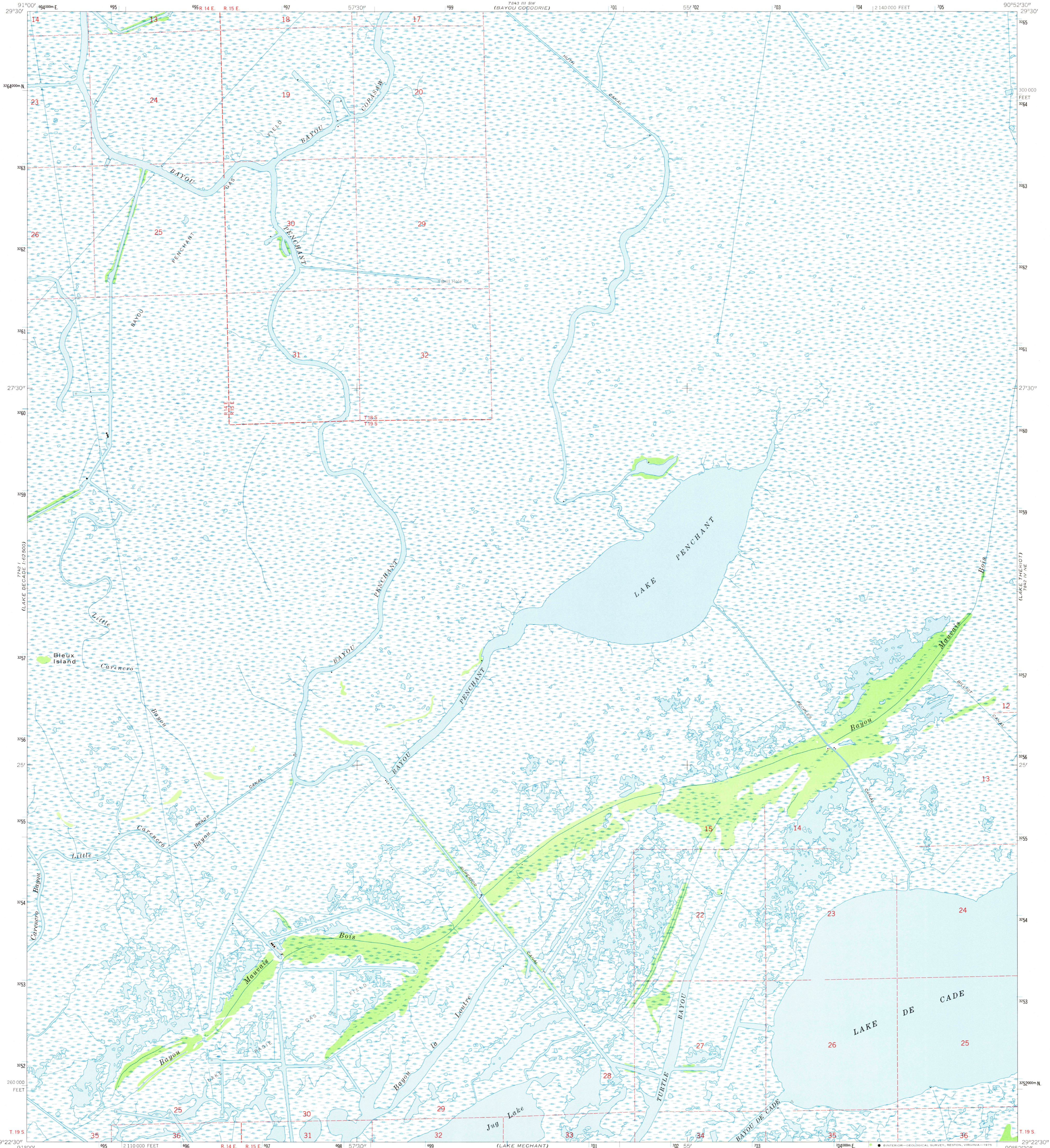
743 N
MORAN CITY

UNITED STATES
DEPARTMENT OF THE INTERIOR
GEOLOGICAL SURVEY

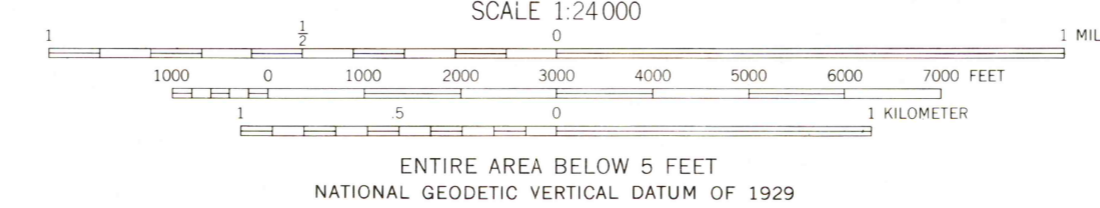
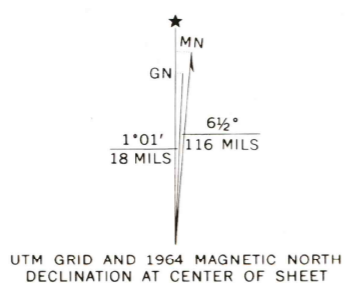
STATE OF LOUISIANA
DEPARTMENT OF PUBLIC WORKS
BATON ROUGE
7843 IV SW
(BAYOU COCODRIE)

LAKE PENCHANT QUADRANGLE
LOUISIANA—TERREBONNE PARISH
7.5 MINUTE SERIES (TOPOGRAPHIC)
NW/4 BAYOU DU LARGE 15' QUADRANGLE

784 IV SE
(HUPPRE 93)



Mapped, edited, and published by the Geological Survey
Control by USGS and USC&GS
Planimetry by photogrammetric methods from aerial photographs taken 1963. Topography by planetable surveys 1964
Polyconic projection. 1927 North American datum
10,000-foot grid based on Louisiana coordinate system, south zone
1000-meter Universal Transverse Mercator grid ticks, zone 15, shown in blue
Where omitted, land lines have not been established



THIS MAP COMPLIES WITH NATIONAL MAP ACCURACY STANDARDS
FOR SALE BY U. S. GEOLOGICAL SURVEY, DENVER, COLORADO 80225, OR RESTON, VIRGINIA 22092
AND BY THE STATE OF LOUISIANA, DEPARTMENT OF PUBLIC WORKS, BATON ROUGE, LOUISIANA 70804
A FOLDER DESCRIBING TOPOGRAPHIC MAPS AND SYMBOLS IS AVAILABLE ON REQUEST



ROAD CLASSIFICATION
No roads or trails in this area

LAKE PENCHANT, LA.
NW/4 BAYOU DU LARGE 15' QUADRANGLE
N2922.5—W9052.5/7.5

USGS
HISTORICAL FILE
TOPOGRAPHIC DIVISION

1964
AMS 7842 IV NW—SERIES V885

21650

JUN 20 1975