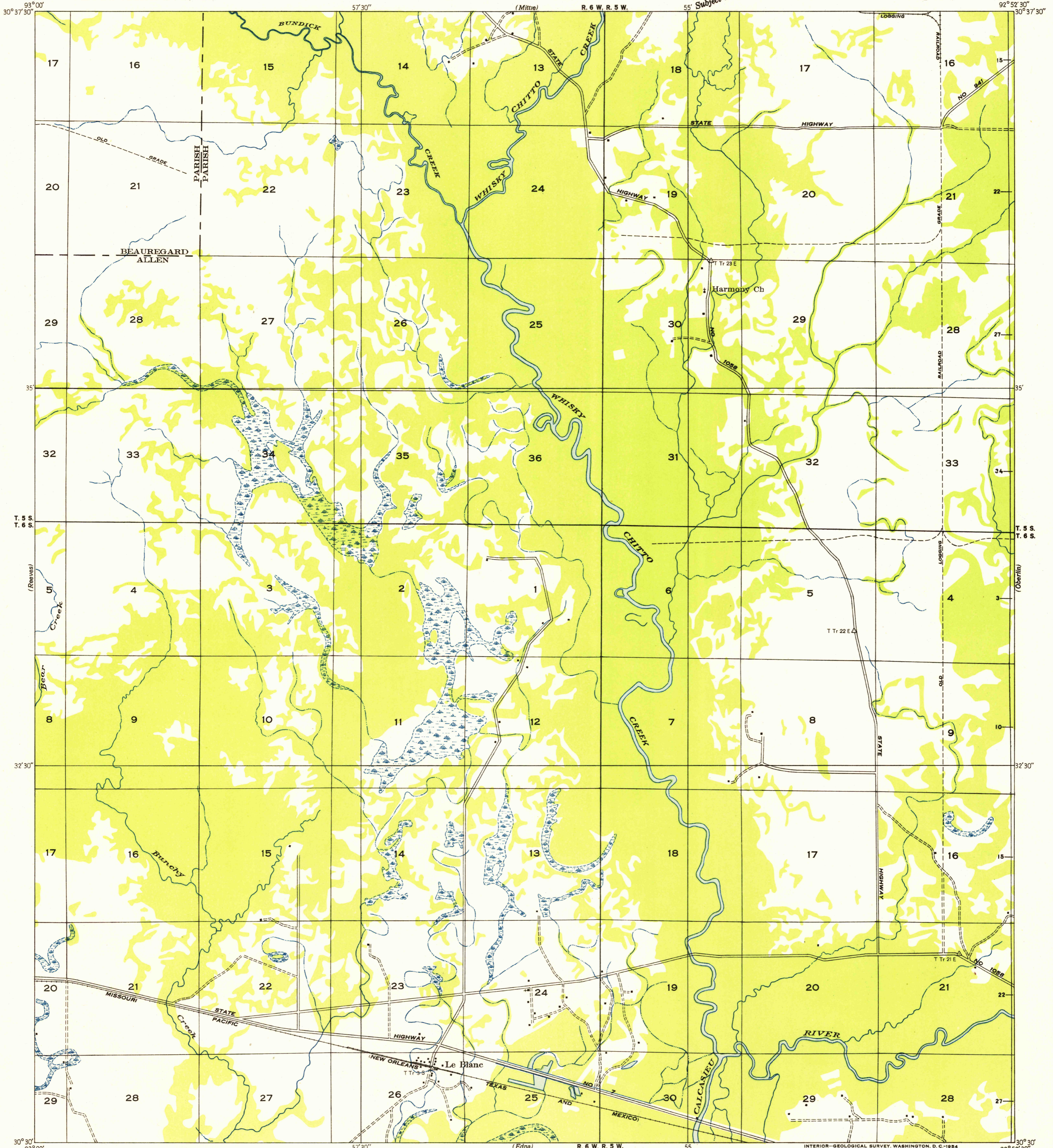


FILE COPY
1:50,000

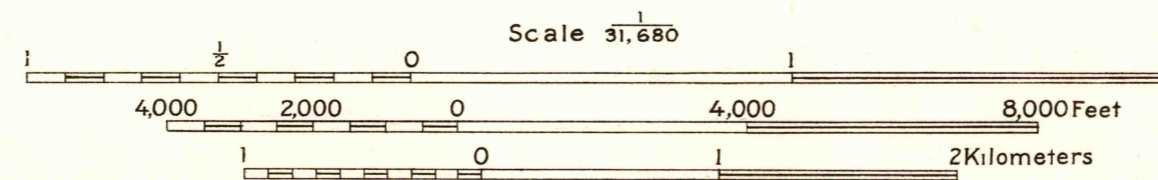
Advance sheet.
Subject to correction.

(Pine Chapel)



Glenn S. Smith, Division Engineer
Compiled by Geological Survey from aerial photographs
Field examination in 1935

TRUE NORTH
MAGNETIC NORTH
APPROXIMATE MEAN
DECLINATION, 1955



USGS
Historical File
Topographic Division

INTERIOR-GEOLOGICAL SURVEY, WASHINGTON, D. C. 1954
Polyconic projection. 1927 North American datum
Land lines added from General Land Office
records adjusted to natural features and control

FILE COPY
1:50,000

LE BLANC, LA.
N 3030-W9252.5/7.5

AUG 3 1954

1100