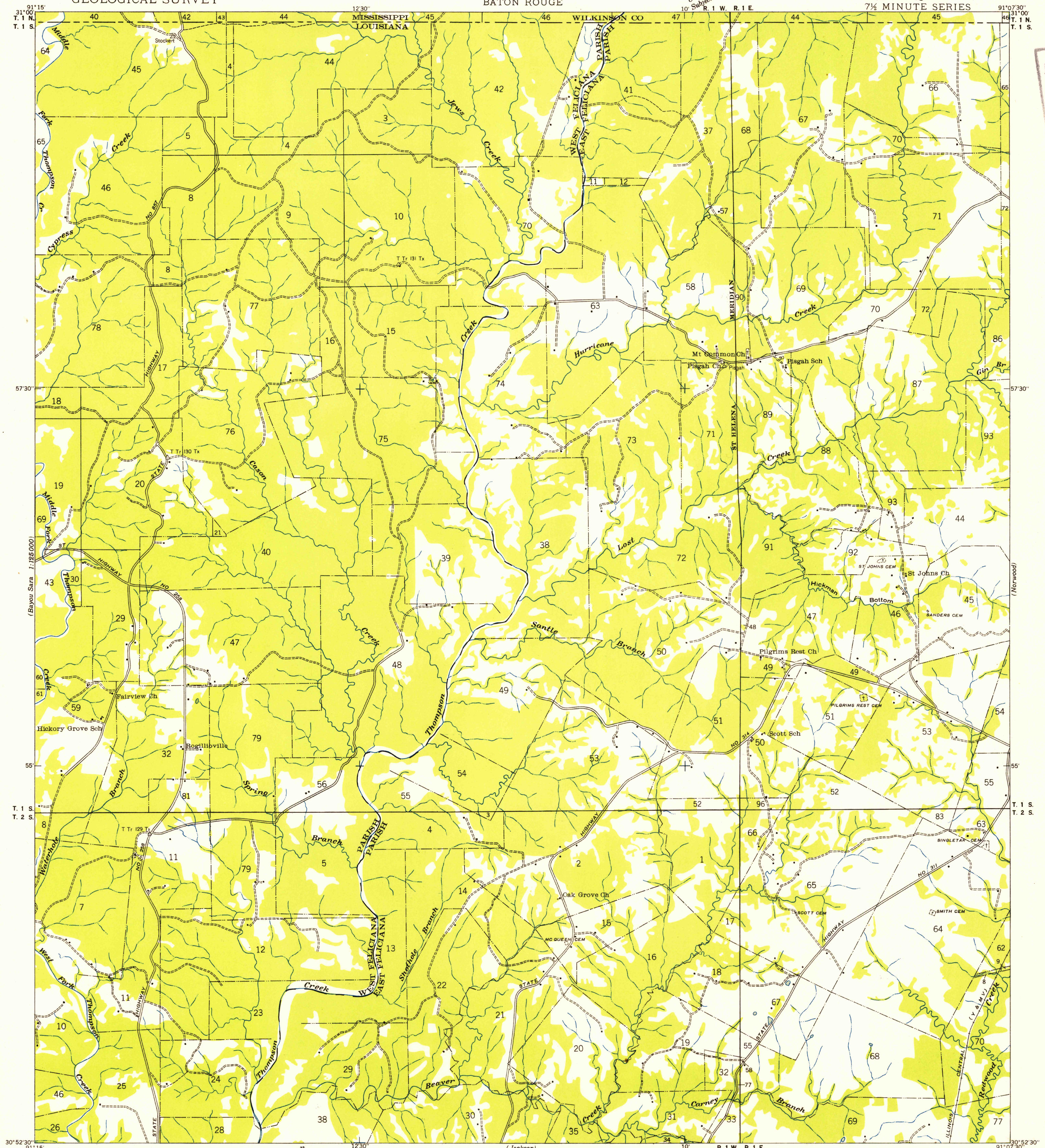


Unedited advance sheet  
10' Subject to correction  
R. I. W. R. I. E.

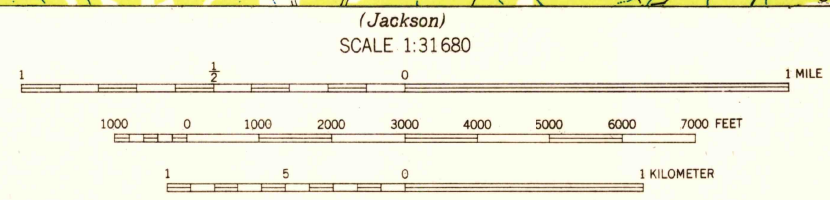
FILE COPY  
Inspection and Editing

FILE COPY  
Inspection and Editing



(Bayou Sara 9115)  
Compiled by Geological Survey from aerial photographs  
Field examination in 1941  
1:250,000

TRUE NORTH  
MAGNETIC NORTH  
APPROXIMATE MEAN  
DECLINATION 1941



USGS  
Historical File  
Topographic Division

Polyconic projection. 1927 North American datum  
Land lines added from General Land Office  
records adjusted to natural features and control

FILE COPY  
Inspection and Editing

LOST CREEK, LA.  
N3052.5-W9107.5/7.5

MAR 23 1954  
1020