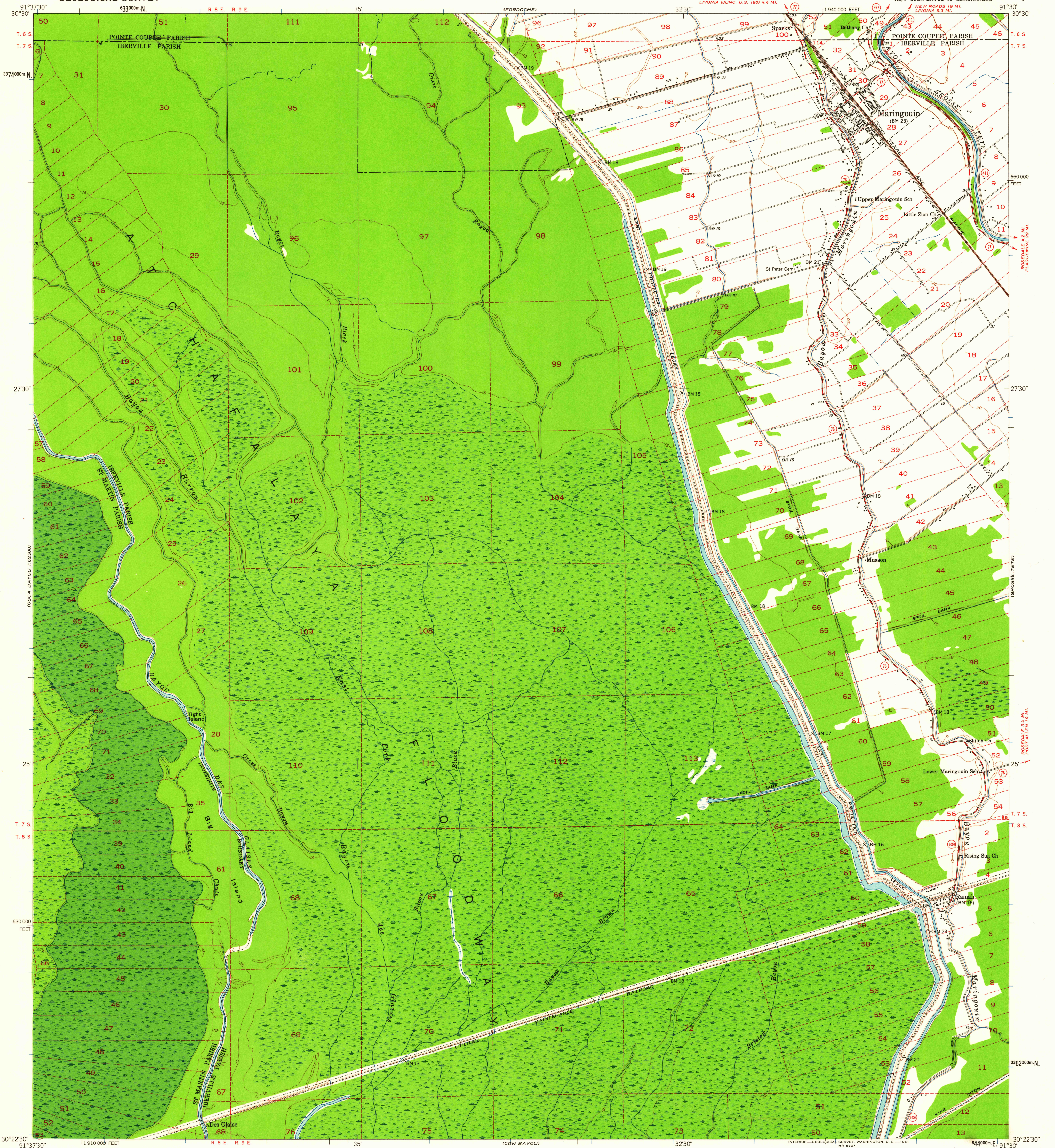
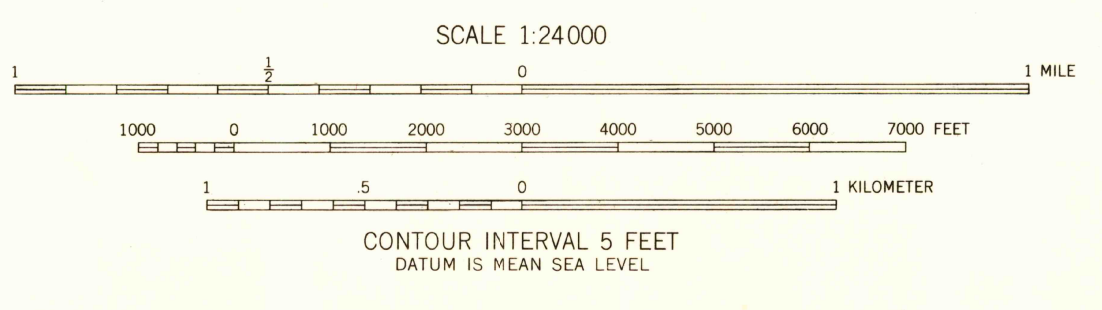
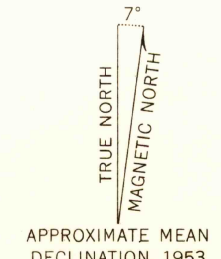


UNITED STATES  
DEPARTMENT OF THE INTERIOR  
GEOLOGICAL SURVEY

MARINGOIN QUADRANGLE  
LOUISIANA  
7.5 MINUTE SERIES (TOPOGRAPHIC)  
NE 1/4 OSCA BAYOU 15' QUADRANGLE



Mapped, edited, and published by the Geological Survey  
Control by USGS, USC&GS, and USCE  
Culture and drainage in part compiled from aerial photographs  
taken 1952. Topography by plane-table surveys 1952-1953  
Polyconic projection. 1927 North American datum  
10,000-foot grid based on Louisiana coordinate system,  
south zone  
1000-meter Universal Transverse Mercator grid ticks,  
zone 15, shown in blue  
Dashed land lines indicate approximate locations



USGS  
Historical File  
Topographic Division



ROAD CLASSIFICATION

Medium-duty	Light-duty
Unimproved dirt	State Route

THIS MAP COMPLIES WITH NATIONAL MAP ACCURACY STANDARDS  
FOR SALE BY U. S. GEOLOGICAL SURVEY, DENVER 25, COLORADO OR WASHINGTON 25, D. C.  
AND BY THE STATE OF LOUISIANA, DEPARTMENT OF PUBLIC WORKS, BATON ROUGE 4, LOUISIANA  
A FOLDER DESCRIBING TOPOGRAPHIC MAPS AND SYMBOLS IS AVAILABLE ON REQUEST

USGS  
FILE COPY  
TOPOGRAPHIC DIVISION

MARINGOIN, LA.  
NE 1/4 OSCA BAYOU 15' QUADRANGLE  
N3022.5-W9130/7.5

1953

AUG - 2 1951

2650