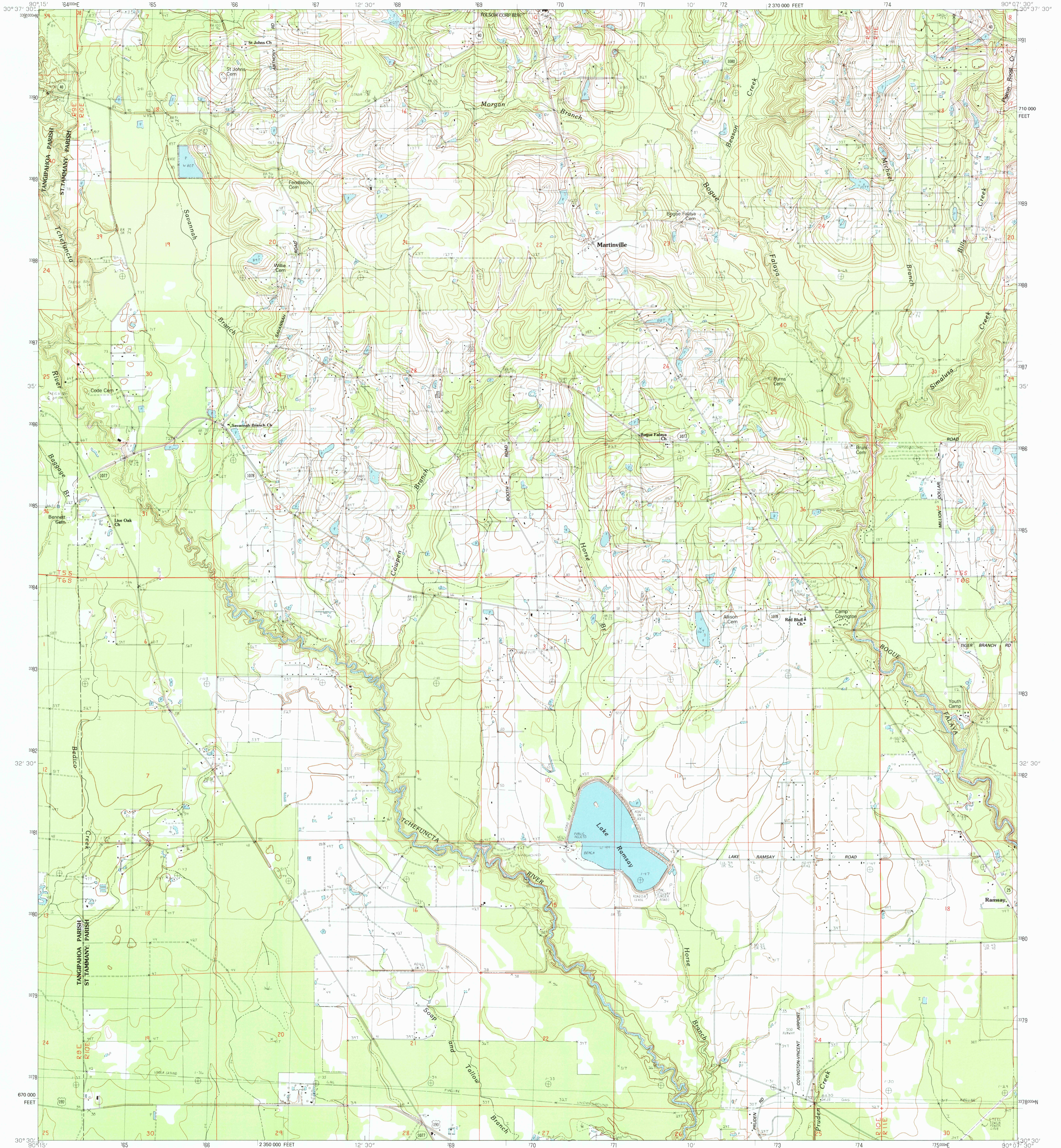


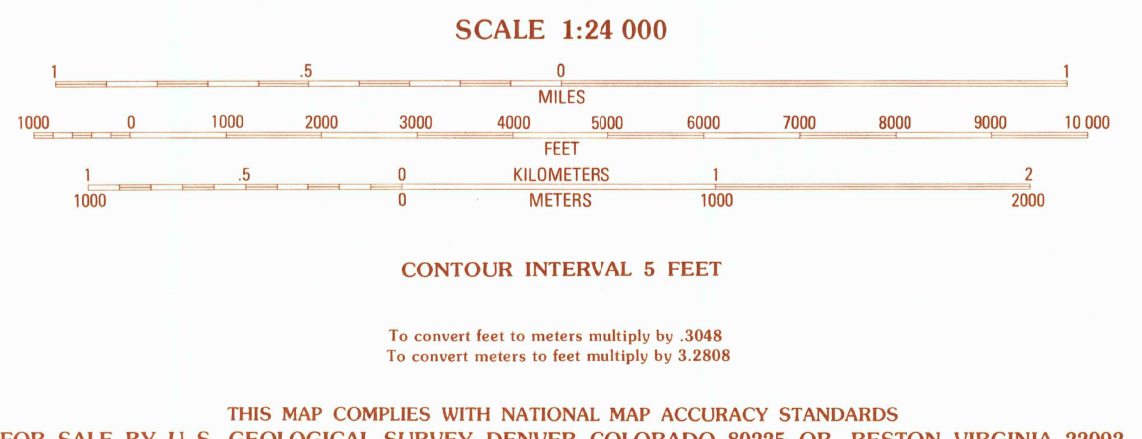
UNITED STATES
DEPARTMENT OF THE INTERIOR
GEOLOGICAL SURVEY

MARTINVILLE QUADRANGLE
LOUISIANA
7.5 MINUTE SERIES (TOPOGRAPHIC)



PRODUCED BY THE UNITED STATES GEOLOGICAL SURVEY CONTROL BY USGS AND NOS/NOAA COMPILED FROM AERIAL PHOTOGRAPHS TAKEN 1978 FIELD CHECKED 1980. MAP EDITED 1983 PROJECTION LAMBERT CONFORMAL CONIC GRID: 1000-METER UNIVERSAL TRANSVERSE MERCATOR 1983 MAGNETIC NORTH DECLINATION 3°36' EAST VERTICAL DATUM NATIONAL GEODETIC VERTICAL DATUM OF 1989 HORIZONTAL DATUM 1927 NORTH AMERICAN DATUM To place on the predicted North American Datum of 1983, move the projection lines as shown by dashed corner ticks (17 meters south and 8 meters east) There may be private inholdings within the boundaries of any Federal and State reservations shown on this map

PROVISIONAL MAP
Produced from original manuscript drawings. Information shown as of date of field check.



LOUISIANA
QUADRANGLE LOCATION

ROAD LEGEND

Improved Road
Unimproved Road
Trail

Interstate Route U.S. Route State Route

1	2	3	1 Husser
			2 Folsom
			3 Enon
4	5	4 Robert	
		5 Waldheim	
		6 Ponchartrou NE	
6	7	7 Madisonville	
		8 Covington	

ADJOINING 7.5 QUADRANGLE NAMES

MARTINVILLE, LOUISIANA
SW4 FOLSOM 15' QUADRANGLE
PROVISIONAL EDITION 1983

30090-E2-TF-024

U.S. GEOLOGICAL SURVEY RESTON, VIRGINIA 20192
FOR SALE BY U.S. GEOLOGICAL SURVEY, DENVER, COLORADO 80225, OR RESTON, VIRGINIA 22092
AND LOUISIANA DEPARTMENT OF PUBLIC WORKS, BATON ROUGE, LOUISIANA 70804

JUL 29 1988
REPRODUCTION COPY