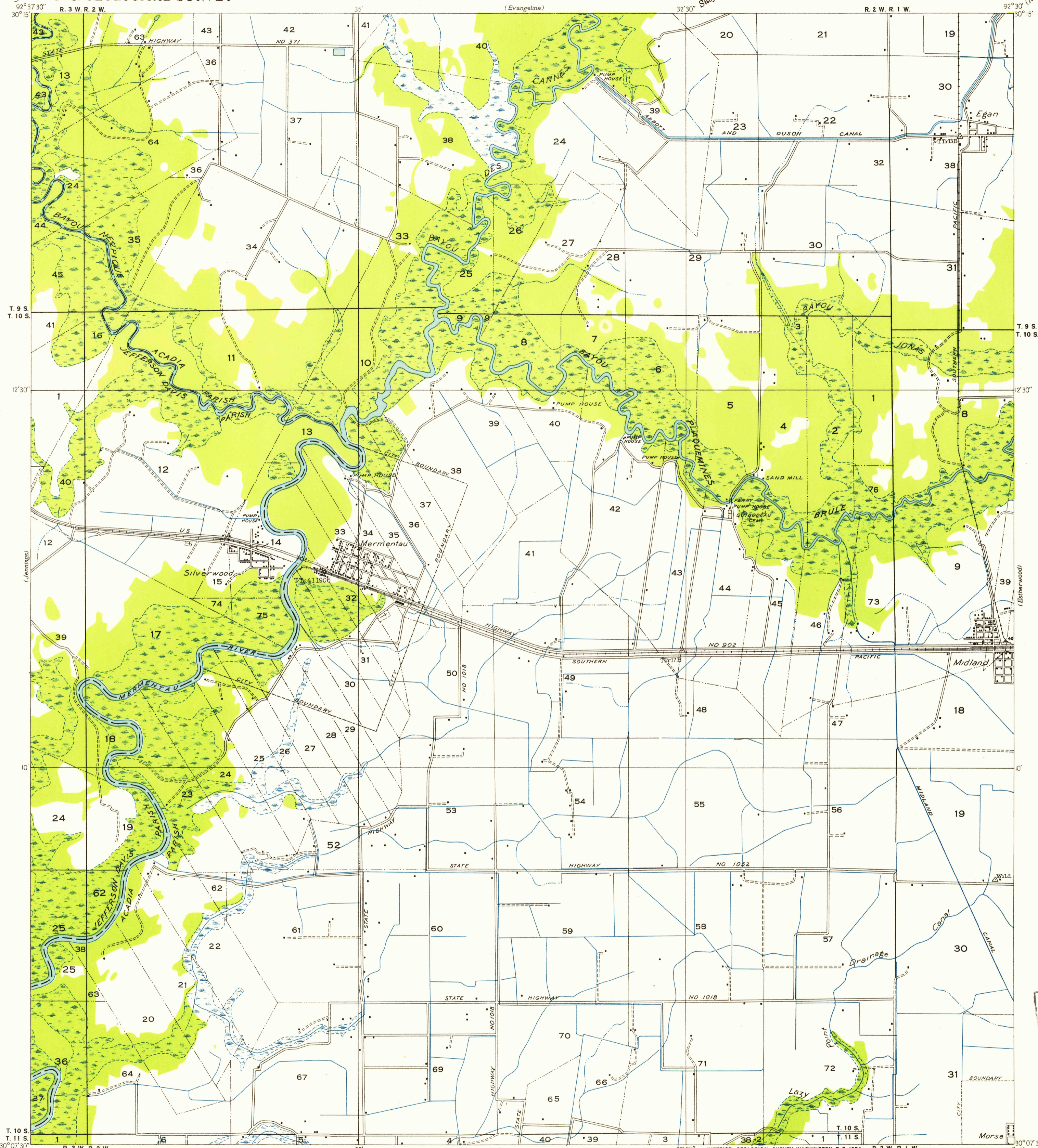


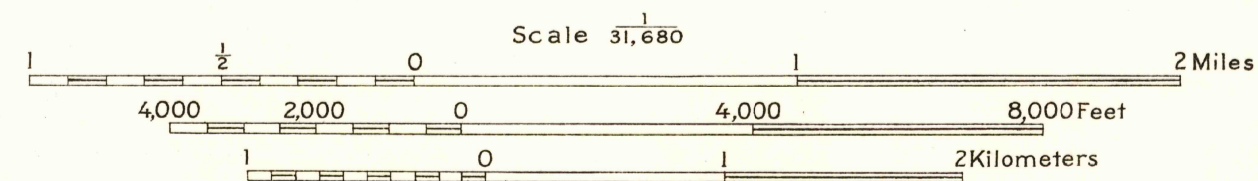
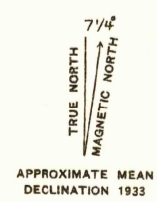
Advance sheet.
Subject to correction



FILE COPY

FILE COPY

Glenn S. Smith, Division Engineer
Compiled by U. S. Geological Survey after field examination
of aerial photographs taken by Air Corps, U. S. Army
Control by U. S. Geological Survey and U. S. Coast and Geodetic Survey
Field examination in 1933



USGS
Historical Files
Topographic Division

Polygonic projection. 1927 North American datum
Land lines added from General Land Office
records adjusted to natural features and control

Township lines	---
Township lines, adjustment indefinite	- - - -
Section lines	---
Section lines, adjustment indefinite	- - - -
Grant lines	---
Grant lines, adjustment indefinite	- - - -
Ditches	---
Shallow ditches	- - - -

MERMENTAU, LA.

N 3007.5 - W 9230 / 7.5

AUG 5 1954