

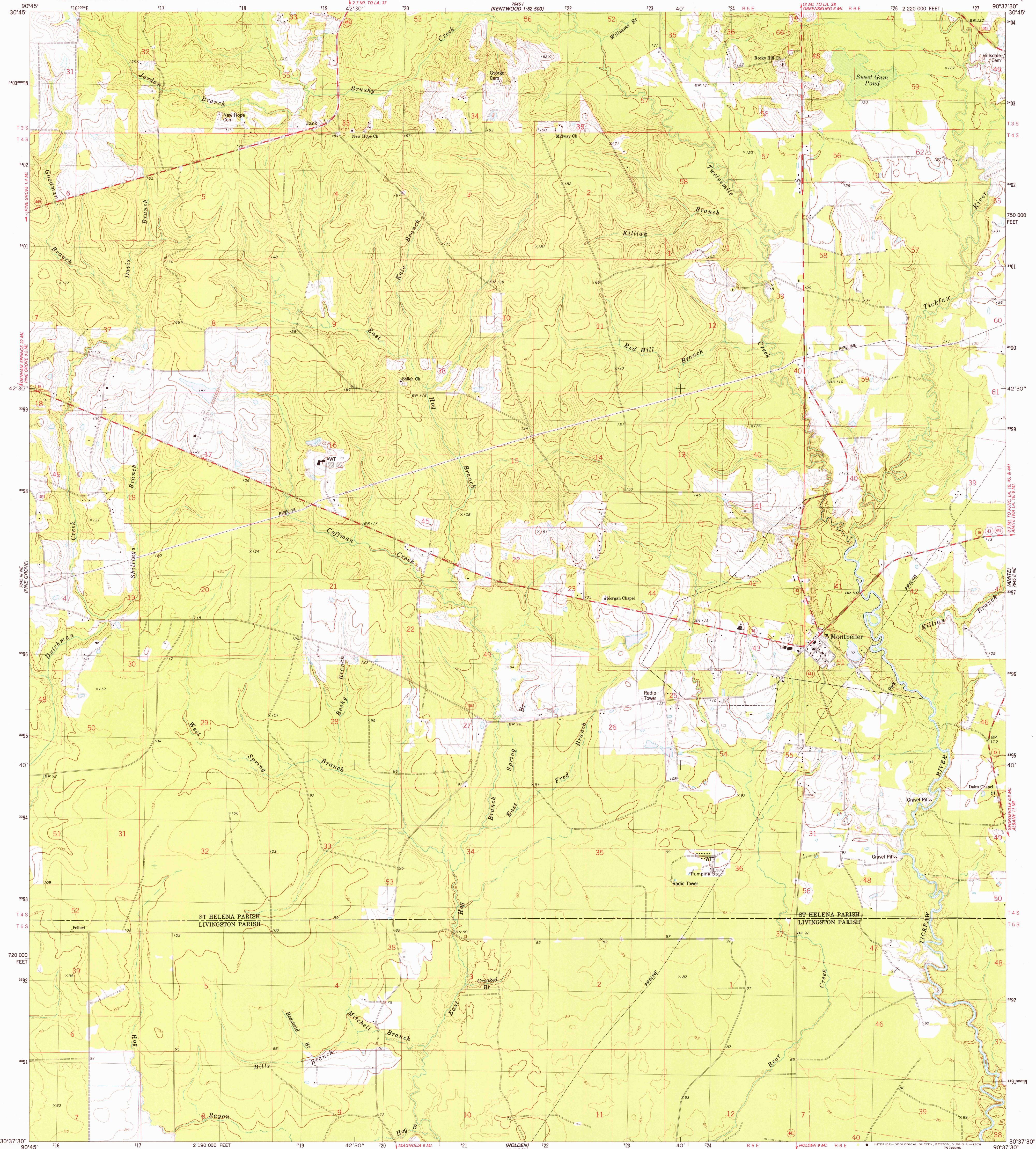
7845 I
1:24,000

UNITED STATES
DEPARTMENT OF THE INTERIOR
GEOLOGICAL SURVEY

STATE OF LOUISIANA
DEPARTMENT OF PUBLIC WORKS
BATON ROUGE

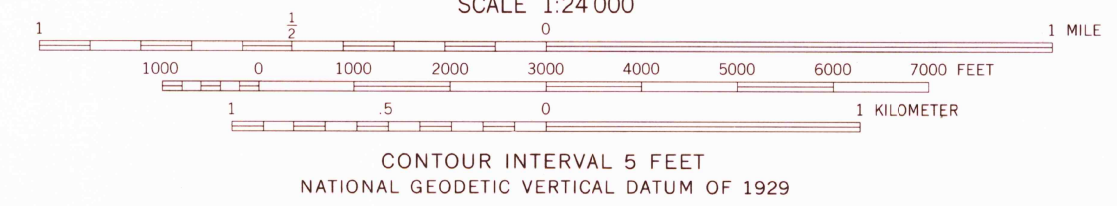
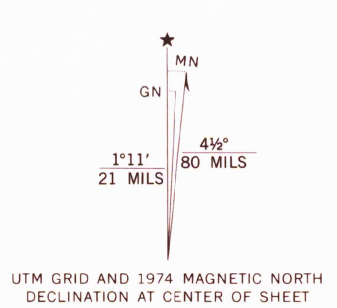
MONTPELIER QUADRANGLE
LOUISIANA
7.5 MINUTE SERIES (TOPOGRAPHIC)
NW/4 AMITE 15' QUADRANGLE

7845 I
1:24,000



(SATSUM)
7845 I
1:24,000

Mapped, edited, and published by the Geological Survey
Control by USGS, NOS/NOAA, and Louisiana Geodetic Survey
Topography by photogrammetric methods from aerial
photographs taken 1974. Field checked 1974
Projection and 10,000-foot grid ticks: Louisiana coordinate
system, south zone (Lambert conformal conic)
1000-meter Universal Transverse Mercator grid,
zone 15. 1927 North American datum
Fine red dashed lines indicate selected fence and field lines where
generally visible on aerial photographs. This information is unchecked



ROAD CLASSIFICATION
Primary highway, hard surface
Secondary highway, hard surface
Light-duty road, hard or improved surface
Unimproved road
Interstate Route
U. S. Route
State Route

UGGS
Historical File
Topographic Division

MONTPELIER, LA.
NW/4 AMITE 15' QUADRANGLE
N3037.5-W9037.5/7.5
1974

JUN 21 1978
3300
AMS 7845 II NW—SERIES V885

THIS MAP COMPLIES WITH NATIONAL MAP ACCURACY STANDARDS
FOR SALE BY U. S. GEOLOGICAL SURVEY, DENVER, COLORADO 80225, OR RESTON, VIRGINIA 22092
AND BY THE STATE OF LOUISIANA, DEPARTMENT OF PUBLIC WORKS, BATON ROUGE, LOUISIANA 70804
A FOLDER DESCRIBING TOPOGRAPHIC MAPS AND SYMBOLS IS AVAILABLE ON REQUEST