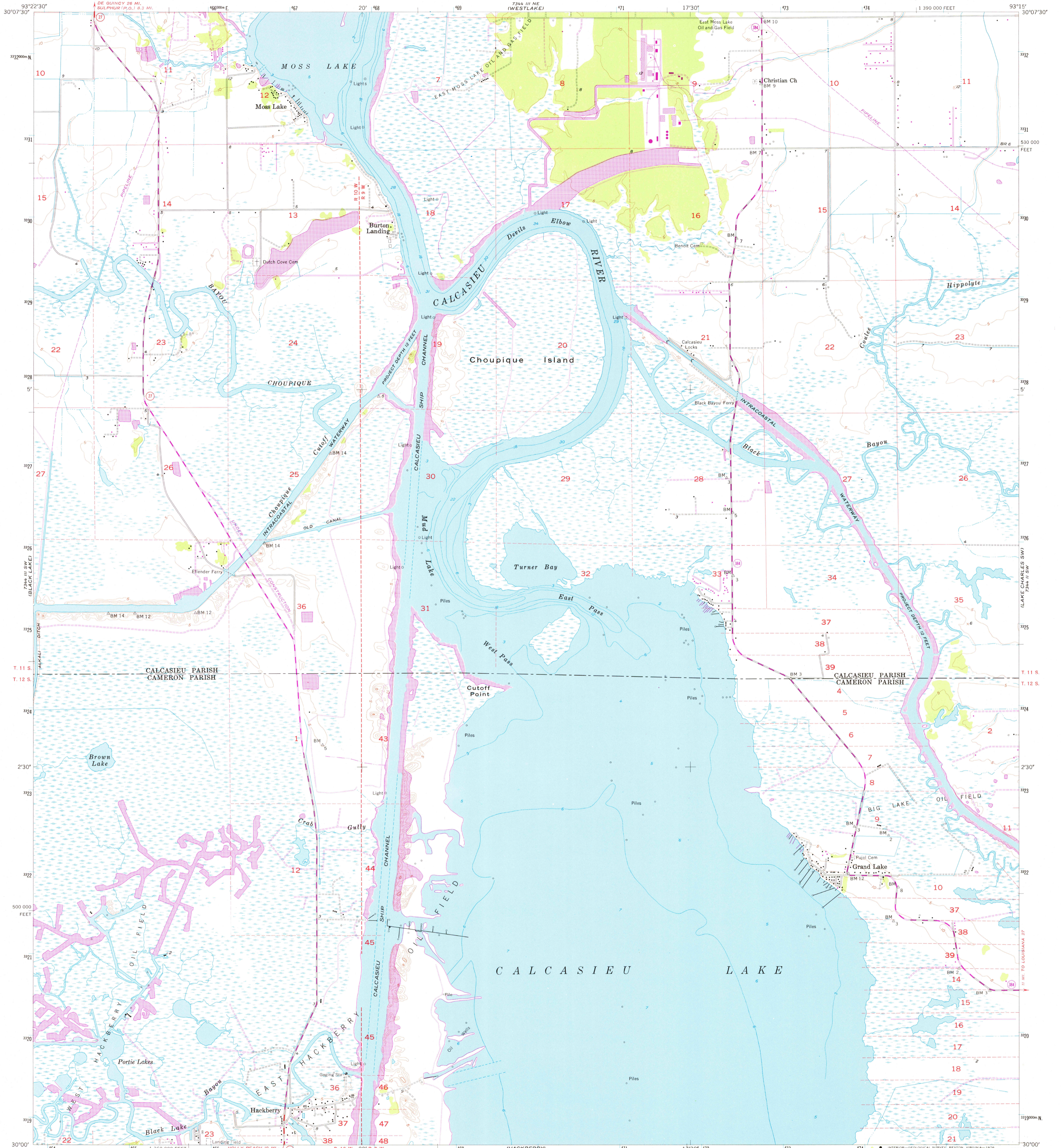
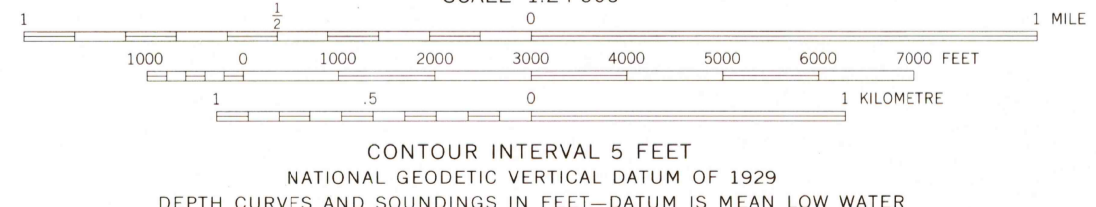
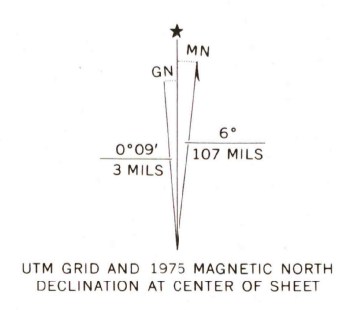


UNITED STATES
DEPARTMENT OF THE INTERIOR
GEOLOGICAL SURVEY

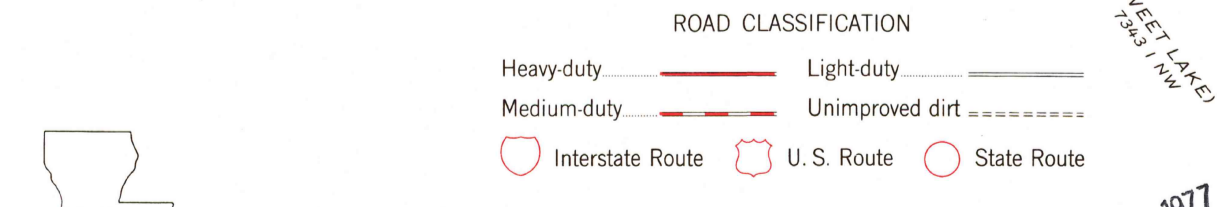
MOSS LAKE QUADRANGLE
LOUISIANA
7.5 MINUTE SERIES (TOPOGRAPHIC)
SE/4 SULPHUR 15' QUADRANGLE



Mapped, edited, and published by the Geological Survey
Control by USGS, USC&GS, USCE, and Louisiana Geologic Survey
Culture and drainage in part compiled from aerial photographs
taken 1951. Topography by planetable surveys 1954-1955
Hydrography from USC&GS charts 1051 (1:175 000) and 884 (1:40 000)
Polyconic projection. 1927 North American datum
10,000-foot grid based on Louisiana coordinate system,
south zone
Dashed land lines indicate approximate locations
Certain land lines unsurveyed in T. 11 S.-R. 10 W. and T. 12 S.-R. 10 W.
1000-metre Universal Transverse Mercator grid ticks,
zone 15, shown in blue
Revisions shown in purple compiled from aerial photographs
taken 1975. This information not field checked



CONTOUR INTERVAL 5 FEET
NATIONAL GEODETIC VERTICAL DATUM OF 1929
DEPTH CURVES AND SOUNDINGS IN FEET-DATUM IS MEAN LOW WATER
THIS MAP COMPLIES WITH NATIONAL MAP ACCURACY STANDARDS
FOR SALE BY U. S. GEOLOGICAL SURVEY, DENVER, COLORADO 80225, OR RESTON, VIRGINIA 22092
AND BY THE STATE OF LOUISIANA, DEPARTMENT OF PUBLIC WORKS, BATON ROUGE, LOUISIANA 70804
A FOLDER DESCRIBING TOPOGRAPHIC MAPS AND SYMBOLS IS AVAILABLE ON REQUEST



USGS
Historical File
Topographic Division

MOSS LAKE, LA FEB 23 1977
SE/4 SULPHUR 15' QUADRANGLE
N3000-W9315/7.5
1955
PHOTOREVISED 1975
AMS 7344 III SE-SERIES V885