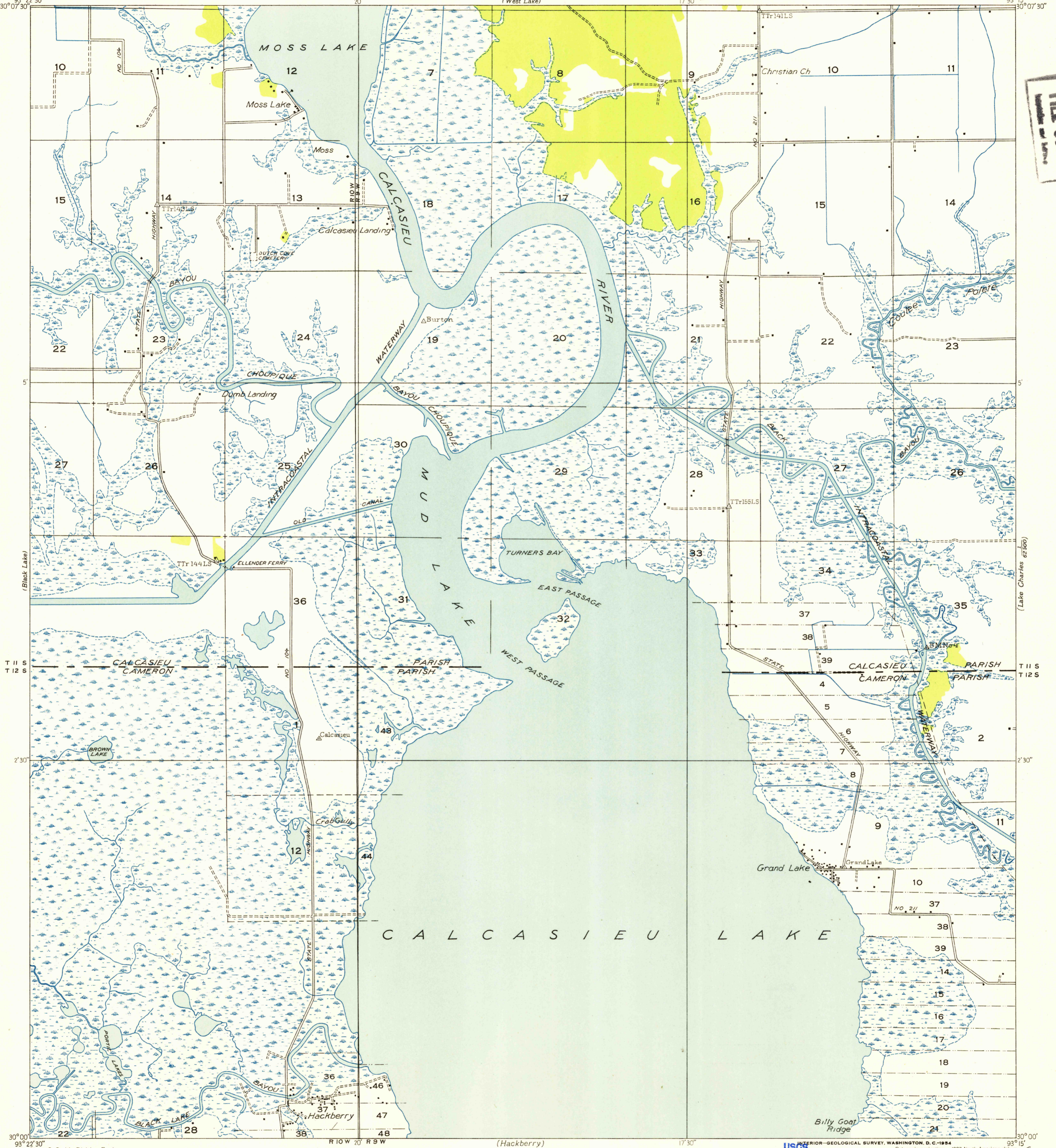


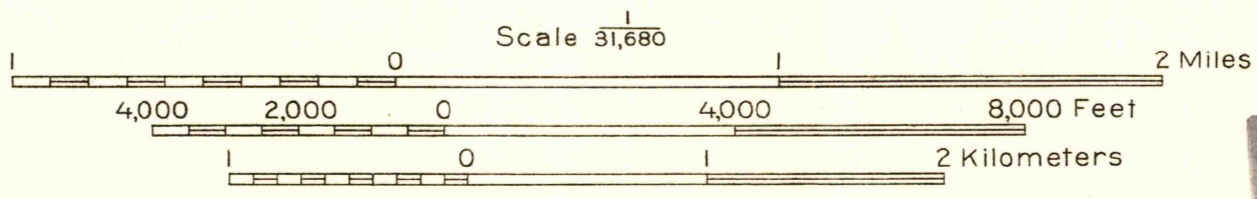
Advance sheet.  
Subject to correction.

FILE COPY



Glenn S. Smith, Division Engineer  
Compiled by U. S. Geological Survey after field examination  
of aerial photographs taken by Air Corps, U. S. Army  
Control by U. S. Geological Survey and U. S. Coast and Geodetic Survey  
Field examination in 1932

TRUE NORTH  
MAGNETIC NORTH  
APPROXIMATE MEAN  
DECLINATION, 1932



USGS  
Historical File  
Topographic Division

FILE COPY

INTERIOR—GEOLOGICAL SURVEY, WASHINGTON, D. C.—1934  
Polyconic projection, 1927 North American datum  
Land lines adopted from General Land Office  
records adjusted to natural features and control

Township lines, adjustment indefinite  
Section lines  
Section lines, adjustment indefinite  
Grant lines  
Grant lines, adjustment indefinite  
Ditches  
Shallow ditches

MOSS LAKE, LA.  
N 3000-W 9315/75

AUG 3 1954  
1080