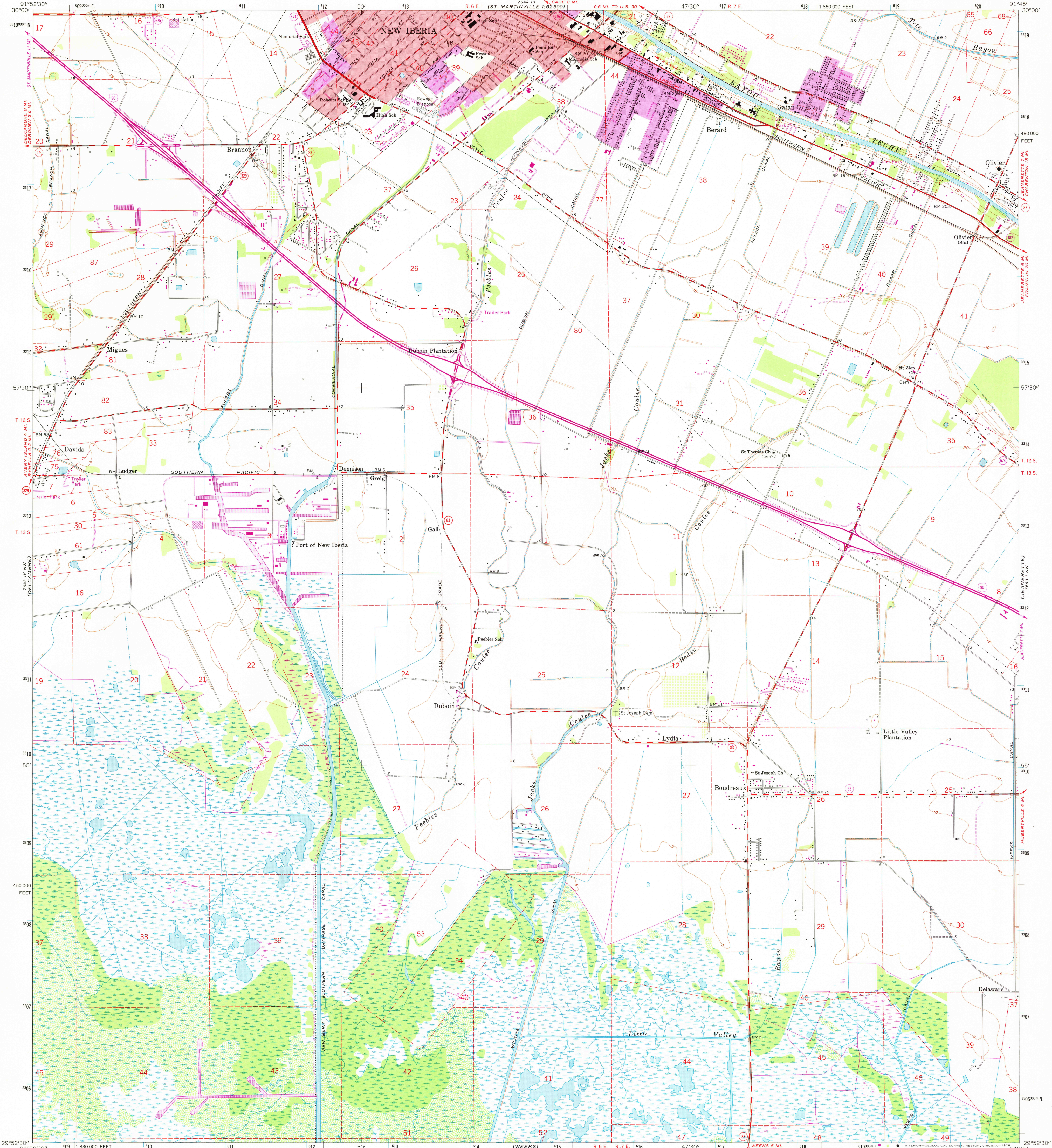


ST. MARTINVILLE 7 MI.
1:24,000

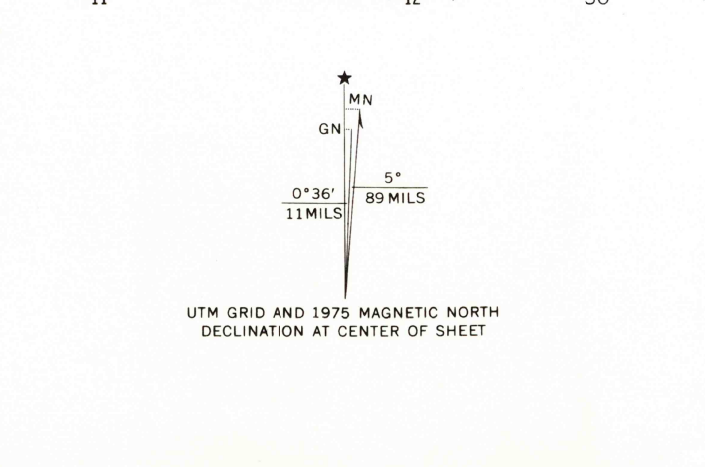
UNITED STATES
DEPARTMENT OF THE INTERIOR
GEOLOGICAL SURVEY

NEW IBERIA SOUTH QUADRANGLE
LOUISIANA—IBERIA PARISH
7.5 MINUTE SERIES (TOPOGRAPHIC)
NE/4 DEROUEN 15' QUADRANGLE

7.5 MI. W. OF
LOREAUVILLE
1:24,000



Mapped, edited, and published by the Geological Survey
Control by USGS, USC&GS, and Louisiana Geodetic Survey
Planimetry by photogrammetric methods from aerial photographs
taken 1962. Topography by planetable surveys 1963
Poyconic projection. 1927 North American datum
10,000-foot grid based on Louisiana coordinate system, south zone
1000-meter Universal Transverse Mercator grid ticks,
zone 15, shown in blue
Red tint indicates area in which only landmark buildings are shown
Where omitted, land lines have not been established or
are not shown because of insufficient data
Revisions shown in purple compiled from aerial photographs
taken 1975. This information not field checked
Purple tint indicates extension of urban areas



SCALE 1:24,000
CONTOUR INTERVAL 5 FEET
NATIONAL GEODETIC VERTICAL DATUM OF 1929
THIS MAP COMPLIES WITH NATIONAL MAP ACCURACY STANDARDS
FOR SALE BY U. S. GEOLOGICAL SURVEY, DENVER, COLORADO 80225 OR RESTON, VIRGINIA 22092
AND STATE OF LOUISIANA, DEPARTMENT OF PUBLIC WORKS, BATON ROUGE, LOUISIANA 70804
A FOLDER DESCRIBING TOPOGRAPHIC MAPS AND SYMBOLS IS AVAILABLE ON REQUEST

ROAD CLASSIFICATION
Heavy-duty — Light-duty
Medium-duty — Unimproved dirt
U.S. Route — State Route
MAR 24 1979
USGS
Historical File
Topographic Division
NEW IBERIA SOUTH, LA.
NE/4 DEROUEN 15' QUADRANGLE
N2952.5—W9145/7.5
PHOTOREVISED 1975
AMS 7643 IV NE—SERIES V885

7.5 MI. W. OF
LOREAUVILLE
1:24,000

5/100