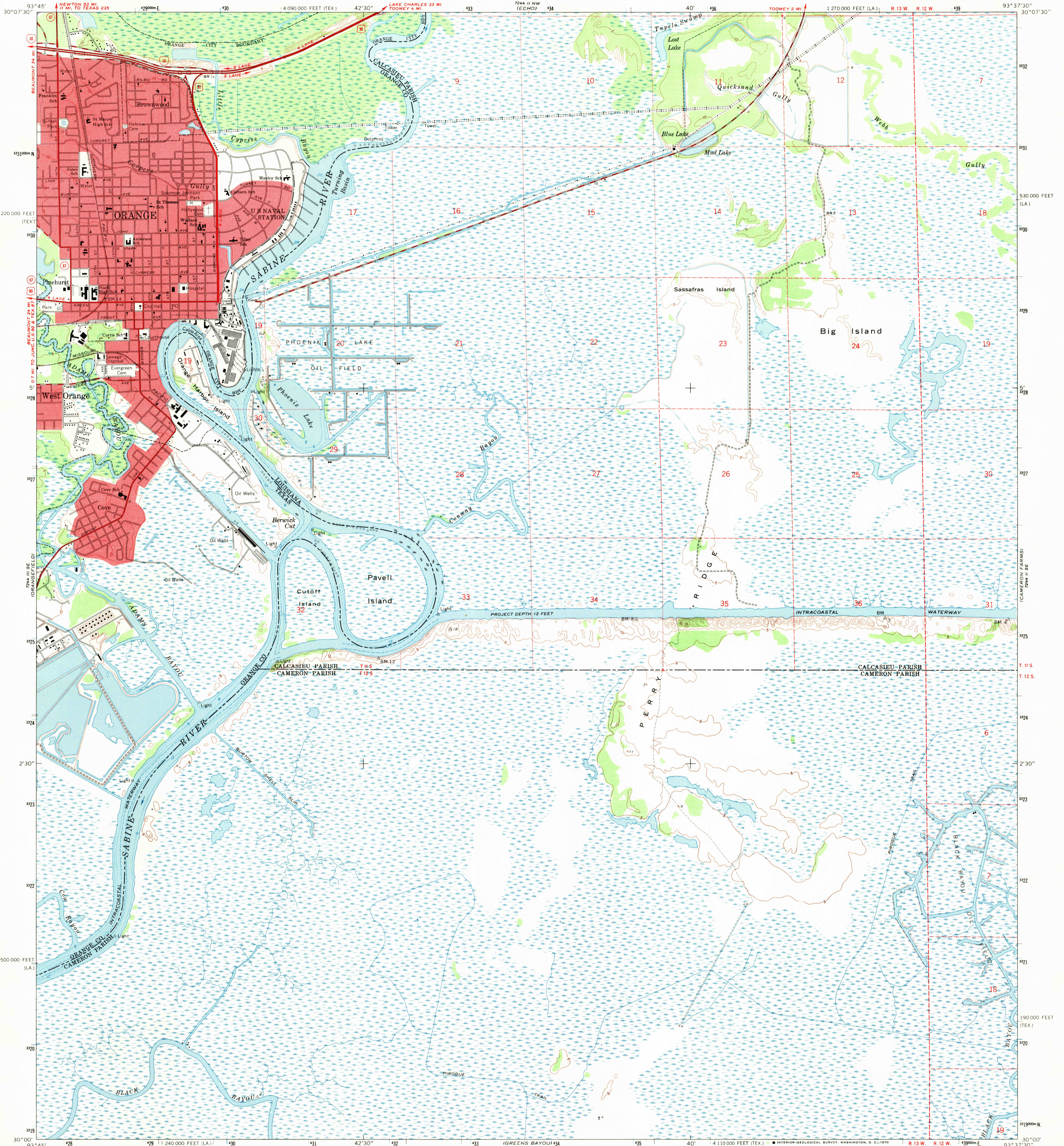
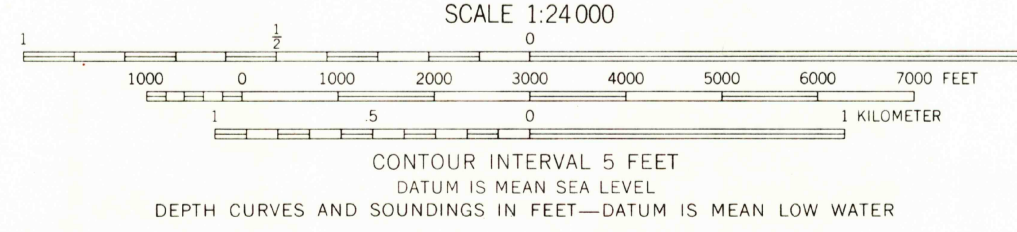
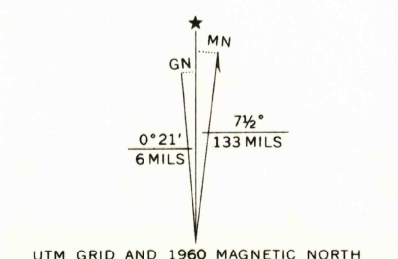


UNITED STATES  
DEPARTMENT OF THE INTERIOR  
GEOLOGICAL SURVEY

ORANGE QUADRANGLE  
LOUISIANA—TEXAS  
7.5 MINUTE SERIES (TOPOGRAPHIC)  
SW 4 ORANGE 15 QUADRANGLE



Mapped, edited, and published by the Geological Survey  
Control by USGS, USC&GS, and Louisiana Geodetic Survey  
Culture and drainage in part compiled from aerial photographs  
taken 1959. Topography enlarged from 1:62 500-scale map of  
Orange quadrangle, 15 minute series. Original map  
by planetable surveys 1955. Revised 1960  
Hydrography compiled from USC&GS chart 884 (1955)  
Polyconic projection. 1927 North American datum  
10 000-foot grids based on Louisiana coordinate system, south zone,  
and Texas coordinate system, central zone  
1000-meter Universal Transverse Mercator grid ticks,  
zone 15, shown in blue  
Red tint indicates areas in which only landmark buildings are shown  
Dashed land lines indicate approximate locations  
Dotted land lines established by private survey for the State of Louisiana  
Land lines surveyed in T. 12 S. - R. 13 W.



USGS  
Historical File  
Topographic Division



U.S.G.S.  
FILE COPY  
TOPOGRAPHIC DIVISION

ROAD CLASSIFICATION  
Heavy-duty ——— Light-duty ———  
Medium-duty ——— Unimproved dirt ———  
Interstate Route U. S. Route State Route

ORANGE, LA.—TEX.  
SW 4 ORANGE 15 QUADRANGLE  
N3000—W9337.5/7.5  
1960  
AMS 7244 II SW—SERIES V885

THIS MAP COMPLIES WITH NATIONAL MAP ACCURACY STANDARDS  
FOR SALE BY U. S. GEOLOGICAL SURVEY, DENVER, COLORADO 80225, OR WASHINGTON, D. C. 20242  
AND BY THE STATE OF LOUISIANA, DEPARTMENT OF PUBLIC WORKS, BATON ROUGE, LOUISIANA 70804  
A FOLDER DESCRIBING TOPOGRAPHIC MAPS AND SYMBOLS IS AVAILABLE ON REQUEST

JUL 2 1970  
1210