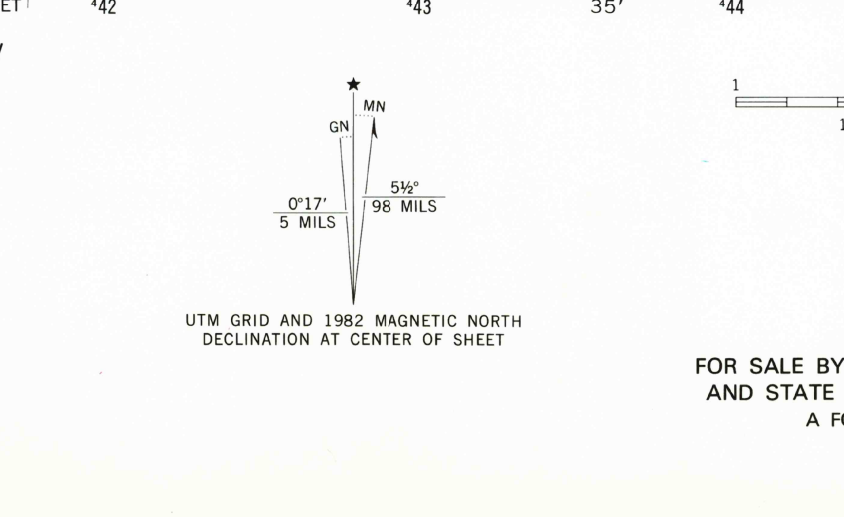




Mapped, edited, and published by the Geological Survey  
Control by USGS and NOS/NOAA  
Orthophotomap prepared from high-altitude aerial photograph  
taken March 2, 1975. Topography by planetable surveys 1980  
Supersedes Peveto Beach map dated 1934. Map edited 1982  
Selected hydrographic data compiled from NOS Chart 11341 (1980)  
This information is not intended for navigational purposes  
Projection and 10,000-foot grid ticks: Louisiana coordinate  
system, south zone (Lambert conformal conic)  
1000-meter Universal Transverse Mercator grid, zone 15  
1927 North American Datum  
To place on the predicted North American Datum 1983  
move the projection lines 20 meters south and  
17 meters east as shown by dashed corner ticks  
All or part of this quadrangle lies within a subsidence area.  
There may be private inholdings within the boundaries of the  
National or State reservations shown on this map  
Where omitted, land lines have not been established or  
are not shown because of insufficient data



CONTOUR INTERVAL 5 FEET  
NATIONAL GEODETIC VERTICAL DATUM OF 1929  
DEPTH CURVES AND SOUNDINGS IN FEET-GULF COAST LOW WATER DATUM  
THE RELATIONSHIP BETWEEN THE TWO DATUMS IS VARIABLE  
THE MEAN RANGE OF TIDE IS APPROXIMATELY 1.5 FEET

THIS MAP COMPLIES WITH NATIONAL MAP ACCURACY STANDARDS  
FOR SALE BY U. S. GEOLOGICAL SURVEY, DENVER, COLORADO 80225, OR RESTON, VIRGINIA 22092  
AND STATE OF LOUISIANA, DEPARTMENT OF PUBLIC WORKS, BATON ROUGE, LOUISIANA 70804  
A FOLDER DESCRIBING TOPOGRAPHIC MAPS AND SYMBOLS IS AVAILABLE ON REQUEST

ROAD CLASSIFICATION

Primary highway, hard surface	Light-duty road, hard or improved surface
Secondary highway, hard surface	Unimproved road

○ Interstate Route   □ U. S. Route   ○ State Route

LOUISIANA  
QUADRANGLE LOCATION

PEVETO BEACH, LA.  
SE 1/4 JOHNSONS BAYOU 15' QUADRANGLE  
N2945-W9330/7.5  
1982  
DMA 7243 1 SE-SERIES V8850