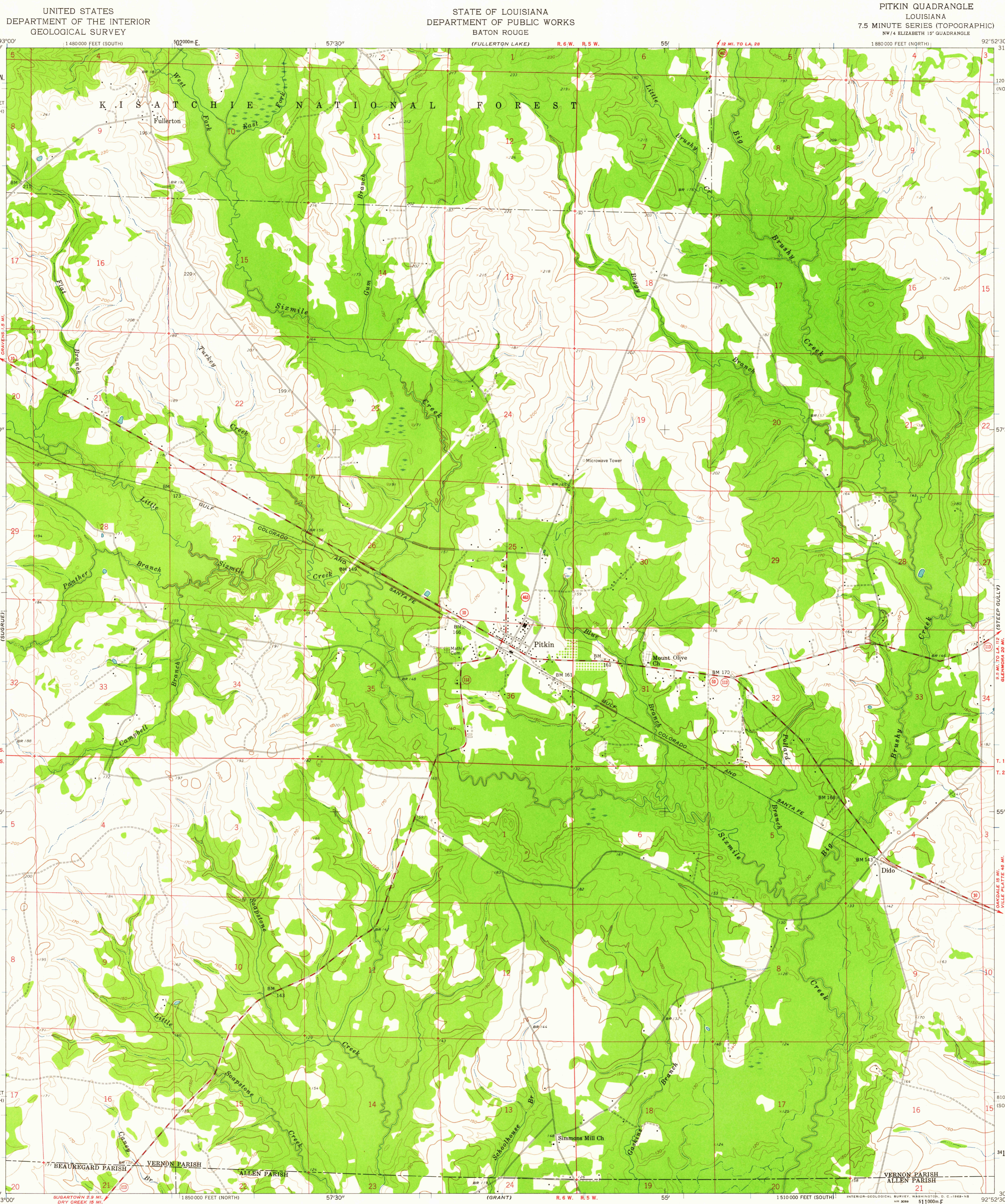


(GRAND CREEK)  
31°00'  
3429000m N.  
850 000 FEET (SOUTH)  
57°30'  
T. 1 S.  
T. 2 S.  
55'  
80 000 FEET (NORTH)  
30°52'30"  
(SUGARTOWN)



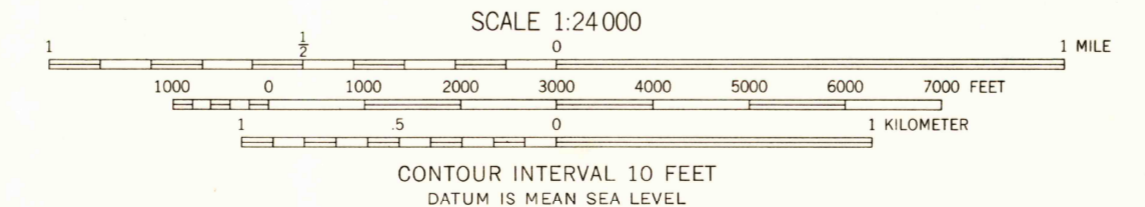
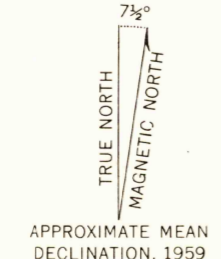
(LEANDER SE)  
120 000 FEET (NORTH)  
57°30'  
T. 1 S.  
T. 2 S.  
55'  
810 000 FEET (SOUTH)  
3416000m N.  
30°52'30"  
(ELIZABETH)

UNITED STATES  
DEPARTMENT OF THE INTERIOR  
GEOLOGICAL SURVEY

STATE OF LOUISIANA  
DEPARTMENT OF PUBLIC WORKS  
BATON ROUGE

PITKIN QUADRANGLE  
LOUISIANA  
7.5 MINUTE SERIES (TOPOGRAPHIC)  
NW 1/4 ELIZABETH 15' QUADRANGLE

Mapped, edited, and published by the Geological Survey  
Control by USGS, USC&GS, and Louisiana Geodetic Survey  
Culture and drainage in part compiled from aerial photographs  
taken 1951. Topography by planetable surveys 1945-1947  
and 1950-1951. Revised 1959  
Polyconic projection. 1927 North American datum  
10,000-foot grids based on Louisiana coordinate system,  
north and south zones  
1000-meter Universal Transverse Mercator grid ticks,  
zone 15, shown in blue



USGS  
Historical File  
Topographic Division



ROAD CLASSIFICATION  
Medium-duty — Light-duty  
Unimproved dirt —  
State Route

U.S.G.S.  
FILE COPY  
TOPOGRAPHIC DIVISION

PITKIN, LA.  
NW 1/4 ELIZABETH 15' QUADRANGLE  
N 3052.5-W 9252.5/7.5

THIS MAP COMPLIES WITH NATIONAL MAP ACCURACY STANDARDS  
FOR SALE BY U. S. GEOLOGICAL SURVEY, DENVER 25, COLORADO OR WASHINGTON 25, D. C.  
AND BY THE STATE OF LOUISIANA, DEPARTMENT OF PUBLIC WORKS, BATON ROUGE 4, LOUISIANA  
A FOLDER DESCRIBING TOPOGRAPHIC MAPS AND SYMBOLS IS AVAILABLE ON REQUEST

1959

JUL - 6 1959  
5105