

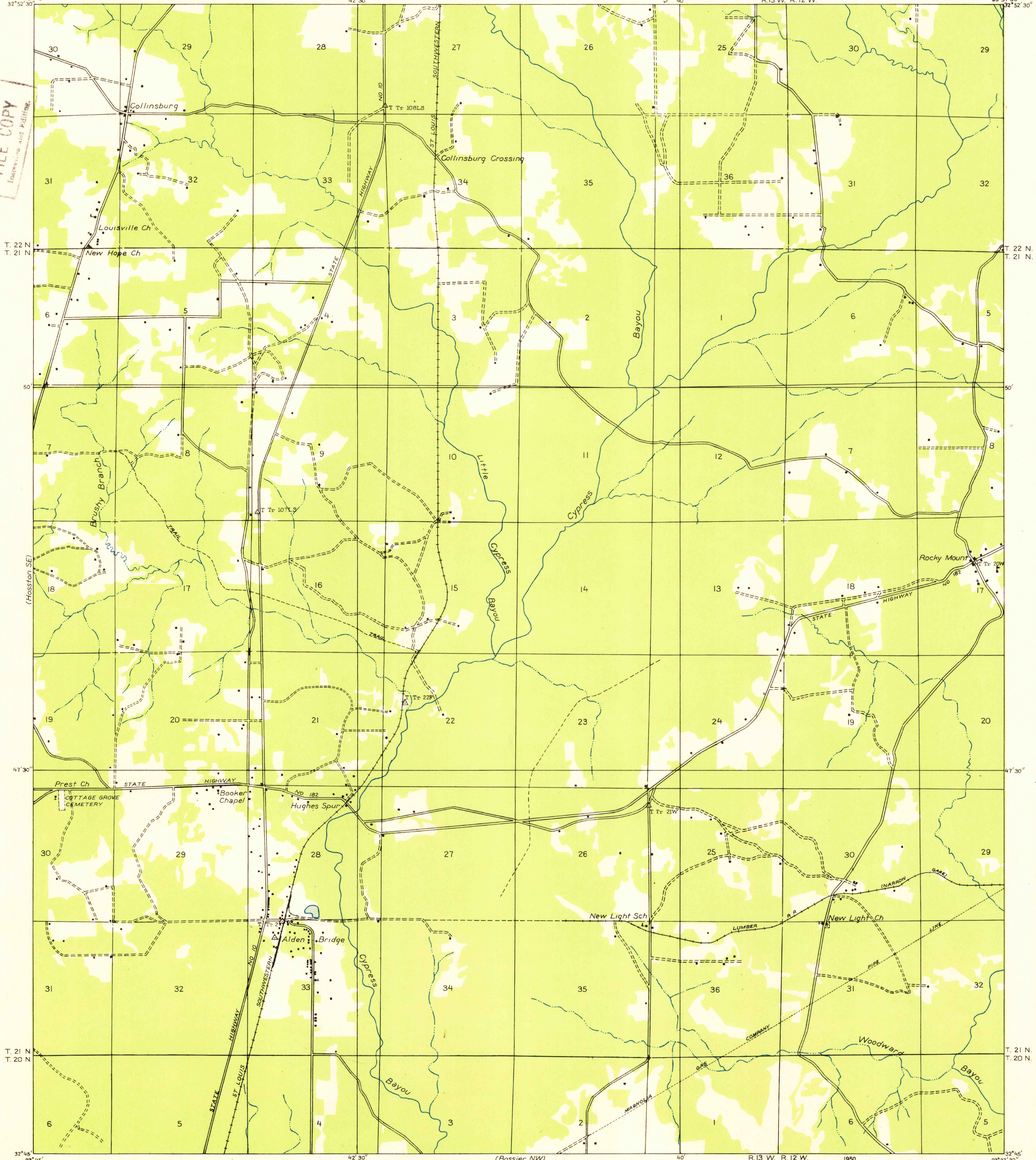
(Hosston NE) 93° 45'  
32° 52' 30"

Advance sheet  
Subject to correction

R. 13 W. R. 12 W.

93° 37' 30"  
32° 52' 30"

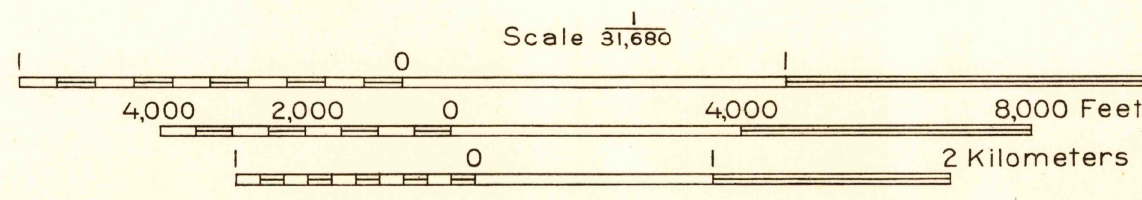
U.S.G.S.  
FILE COPY  
Inspection and Editing.



(Shreveport NE) 93° 45'  
32° 45'

Glenn S. Smith, Division Engineer  
Compiled by U. S. Geological Survey after field examination  
of aerial photographs taken by Air Corps, U. S. Army  
Control by U. S. Geological Survey  
Field examination in 1932

TRUE NORTH  
MAGNETIC NORTH  
APPROXIMATE MEAN  
DECLINATION, 1932



USGS  
Historical File  
Topographic Division  
U. S. G. S.  
FILE COPY  
Inspection and Editing.

- Polyconic projection, 1927 North American datum
- Land lines added from General Land Office records adjusted to natural features and control
- Township lines
- Township lines, adjustment indefinite
- Section lines
- Section lines, adjustment indefinite
- Grant lines
- Grant lines, adjustment indefinite
- Ditches
- Shallow ditches

PLAIN DEALING, LA.  
(S W)  
N 3245-W9337.5/7.5