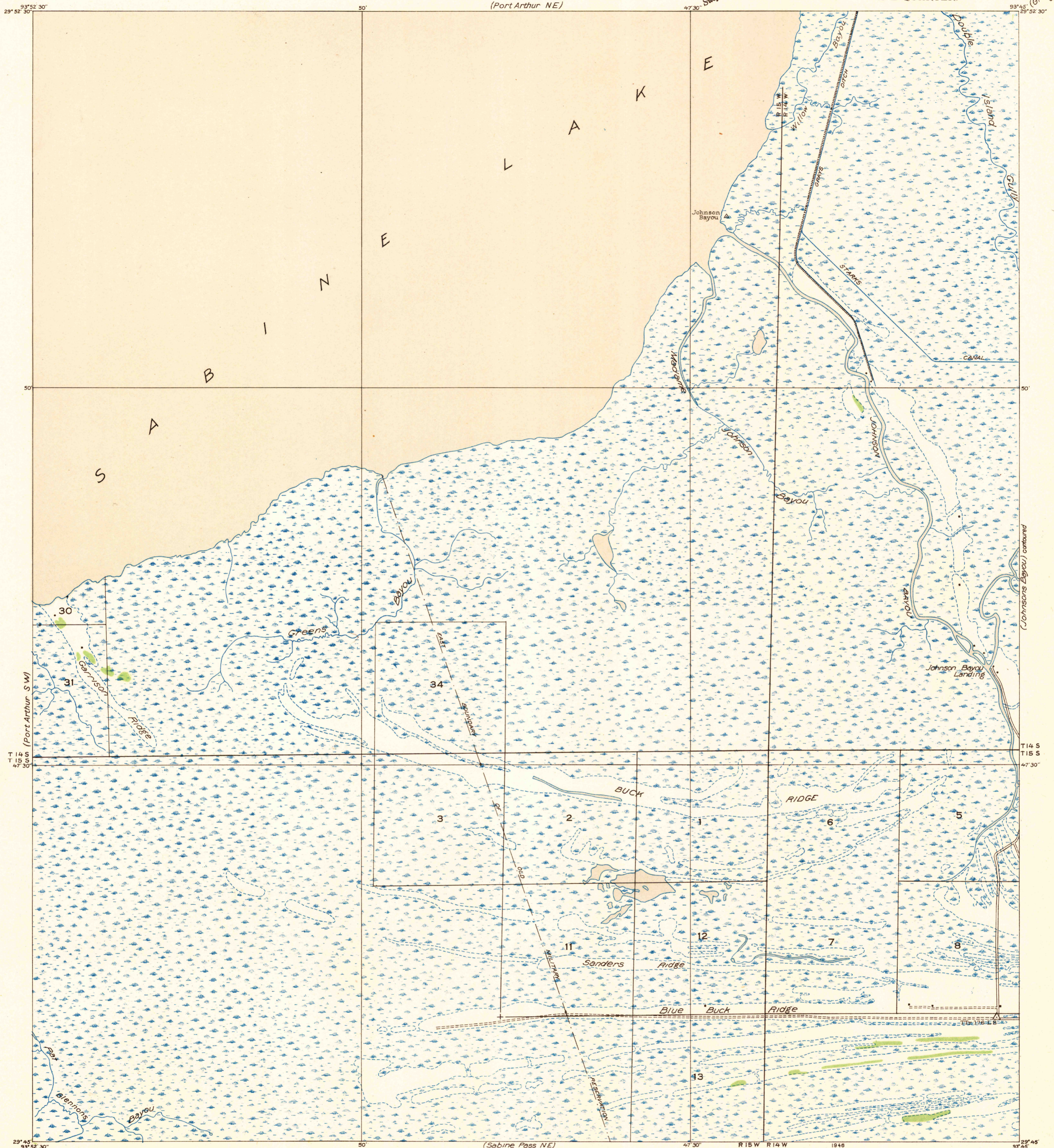


U. S. G. S.  
**FILE COPY**  
Inspection and Editing.



Advance sheet.  
Subject to correction.

(Greens Bayou)  
continued

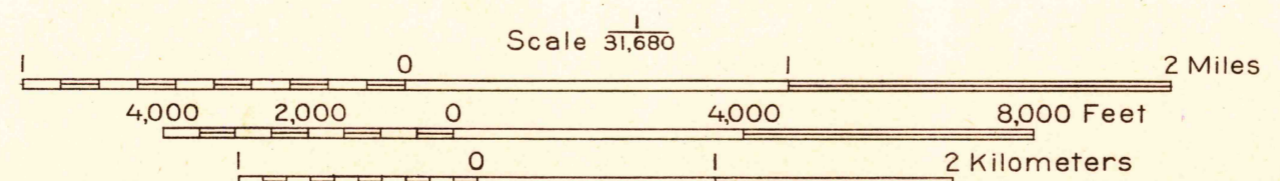
(Johnson Bayou) continued

(Port Arthur SW)

(Port Arthur SW)

Glenn S. Smith, Division Engineer  
Compiled by U. S. Geological Survey after field examination  
of aerial photographs taken by Air Corps, U. S. Army  
Control by U. S. Geological Survey and U. S. Coast and Geodetic Survey  
Field examination in 1932

TRUE NORTH  
MAGNETIC NORTH  
APPROXIMATE MEAN  
DECLINATION, 1932



USGS  
**Historical File**  
Topographic Division  
**FILE COPY**  
Inspection and Editing.

Polyconic projection. 1927 North American datum  
Land lines added from General Land Office  
records adjusted to natural features and control

Township lines  
Township lines, adjustment indefinite  
Section lines  
Section lines, adjustment indefinite  
Grant lines  
Grant lines, adjustment indefinite  
Ditches  
Shallow ditches

PORT ARTHUR LA  
(S E)  
N 2945-W9345/75  
OCT 18 1946

605  
(LA-TEX)