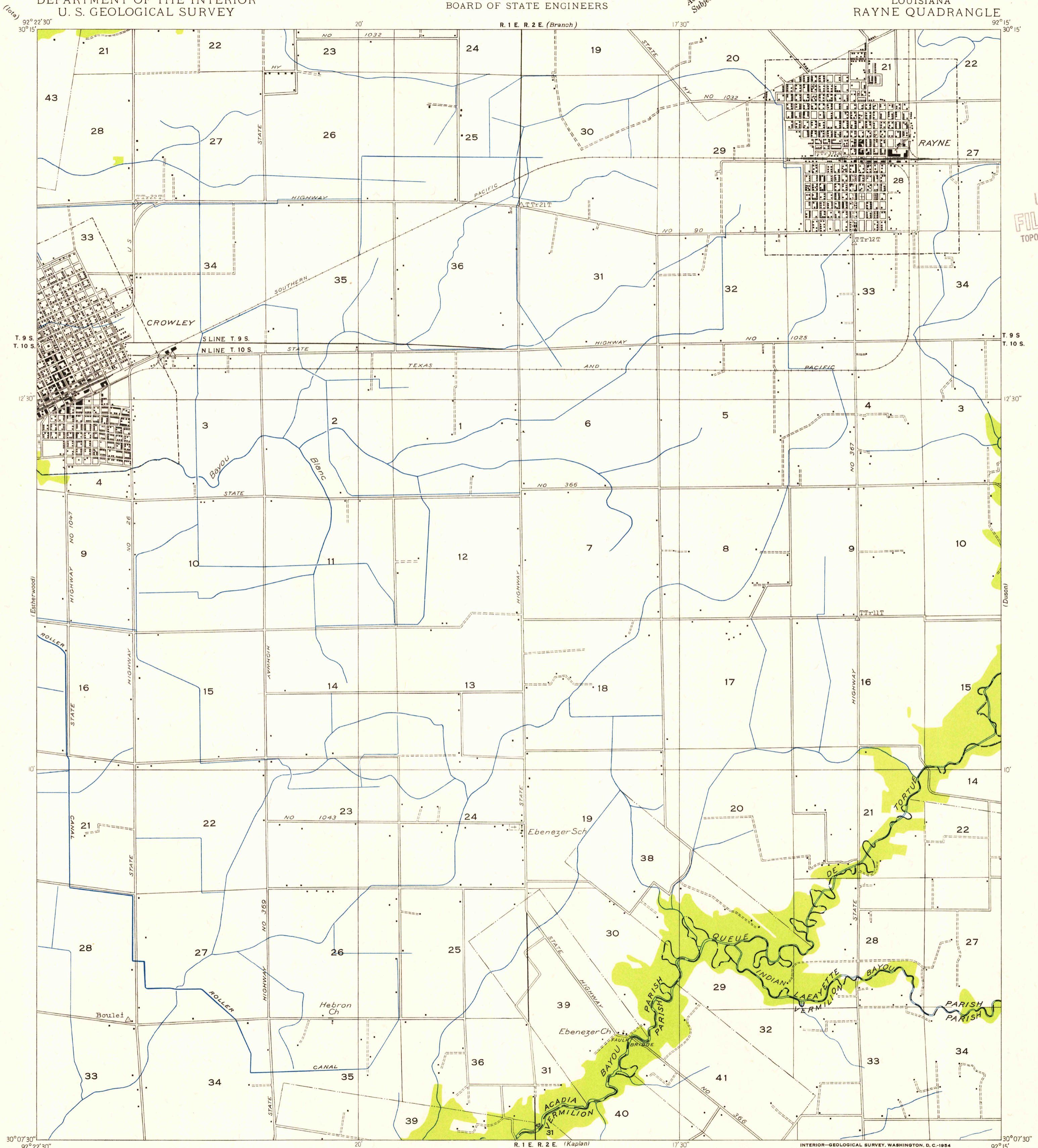


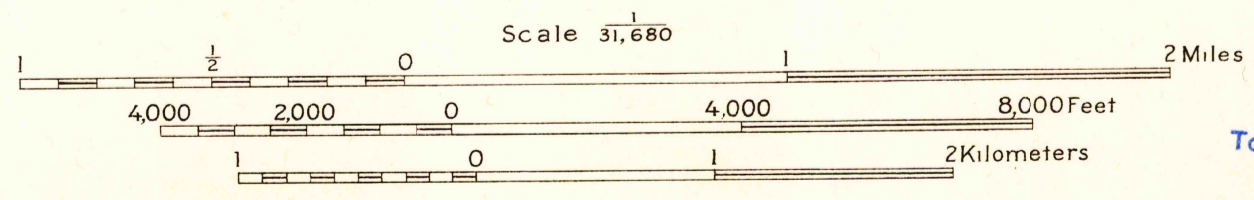
Advance sheet.  
Subject to correction



U.S.G.S.  
FILE COPY  
TOPOGRAPHIC DIVISION

Glenn S. Smith, Division Engineer  
Compiled by U. S. Geological Survey after field examination  
of aerial photographs taken by Air Corps, U. S. Army  
Control by U. S. Geological Survey and U. S. Coast and Geodetic Survey  
Field examination in 1933

7 1/2°  
TRUE NORTH  
MAGNETIC NORTH  
APPROXIMATE MEAN  
DECLINATION 1933



USGS  
Historical File  
Topographic Division

Township lines  
Township lines, adjustment indefinite  
Section lines  
Section lines, adjustment indefinite  
Grant lines  
Grant lines, adjustment indefinite  
Ditches  
Shallow ditches

U.S.G.S.  
FILE COPY  
RAYNE, LA. TOPOGRAPHIC DIVISION

N 3007.5-79215/7.5  
JAN 26 1955