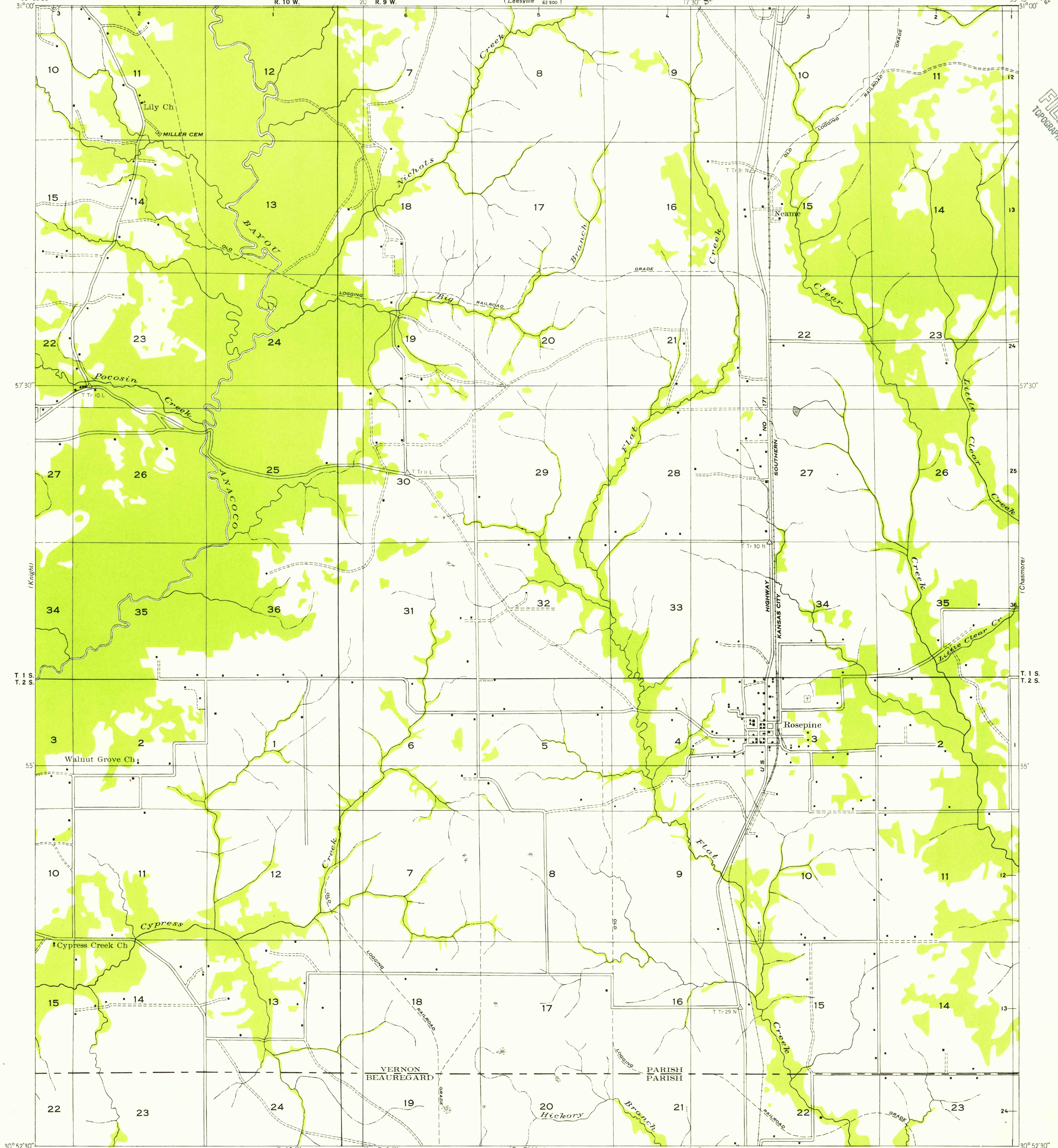


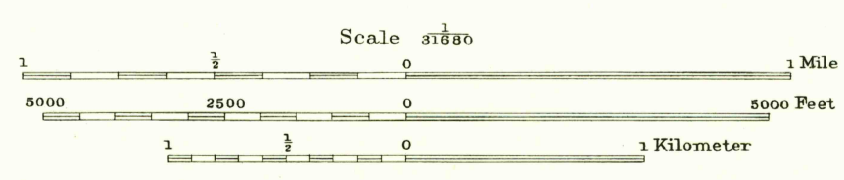
Advance sheet.
Subject to correction.



U.S.G.S.
FILE COPY
TOPOGRAPHIC DIVISION

Glenn S. Smith, Division Engineer
Compiled by Geological Survey from aerial photographs
Field examination in 1935

TRUE NORTH
7' 1"
MAGNETIC NORTH
APPROXIMATE MEAN
DECLINATION, 1938



USGS
Historical File
Topographic Division

U.S.G.S.
FILE COPY
TOPOGRAPHIC DIVISION

ROSEPINE, LA.
N3052.5-W9315/7.5

SEP 14 1954
1010