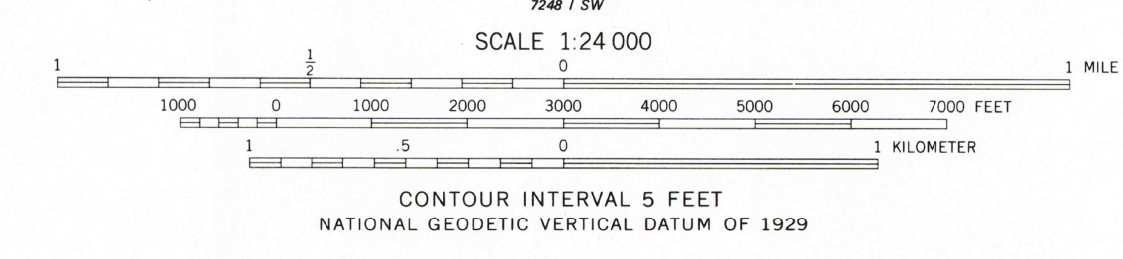


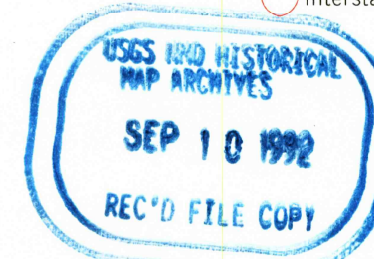
Mapped, edited, and published by the Geological Survey
Control by USGS and NOS/NOAA
Topography by photogrammetric methods from aerial photographs
taken 1974-75. Field checked 1976. Map edited 1980
Supersedes map dated 1959
Projection and 10,000-foot grid ticks: Louisiana coordinate
system, north zone (Lambert conformal conic)
1000-meter Universal Transverse Mercator grid, zone 15
1927 North American Datum
To place on the predicted North American Datum 1983
move the projection lines 12 meters south and
17 meters east as shown by dashed corner ticks
There may be private inholdings within the boundaries of
the National or State reservations shown on this map
Red tint indicates areas in which only landmark buildings are shown

Revision shown in purple compiled in cooperation with
State of Louisiana agencies from aerial photographs taken 1990
and other sources. Contours not revised. This information
not field checked. Map edited 1992
Purple tint indicates extension of urban area



ROAD CLASSIFICATION

Primary highway, hard surface	Light-duty road, hard or improved surface
Secondary highway, hard surface	Unimproved road
Interstate Route	U. S. Route
	State Route



SHREVEPORT EAST, LA.
NW4 CASPIANA 15' QUADRANGLE
32093-06-1F-024
1980
DMA 7248 1 NW-SERIES V885
REVISED 1992

THIS MAP COMPLIES WITH NATIONAL MAP ACCURACY STANDARDS
FOR SALE BY U.S. GEOLOGICAL SURVEY, DENVER, COLORADO 80225, OR RESTON, VIRGINIA 22092
AND LOUISIANA DEPARTMENT OF TRANSPORTATION AND DEVELOPMENT, BATON ROUGE, LOUISIANA 70804
A FOLDER DESCRIBING TOPOGRAPHIC MAPS AND SYMBOLS IS AVAILABLE ON REQUEST