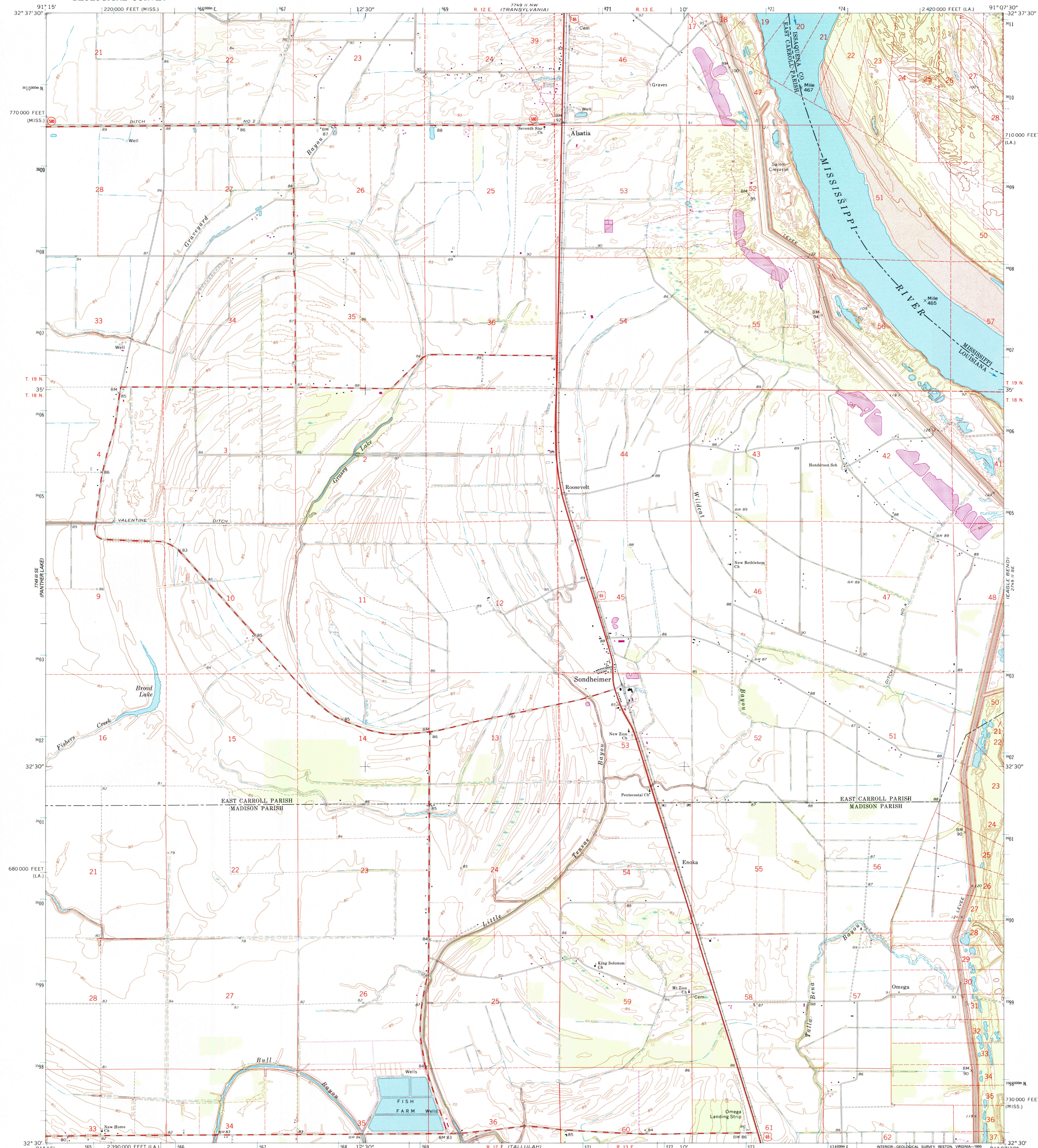


UNITED STATES  
DEPARTMENT OF THE INTERIOR  
GEOLOGICAL SURVEY

SONDHEIMER QUADRANGLE  
LOUISIANA - MISSISSIPPI  
7.5 MINUTE SERIES (TOPOGRAPHIC)



Produced by the United States Geological Survey

Compiled by photogrammetric methods from imagery dated 1967  
Field checked 1970

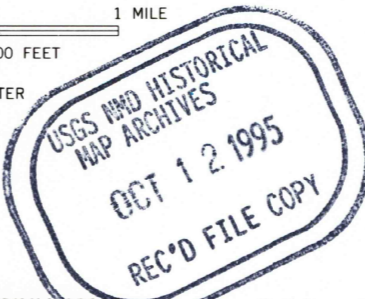
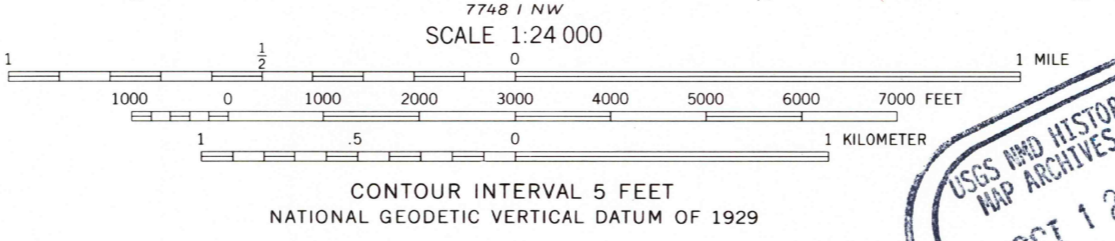
North American Datum of 1927 (NAD 27)  
Projection: Louisiana coordinate system, north zone  
(Lambert conformal conic)

10 000-foot ticks: Louisiana coordinate system, north zone and  
Mississippi coordinate system, west zone

Blue 1000-meter Universal Transverse Mercator ticks, zone 15

North American Datum of 1983 (NAD 83) is shown by dashed  
corner ticks. The values of the shift between NAD 27 and NAD 83  
for 7.5-minute intersections are obtainable from National Geodetic  
Survey NADCON software

UTM GRID AND 1995 MAGNETIC NORTH  
DECLINATION AT CENTER OF SHEET  
17 MILS  
36 MILS

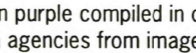


**ROAD CLASSIFICATION**

Primary highway, hard surface	Light-duty road, hard or improved surface
Secondary highway, hard surface	Unimproved road
Interstate Route	U. S. Route
	State Route

THIS MAP COMPLIES WITH NATIONAL MAP ACCURACY STANDARDS  
FOR SALE BY U.S. GEOLOGICAL SURVEY, DENVER, COLORADO 80225, OR RESTON, VIRGINIA 20192  
AND LOUISIANA DEPARTMENT OF TRANSPORTATION AND DEVELOPMENT, BATON ROUGE, LOUISIANA 70804  
A FOLDER DESCRIBING TOPOGRAPHIC MAPS AND SYMBOLS IS AVAILABLE ON REQUEST

QUADRANGLE LOCATION



SONDHEIMER, LA-MS  
32091-E2F-024

1994

DMA 7749 II SW-SERIES V885

Revisions shown in purple compiled in cooperation with  
State of Louisiana agencies from imagery dated 1994  
and other sources. Map edited 1995  
Information shown in purple may not meet USGS content  
standards and may conflict with previously mapped contours

