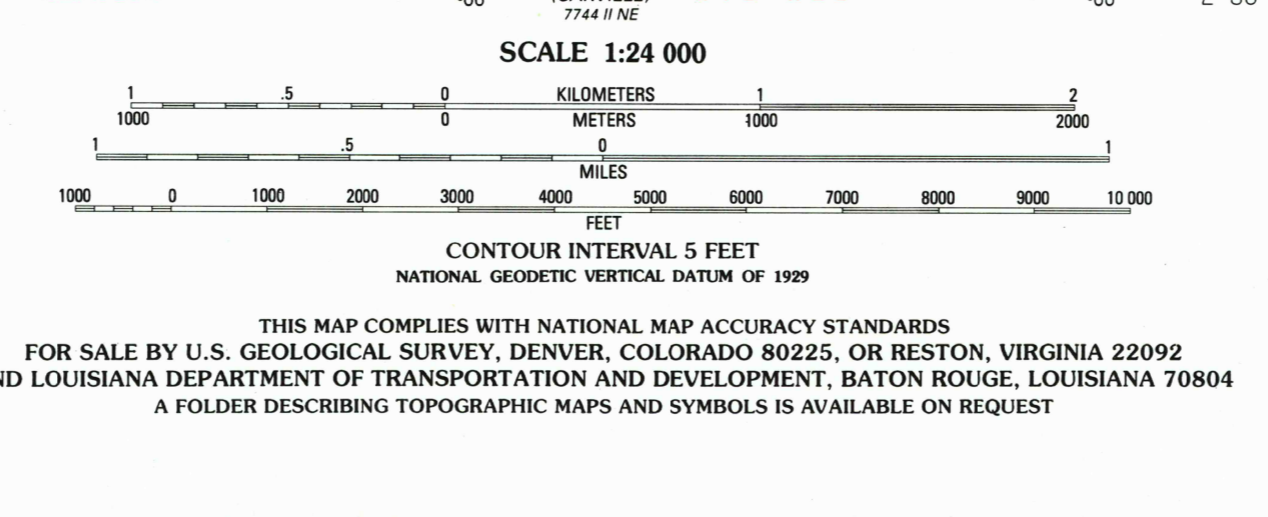
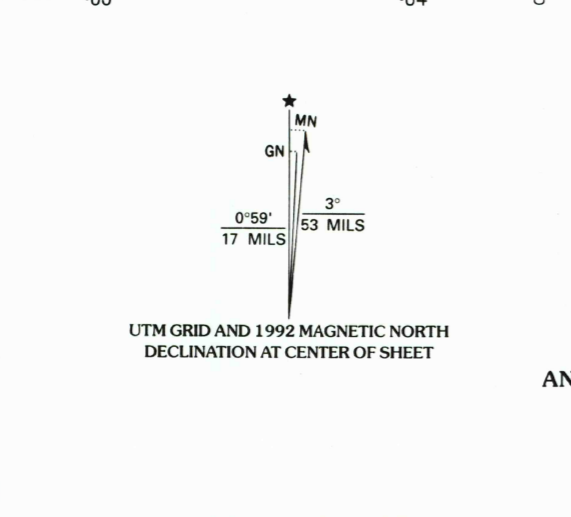


Produced by the United States Geological Survey
Control by USGS, NOS/NOAA and Louisiana Highway Department
Topography by photogrammetric methods from aerial photographs
taken 1952 and planetable surveys 1952-53. Revised from aerial
photographs taken 1989. Field checked 1991. Map edited 1992
Projection and 10,000-foot grid ticks: Louisiana coordinate
system, south zone (Lambert conformal conic)
1000-meter Universal Transverse Mercator grid, zone 15
1927 North American Datum
The difference between 1927 North American Datum and North
American Datum of 1983 (NAD 83) for 7.5-minute intersections
is given in USGS Bulletin 1875. The NAD 83 is shown by
dashed corner ticks
There may be private inholdings within the boundaries of the
National or State reservations shown on this map
Gray tint indicates areas in which only landmark buildings are shown
All or part of this quadrangle lies within a subsidence area
Fine red dashed lines indicate selected fence and field lines where
generally visible on aerial photographs. This information is unchecked



THIS MAP COMPLIES WITH NATIONAL MAP ACCURACY STANDARDS
FOR SALE BY U.S. GEOLOGICAL SURVEY, DENVER, COLORADO 80225, OR RESTON, VIRGINIA 22092
AND LOUISIANA DEPARTMENT OF TRANSPORTATION AND DEVELOPMENT, BATON ROUGE, LOUISIANA 70804
A FOLDER DESCRIBING TOPOGRAPHIC MAPS AND SYMBOLS IS AVAILABLE ON REQUEST

ROAD CLASSIFICATION

Primary highway, hard surface	Light-duty road, hard or improved surface
Secondary highway, hard surface	Unimproved road
U. S. Route	State Route

LOUISIANA QUADRANGLE LOCATION

ST. GABRIEL, LA.
SE/4 BATON ROUGE 15' QUADRANGLE
30091-C1-TF-024
1992
DMA 7744 | SE-SERIES V885

REC'D FILE COPY
JAN 31 1998

ISBN 0-607-22944-5
9 780607 229445